

Innovation Project Submission Process

A Tool Kit for Counties

Sharmil Shah Psy.D, Chief, Program Operations

Grace Reedy, Innovation Team Member

Marcus Galeste PhD, Innovation Team Member

Shannon Tarter, Innovation Team Member



MHSA INN Regulations require Innovative Projects to either:

- Introduce a new practice or approach to the overall mental health system, including, but not limited to, prevention and early intervention
- Make a change to an existing practice in the field of mental health, including but not limited to, application to a different population
- Apply a promising community driven practice or approach that has been successful in a non-mental health context or setting to the mental health system
- Support participation in a housing program designed to stabilize a person's living situation while also providing supportive services on-site



Primary Purpose of the Innovation Project

- Increase access to underserved groups
- Increase the quality of mental health services
- Promote interagency and community collaboration
- Increase access to mental health services, including, but not limited to, services provided through permanent supportive housing





INNOVATION TOOL KIT

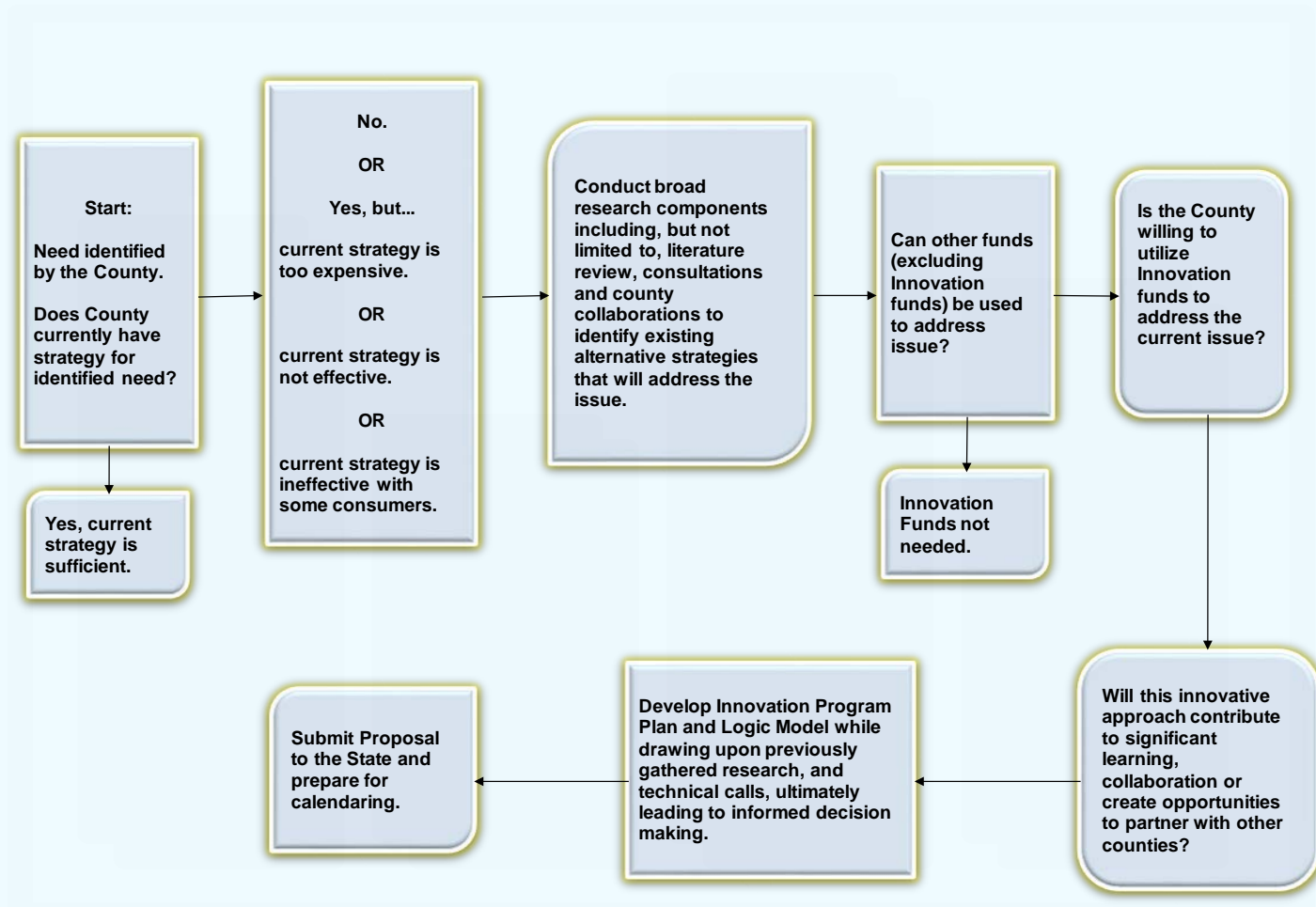


Innovation Toolkit

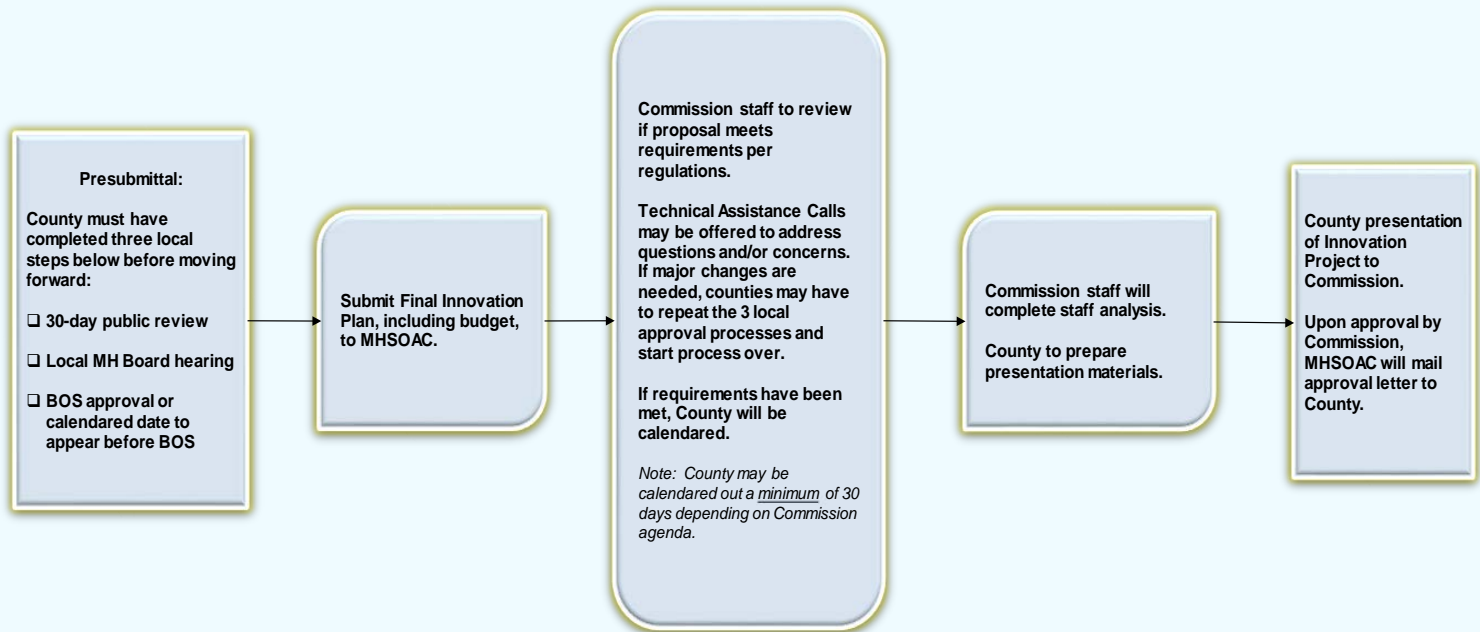
- Innovation Framework Decision Tree
 - Provides information and guidance on how to design an Innovation Project
- MHSOAC Innovation Review Process
 - Visual guide of MHSOAC workflow
- Innovation Project Plan Recommended Template
 - Document will assist counties to ensure minimum requirements are met
- Commission Meeting Recommendations
 - Guides counties on how to present their projects to the Commission



Innovation Framework Decision Tree



Innovation Review Process



Project Plan : Recommended Template

- Application Checklist
 - 30 day public comment period
 - Local Mental Health Board Hearing
 - BOS approval or prospective date to be calendared
 - Desired Presentation Date with Commission

- Section 1 – Regulations
 - General Requirement
 - Primary Purpose



Project Plan : Recommended Template (cont'd)

- Section 2 – Project Overview
 - What is the challenge / need?
 - What is the proposed project?
 - How many individuals will be served?
 - What does the County hope to learn?
 - ◆ Do the learning objectives have outcomes that can be measured?



Project Plan : Recommended Template (cont'd)

- Section 3 – Additional Regulatory Requirements
 - CPP; Stakeholder involvement; Cultural Competence
 - **Evaluation**
 - Sustainability

- Learning and Evaluation
 - May be conducted in-house or contracted
 - Ties the project together
 - ◆ Main learning objectives and goals
 - ◆ Primary purpose
 - Opportunity to showcase potential outcomes of the project
 - Must contain a plan on how data will be collected, potential measures, and how lessons learned will be shared.



Project Plan : Recommended Template (cont'd)

- Section 4 – Budget / Expenditure Sources
 - Budget narrative
 - Budget by Fiscal Year and budget category
 - Leveraging of funds
 - ◆ Federal Financial Participation
 - ◆ Other MHSA funding sources
 - ◆ Grants/Other private funding
 - Sustainability of proposed project



Innovations: Things to consider

- An innovative project may affect any aspect of mental health practices or evaluate a new or changed application to solving mental health challenges. Examples may include:
 - Administrative, governance, processes and procedures
 - Education and training for service providers
 - Advocacy
 - Services and interventions
 - Research
- There is no such thing as a FAILED project
 - There is learning in what doesn't work
 - Allows counties to take a risk by testing or trying new ideas



Examples of Approved Innovation Projects

Multi-County Collaboratives

- ◆ Statewide Early Psychosis Learning Collaborative
- ◆ Allcove: One Stop Shop for Integrated Youth Mental Health Support
- ◆ Schools and Mental Health
 - ▼ Contract executed to inspire multi-county collaboration but no proposals generated to date
 - ▼ Mental Health Student Services Act
 - \$50M allocated

Single-County

- Alameda- Supportive Housing Community Land Trust
- Ventura-Conocimiento
- Butte-CARE Project
- Los Angeles- TRIESTE



Connection to YIPPC?

- Opportunity to inspire a multi-county collaborative
- Opportunity to create culture change around involving youth in each step of the development, implementation and evaluation of new Innovation projects at the local level



Q & A

Dr. Sharmil Shah

sharmil.shah@mhsoc.ca.gov

Grace Reedy

grace.reedy@mhsoc.ca.gov

Dr. Marcus Galeste

Marcus.Galeste@mhsoc.ca.gov

Shannon Tarter

Shannon.tarter@mhsoc.ca.gov

