



Prevention Planning and Data

March 17, 2021



Mission

To shape policy and practice to promote the safety and well-being of California's children and families.



Vision

To create an integrated state-wide system that supports families and Tribes to provide safe, stable, nurturing relationships and environments for their children.

Guiding Principles

- ✓ Include family centered strategies and perspectives in activities
- ✓ Promote equity and access to the resources that enhance the social determinants of health
- ✓ Advance sustainable and prevention partnerships
- ✓ Practice and build accountability through Continuous Quality Improvement



- The OCAP and Strategies TA are committed to a partnership that strives to build awareness of the benefits of prevention planning
- Are joined in their commitment to providing resources, supports and targeted technical assistance to counties
 - ❖ As a team of consultants, we are available to provide the following support:



- ✓ Assistance with facilitation of PPT meetings
- ✓ Defining roles and responsibilities of PPT members
- ✓ Tools and resources which encourage collaboration and coordination
- ✓ Tools to develop community strengths assessments, charters, Memorandums of Understanding (MOU) and action plans
- ✓ Guidance on recently implemented initiatives which potentially align with prevention planning efforts

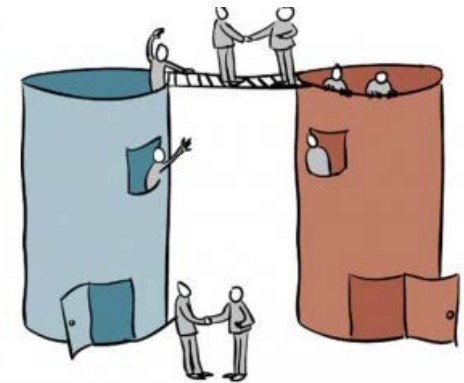
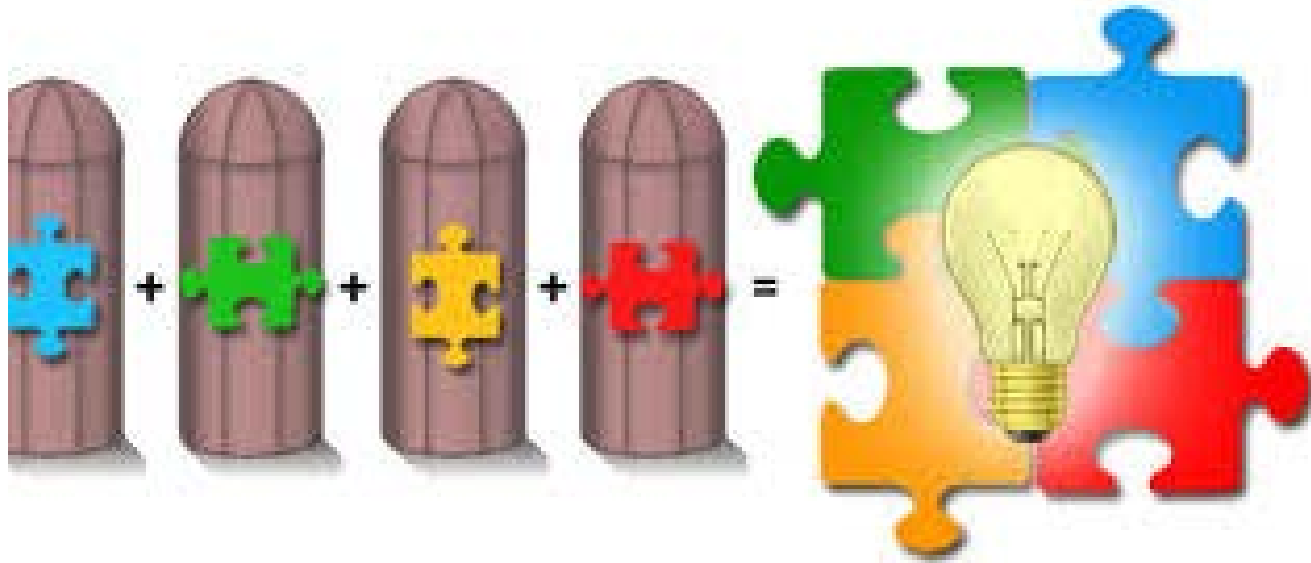


Image: drawinonutidea.com

The Pair of ACES

ADVERSE CHILDHOOD EXPERIENCES

Maternal Depression

Physical & Emotional Neglect

Emotional & Sexual Abuse

Divorce

Substance Abuse

Mental Illness

Domestic Violence

Incarceration

Homelessness

ADVERSE COMMUNITY ENVIRONMENTS

Poverty

Violence

Discrimination

Poor Housing Quality & Affordability

Community Disruption

Lack of Opportunity, Economic
Mobility and Social Capital



SOCIAL DETERMINANTS OF HEALTH

The social determinants of health are the conditions in which we are born, we grow and age, and in which we live and work. The factors below impact on our health and wellbeing.



Childhood experiences



Housing



Education



Social support



Family income



Employment



Our communities



Access to health services

Source: NHS Health Scotland

Stronger Families



Stronger Communities

- Necessary **economic supports** and resources for all families
- **Stable housing** for all families
- Equitable access to **healthcare, social services, safe parks and community activities**
- Equitable access to **quality care and education** at the start and throughout school-years
- Positive **social norms** to support parents and positive parenting



IMAGINE THE POSSIBILITIES

Cost for California's non-fatal and fatal cases of child abuse in 2019 to be **\$26.3 billion** over the course of a lifetime.



237,000+

Pay for 237K students to attend a 4-Year College



2,000,000+

Over 2M kids could attend pre-school for a year



13%

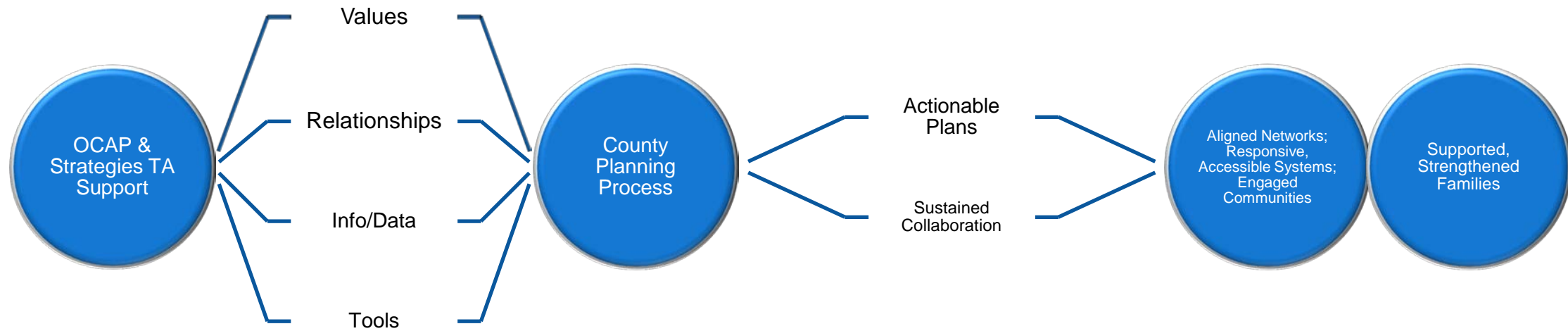
Fund the State's operating budget

PREVENTION PLANNING TEAMS



“Without collaboration our growth is limited to our own perspectives.”

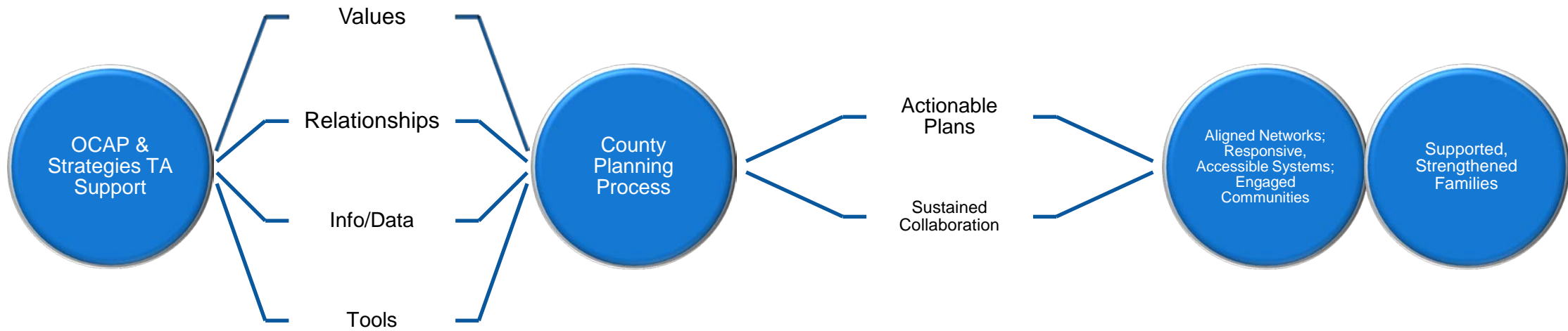
- John Robert Meehan (Author, Poet)



Theory of Change Statement:

IF the OCAP & Strategies TA provide **supports**, employing well-matched **values, relationships, information/data, & tools** to support **collaborative prevention planning** in California’s counties, **THEN** counties will develop and implement **actionable plans** and **sustained collaborations** that will create **aligned networks; responsive, accessible systems, and engaged communities**, which will **support and strengthen families**, **THEREBY** reducing child abuse and neglect.

PREVENTION PLANNING THEORY OF CHANGE



Values:

- Accountability
- Equity
- Collaboration
- Community Voice
- Strengths-Based

Relationships:

- Consultant Supports
- Peer Learning/Network Development

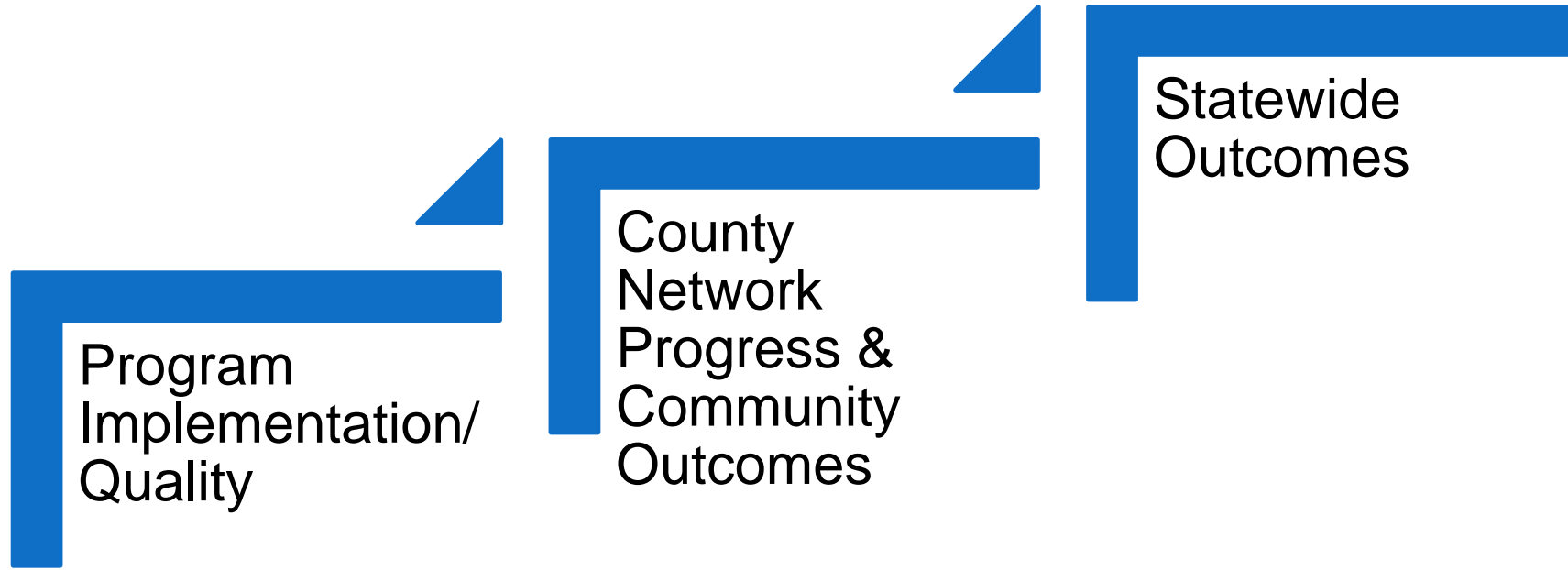
Info/Data:

- Dashboard/Data Sources
- Webinars
- Subject Matter Experts

Tools:

- Statewide/Regional Meetings
- Trailblazers Portal

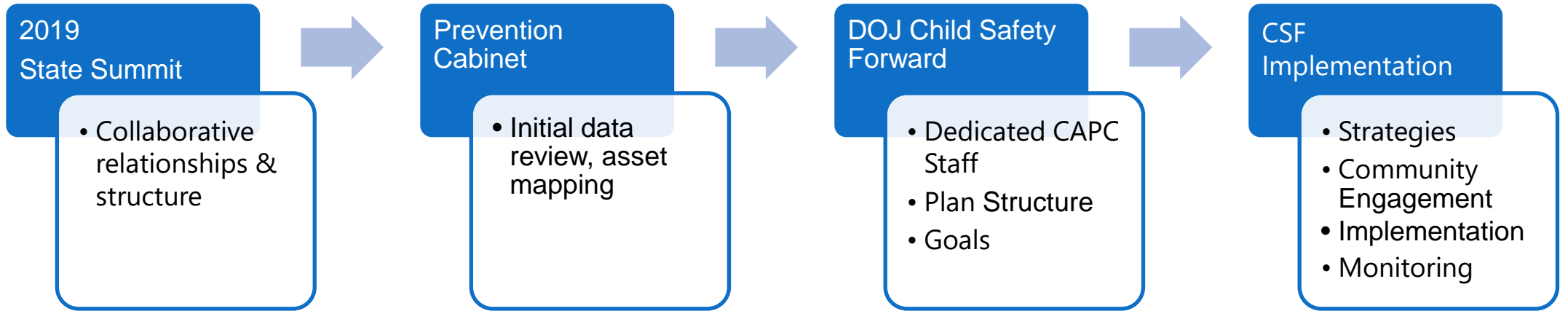
PREVENTION PLANNING EVALUATION



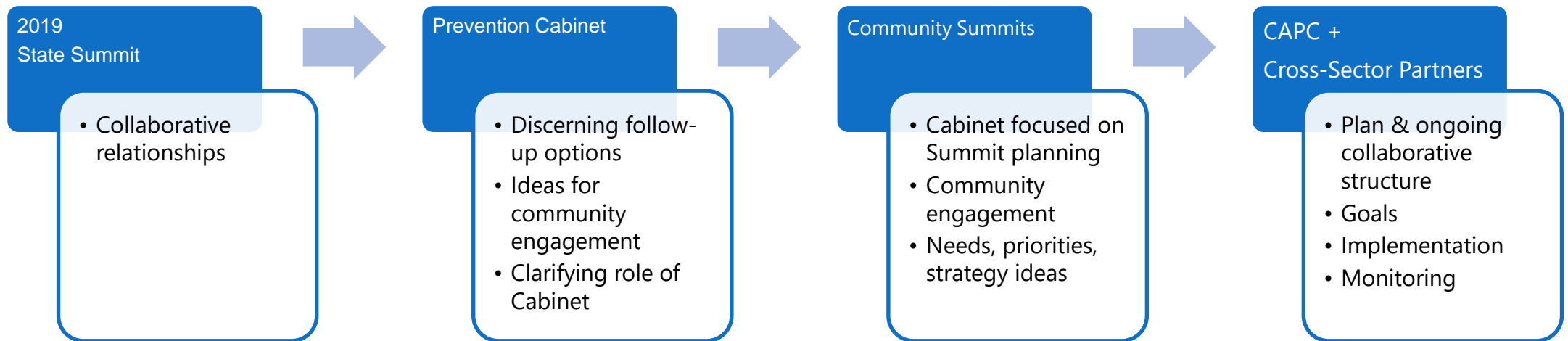
COUNTY PLANNING STAGES MARCH 2021

COUNTY PLANNING STAGE	DESCRIPTION	# OF COUNTIES
Convening	<ul style="list-style-type: none">• Confirm CAPC & CW co-leadership.• Assemble initial team.• Determine level(s) of prevention for focus.• Develop initial Action Plan.	2
Building Shared Understanding	<ul style="list-style-type: none">• Develop Mission/Purpose for collaborative.• Affirm MOU/Charter.• Determine meeting schedule.	6
Planning	<ul style="list-style-type: none">• Develop Theory of Change, goals, objectives, strategies..• Engage community.• Conduct asset maps/community needs assessments.• Plan for disproportionality, implementation, evaluation, sustainability.	11
Implementation	<ul style="list-style-type: none">• Begin executing on the Plan.	0
Monitoring/ Evaluation	<ul style="list-style-type: none">• Develop asset maps/community needs assessments.• Identify goals, objectives, strategies.• Track implementation & outcomes.• Celebrate successes, make needed adjustments.	0

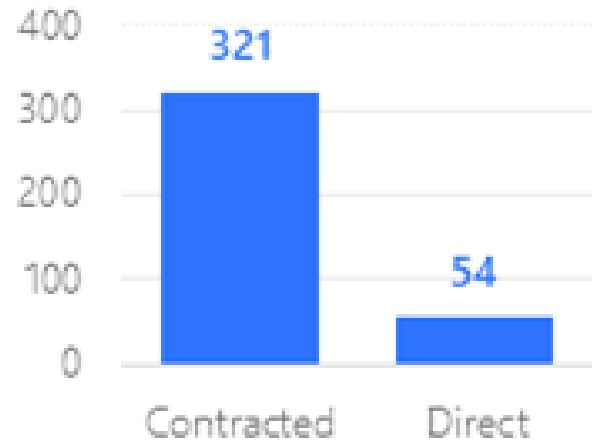
Sacramento



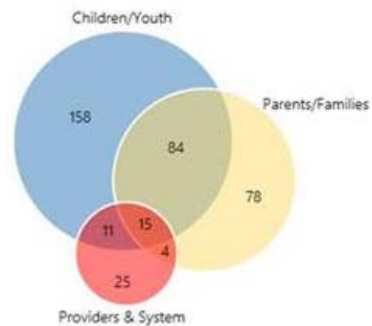
Santa Clara



Number of Programs Delivered



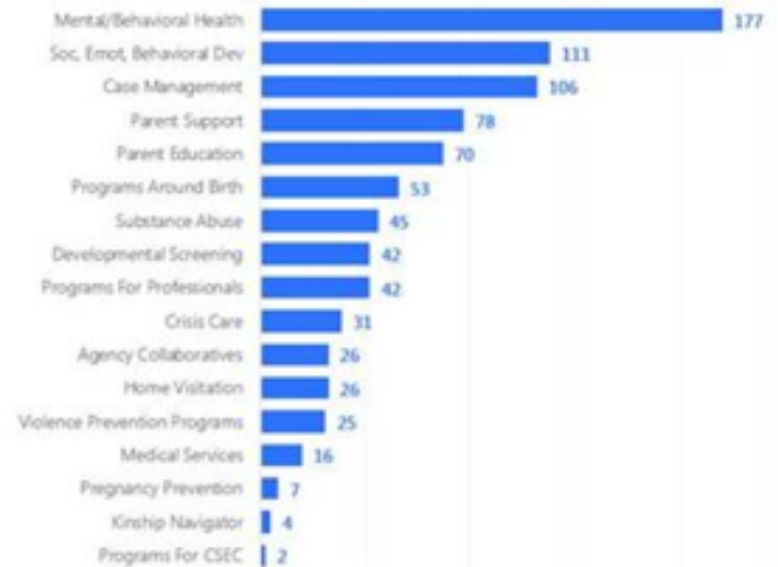
Programs by Target Population



ASSET MAPPING

Some of the findings include:

- Prevention services are highly reliant on community-based organizations (CBOs). Over 85% of identified programs were through contracts with CBOs.
- Secondary prevention services were most easily and frequently identified.
- Far more services were provided to children than to parents and other caregivers.
- Mental health was the most common service category.



Analyzing the Data and Using the Results to Support Program Development and Implementation



DATA IN ONE PLACE



DATA ACROSS THE SOCIAL DETERMINANTS OF HEALTH



ESTABLISH A BASELINE



START THE CONVERSATION



ASSIST IN ASSESSMENT OF THE COMMUNITY

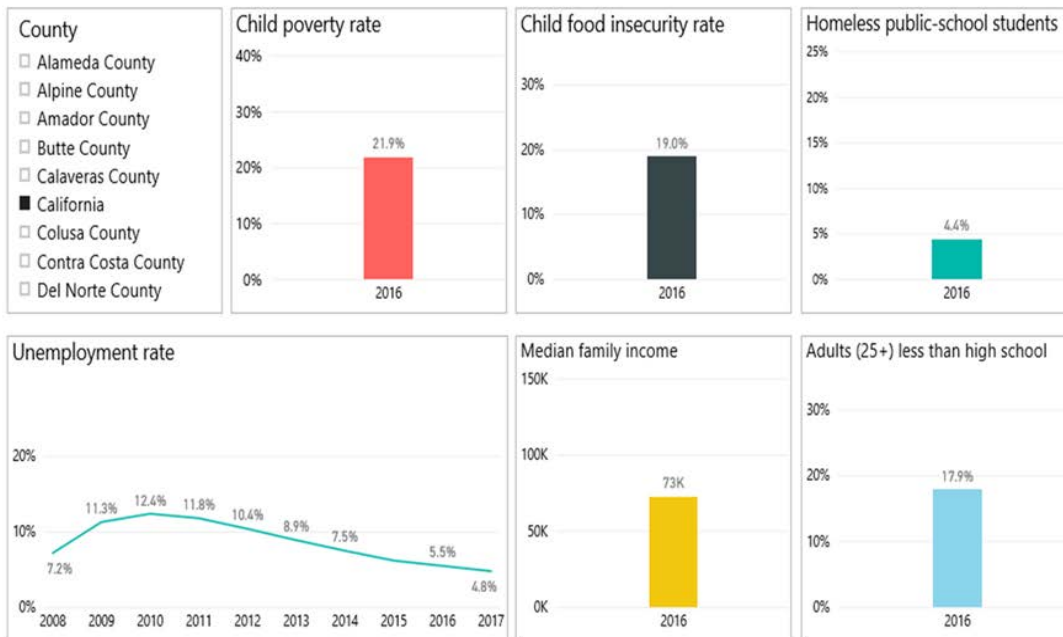


CROSS-SECTOR DATA

County Prevention Data Dashboard



Socioeconomic Status



Microsoft Power BI

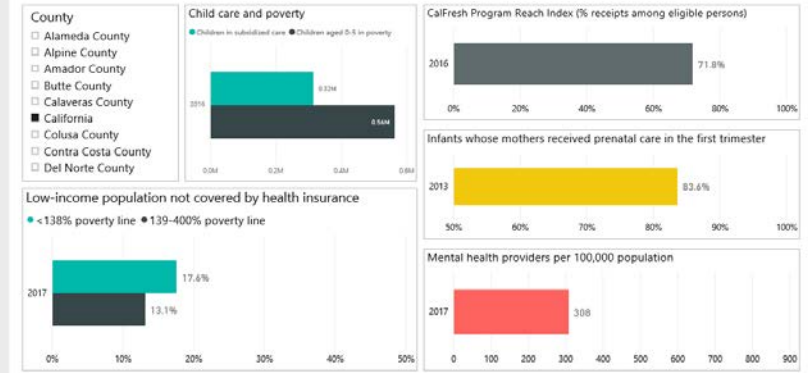
< 3 of 10 >

Note: (1) For some indicators in smaller counties, data are either suppressed to protect confidentiality or not available due to a small sample size. (2) For more information, refer to our [Data Sources](#) file.

County Prevention Data Dashboard



Service Access



Microsoft Power BI

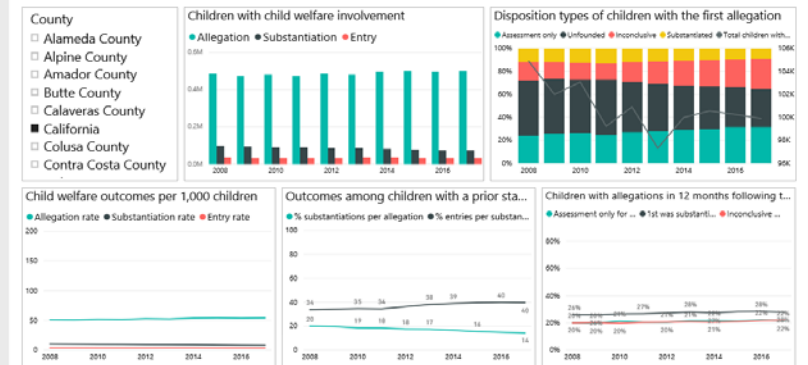
< 7 of 10 >

Note: (1) For some indicators in smaller counties, data are either suppressed to protect confidentiality or not available due to a small sample size. (2) For more information, refer to our [Data Sources](#) file.

County Prevention Data Dashboard



Child Welfare



Microsoft Power BI

< 8 of 10 >

Note: (1) For some indicators in smaller counties, data are either suppressed to protect confidentiality or not available due to a small sample size. (2)

LESSONS LEARNED

- **Strengths-based community indicators**
- **Mapping of community indicators**
- **Data by zip code**
- **Ways to compare to other communities, counties, or California**
- **Data parties**
- **Take away the stigma of data**
- **User friendly way to pull data**
- **Include the other departments in the discussion**





Thank You!

“

“I go into this work with the belief that nothing is impossible, and that’s what keeps me going every day.”

—Dr. Nadine Burke Harris