



WELLNESS • RECOVERY • RESILIENCE



Mental Health Services
Oversight & Accountability Commission

Commission Teleconference Meeting August 27, 2020 PowerPoint Presentations and Handouts

- Tab 2:** • PowerPoint: Award Early Psychosis Intervention Grants
- Tab 3:** • PowerPoint: MHSA Innovation Proposal: Social Enterprise Café
for Filipino/a/x Youth
- Tab 5:** • PowerPoint: Suicide Prevention

Award Early Psychosis Intervention Grants



Tom Orrock, Chief of Stakeholder
Engagement and Grants

Agenda Item 2
August 27, 2020

The Challenge

- Duration of Untreated Psychosis
 - 18.5 months between symptom onset and treatment
- Numbers
 - 8,600 California youth and young adults develop psychosis each year
- Fragmented care
 - Limited access to gold standard care
 - Various insurance billing
 - Disconnect between education and MH care



The Opportunity

- On October 2, 2017, the Governor signed Assembly Bill 1315 (Mullin, Chapter 414, 2017), establishing the Early Psychosis Intervention Plus (EPI Plus) Program
- Commission given responsibility to implement the program
- \$19,452,000



Commission Actions

- Established the EPI Plus Advisory Committee
- Held public meetings and a conference
- RFA outline approved-Feb. 2020
- Released the RFA-April 2020
- Recommending Grants-August 2020



The Approach

- Expand integrated recovery-based approach:
- Coordinated Specialty Care model
 - Primary Care/Medication
 - Case Management
 - Cognitive Behavioral Therapies
 - Family Education and Support
 - Supported Employment and Education
 - Peer Support



Grant Apportionment

- Programs to receive \$2 million each for a four-year term.
- Allowable costs include:
 - Personnel and/or peer support.
 - Program costs including services, technology, data collection, and facilities improvements as they relate to expanding services to reach full fidelity to the CSC model.
 - Administration.
 - All costs must be directly related to expanding the current early psychosis intervention program as outlined in the application.



RFA Evaluation

- Each RFA contained scoring tool and rubric for scoring
- Stage 1: Administrative Submission Review
 - Contribution of local funds
 - Experience operating an EPI program
 - County or city behavioral health department
- Stage 2: Application Scoring Mandatory requirements
 - Scored requirements
 - Budget Worksheet
- The applications with the highest overall scores are recommended for an award



Proposed Motion

For each of the grants, staff recommends the Commission:

- Authorize the Executive Director to issue a “Notice of Intent to Award EPI Plus Grants to the five successful applicants.
- Authorize the Executive Director to execute the contracts for the five successful applicants.





SAN MATEO COUNTY HEALTH
**BEHAVIORAL HEALTH
& RECOVERY SERVICES**

MHSA Innovation Proposal: **Social Enterprise Cafe for Filipino/a/x Youth**

MHSOAC Meeting – August 27, 2020



Overview

1. INN General Requirements
2. Primary Problem
3. Proposed Innovation & Learning Goals
4. Budget Request



General Requirements

General Criteria:

- Introduces **a new practice or approach** to the overall mental health system by...
implementing a culturally responsive social enterprise focused on community behavioral health needs of Filipino/a/x youth.

Primary Purpose:

- **Increases access** to mental health services to underserved groups by...
providing culturally specific and holistic approach to engaging Filipino/a/x youth.
The Social Enterprise Café will include a robust referral network that connects youth to systems of care, including behavioral health counseling.



Primary Problem

High rates of depression and suicidal ideation attributed to cultural identity formation amongst Filipino/a/x youth

- **Behavioral Health and Social Determinants of Health (SDOH)** - Disparities exist for Filipino/a/x youth
- **Cultural Identity** - Cultural identification is critical for the mental health of Filipino/a/x youth as they explore the opposing values of two cultures
- **Promising Practices** - There is a need for innovative sustainable practices that address the mental health needs of Filipino/a/x youth

Proposed Innovation

- Cultural arts and wellness-focused **Social Enterprise Café** that offers Filipino/a/x youth mental health programming on site.

Learning Goal #1

Does an integrated approach to a social enterprise that includes on-site programming improve mental health and outcomes for the Filipino/a/x youth engaged?

Learning Goal #2

Does a culturally affirming space increase access to behavioral health and services for Filipino/a/x youth?

Learning Goal #3

Can a holistic social enterprise model improve quality of life indicators for Filipino/a/x youth?



SAN MATEO COUNTY HEALTH

**BEHAVIORAL HEALTH
& RECOVERY SERVICES**



CommuniTREE

Branches:

- Career Path/Purpose
- Wellness Ambassadors
- Rite of Passage Work
- Leadership Development
- Youth Production Line & Management

Leaves:

Critical Thinking

Creativity/Imagination

Collaboration/Teamwork

Problem Solving

Fruits:

- Physical/Mental Health/Wellness
- Decrease Stigma
- Cultural Pride & Preservation
- Sense of Belonging
- Community Engagement/Building
- Bridging the generational gaps amongst youth, adults, and elders

Fruits:

- Leadership Development Skills → Social Change Agents
- Education/Academic Support
- Employment/Entrepreneurship & Financial Literacy Skills
- Other Hard/Soft Skills

Target Population:
Filipino/a/x At-Risk Youth
16-24

Soil:

Rooted in Foundation of Filipino/a/x Cultural Values

- Kapwa
- Ginahwa

Community: Family, Friends, Ancestors

Indigenous Teachings/Practices/Communities

Roots:

Mental Health & Medical Providers

Financial Advisors

Teachers/Instructors/Mentorship

Peer Support

Budget Request

- Requesting \$2,625,000 for 5 years allocated out as follows
 - Year 1 is focused on start-up activities
 - Year 4 and 5 expect decrease in funding due to financial sustainability of the social enterprise model

Service Contract: \$2,400,000

- \$300,000 for FY 20/21
- \$700,000 for FY 21/22
- \$700,000 for FY 22/23
- \$400,000 for FY 23/24
- \$300,000 for FY 24/25

Evaluation: \$225,000

- \$55,000 for FY 20/21
- \$40,000 for FY 21/22
- \$40,000 for FY 22/23
- \$40,000 for FY 23/24
- \$50,000 For FY 24/25



Thank you!



SAN MATEO COUNTY HEALTH
**BEHAVIORAL HEALTH
& RECOVERY SERVICES**



smchealth.org/mhsa



mhsa@smcgov.org



cafe.
retail.
library.
work space.



Proposed Motion: The Commission approves San Mateo County's Innovation plan, as follows:

Name: Cultural Arts and Wellness Social Enterprise Café for Filipino/a/x Youth

Amount: Up to \$2,625,000 in MHSA Innovation funds

Project Length: Five (5) Years

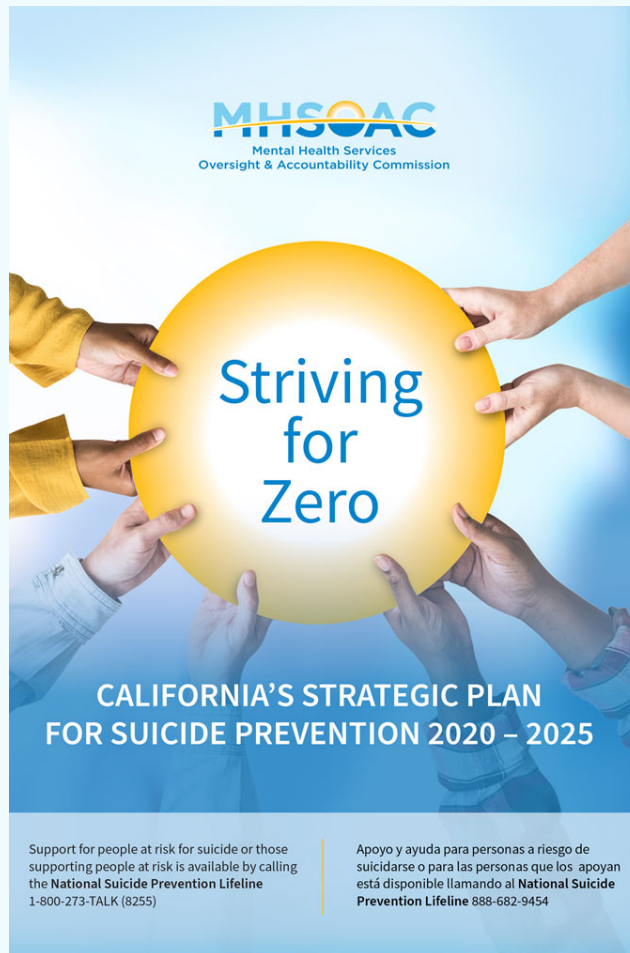


Agenda Item #5: Suicide Prevention



MHSOAC Meeting on August 27, 2020
Ashley Mills, M.S.
Research Supervisor

Background



- Plan adopted in November 2019
- Comprehensive Suicide Prevention
 - Leadership
 - Data
 - Training and technical assistance
 - Policy

Strategic Aim 1: Establish suicide prevention infrastructure

- Goal 1: Enhance visible leadership and networked partnerships
- Goal 2: Increase development and coordination of suicide prevention resources
- Goal 3: Advance data monitoring and evaluation

Strategic Aim 2: Minimize risk for suicidal behavior by promoting safe environments, resiliency, and connectedness

- Goal 4: Create safe environments by reducing access to lethal means
- Goal 5: Empower people, families and communities to reach out for help when mental health and substance use disorder needs emerge
- Goal 6: Increase connectedness between people, family members, and community
- Goal 7: Increase the use of best practices for reporting of suicide and promote healthy use of social media and technology

Strategic Aim 3: Increase early identification of suicide risk and connection to services based on risk

- Goal 8: Increase detection and screening to connect people to services
- Goal 9: Deliver a continuum of crisis services within and across counties

Strategic Aim 4: Improve suicide-related services and supports

- Goal 10: Deliver best practices in care targeting suicide risk
- Goal 11: Ensure continuity of care and follow-up after suicide-related services
- Goal 12: Expand support services following a suicide loss



Proposed Action Items

- Strategic Aim 1 | Establish a Suicide Prevention Infrastructure
 - Co-Sponsor Assembly Bill 2112 (Ramos) to authorize the establishment of an **Office of Suicide Prevention** within the Department of Public Health.
 - Assemble a **statewide suicide prevention coalition** of private and public partners.



Proposed Action Items

- Strategic Aim 1 | Establish a Suicide Prevention Infrastructure
 - Form **local learning collaboratives** to advance suicide prevention strategic planning and implementation, asset mapping, coalition building, and data collection and analysis.
 - Create and implement a **research agenda**, including analytics to link mental health consumer data with suicide outcomes and intentional injury data with suicide outcome data, and explore opportunities to analyze data collected on suicide attempt interventions by first responders and crisis service providers.



Proposed Action Items

- Strategic Aim 2 | Minimize Risk for Suicidal Behavior by Promoting Safe Environments, Resiliency, and Connectedness
 - **Deliver technical assistance** to local departments and coalitions to disseminate suicide prevention information, including recent changes in the legal transfer of firearms to prevent imminent death by suicide, to and increase awareness among local gun shops, shooting clubs, and firearm owner associations.



Proposed Action Items

- Strategic Aim 3 | Increase Early Identification of Suicide Risk and Connection to Services based on Risk
 - Create a **standardized training** on suicide risk assessment and management.
 - Create a standardized training on **suicide risk screening** and service triage based on risk for schools.
 - **Develop guidance** for health, mental health, and substance use disorder providers to use electronic health records to include suicide risk assessments and make referrals for services more routine.



Proposed Action Items

- Strategic Aim 4 | Improve Suicide-related Services and Supports
 - Create a sustainability and scalability strategy to expand **lethal means restriction counseling and safety planning** before discharge from health care or crisis services settings.
 - Create a sustainability and scalability strategy to **expand follow-up after an attempt** by regional crisis service providers.



Next Step

If the proposed motion is adopted today, staff will bring back to the Commission for approval outlines for contracts to implement action items



Proposed Motion

The Commission **approves the proposed action items** to begin the implementation of Striving for Zero: California's Strategic Plan for Suicide Prevention, 2020-2025; and directs **staff to bring back** to the Commission for **approval outlines for contracts** in an amount not to exceed \$2 million to implement these action items.

