

A large, diverse group of people of various ages and ethnicities are smiling and posing together. The group includes men, women, and children of different backgrounds, all appearing happy and engaged. The background is a plain, light color.

Mapping Disparities in Race and Ethnicity: Preliminary Dashboard

Dawnte Early Ph.D., MS, Chief of Research and Evaluation

Mike Howell, MA, UC Research and Data Integration Manager

Demographic Comparisons by Category and Data Source



Comparing the percentage of total persons across data sources by demographic characteristic can provide a broad measure of potential disparities in access to program services.



Demographic groupings were chosen based on summary data reported in the MHS Dashboard Demographic Datasets and Report Tool downloaded from the Department of Health Care Services (DHCS) Open Data Portal.



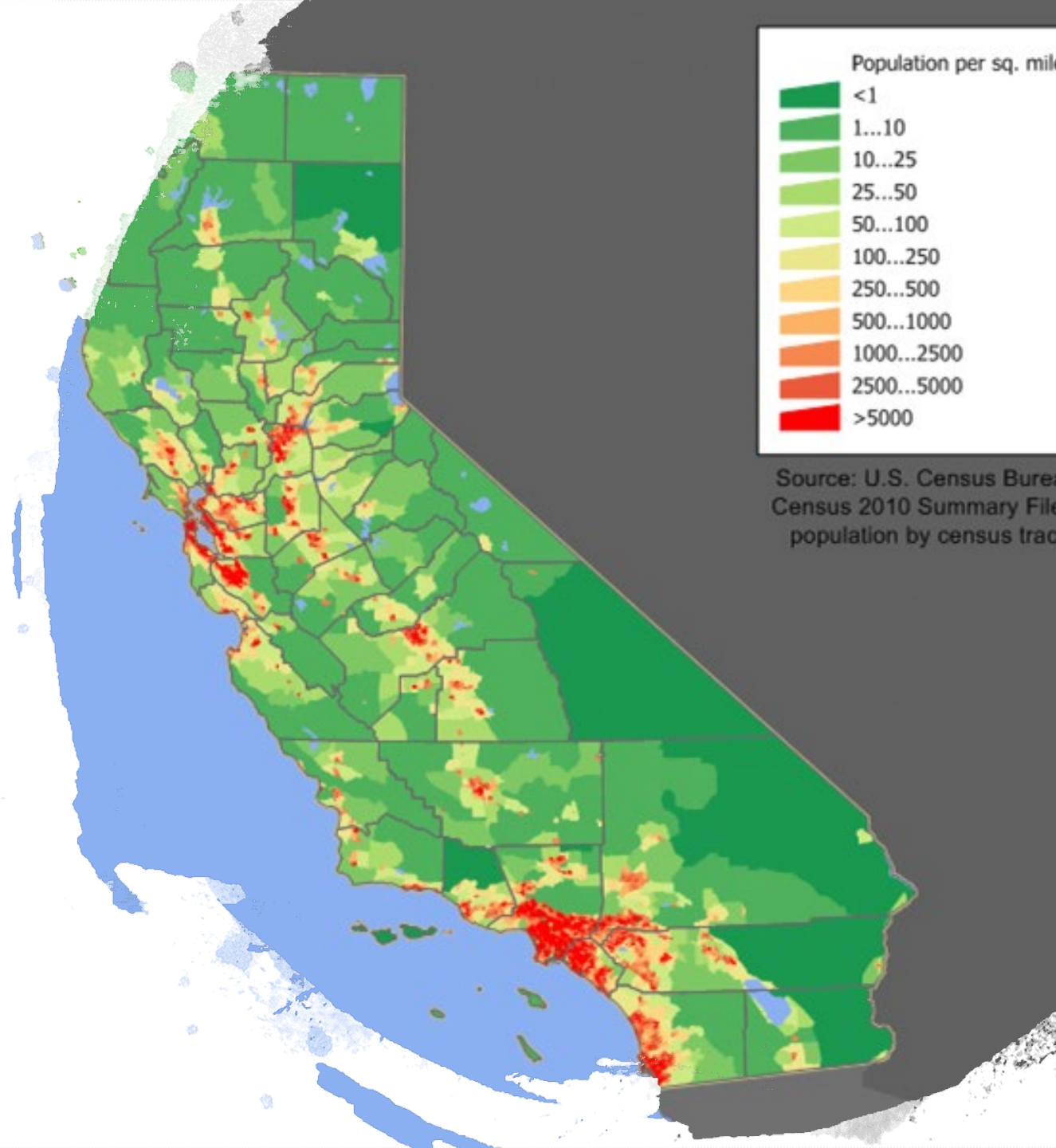
California Population estimates are based on Department of Finance (DOF) projections based on 2010 US Census data.

Comparison Group Definitions: Mental Health Services

- **Full Services Partnership (FSP)** - Persons in an active partnership for one or more days during the fiscal year. Based on data from the Data Collection Reporting (DCR) system which tracks active FSPs by County.
- **Client Services Information (CSI)** - Persons with one or more mental health services reported during the Fiscal Year. Based on data from the CSI reporting system. The CSI system reflects Medi-Cal clients, non-Medi-Cal clients, and services provided in County and/or City Mental Health Plans.

Comparison Group Definitions: Medi-Cal and County Population Totals

- **Medi-Cal** - Department of Health Care Services (DHCS) generated count of total active Medi-Cal clients in aid codes eligible for Short-Doyle/Medi-Cal II claims during fiscal years 2014-15 through 2017-18 . Data is downloaded from the MHS Dashboard Demographic Datasets and Report Tool.
- **CA Pop** - Data from the Department of Finance (DOF) total California population projections based on 2010 UC Census data, includes county level totals.



We
welcome
your
feedback

- If additional ideas come to mind, please reach out:
evaluations@mhsoac.ca.gov