



Mental Health Services Oversight & Accountability Commission Exploring the Criminal Justice/Mental Health Intersection

Mike Thompson, Director, CSG Justice Center (New York)

Hallie Fader-Towe, Senior Policy Advisor, CSG Justice Center (San Diego)

September 21, 2016 | Los Angeles, CA

JUSTICE ★ **CENTER**
THE COUNCIL OF STATE GOVERNMENTS
Collaborative Approaches to Public Safety

The Council of State Governments Justice Center

Corrections



Courts



Justice Reinvestment



Law Enforcement



Mental Health



Reentry



Substance Abuse



Youth

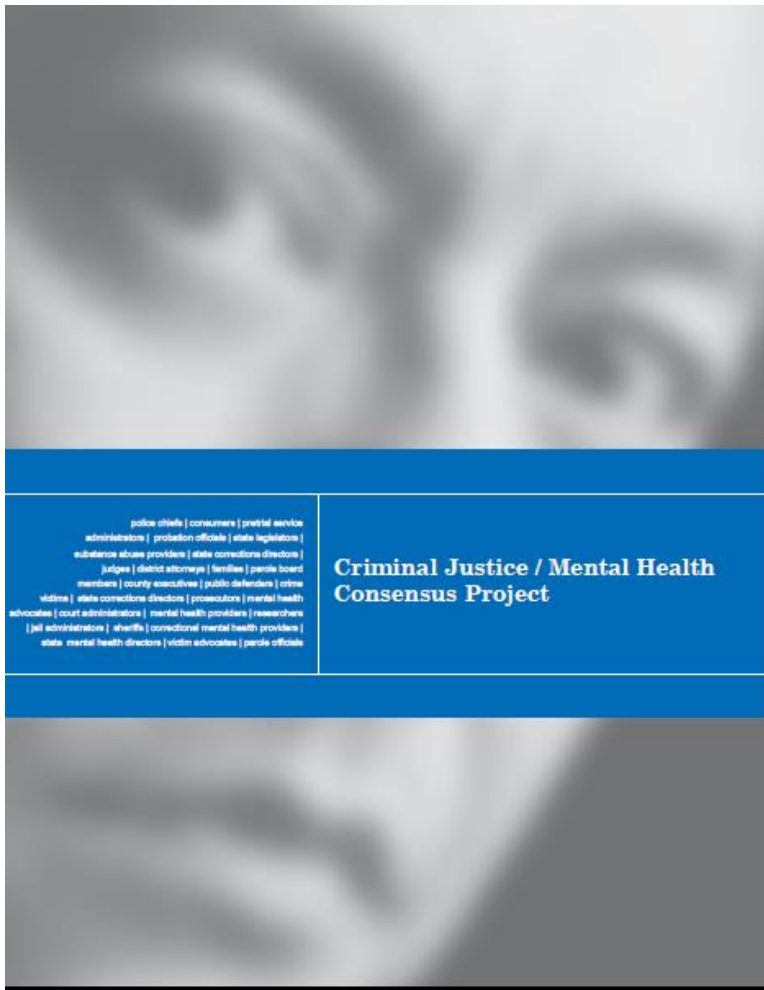


National nonprofit, nonpartisan membership association of state government officials

Represents all three branches of state government

Provides **practical advice** informed by the best available evidence

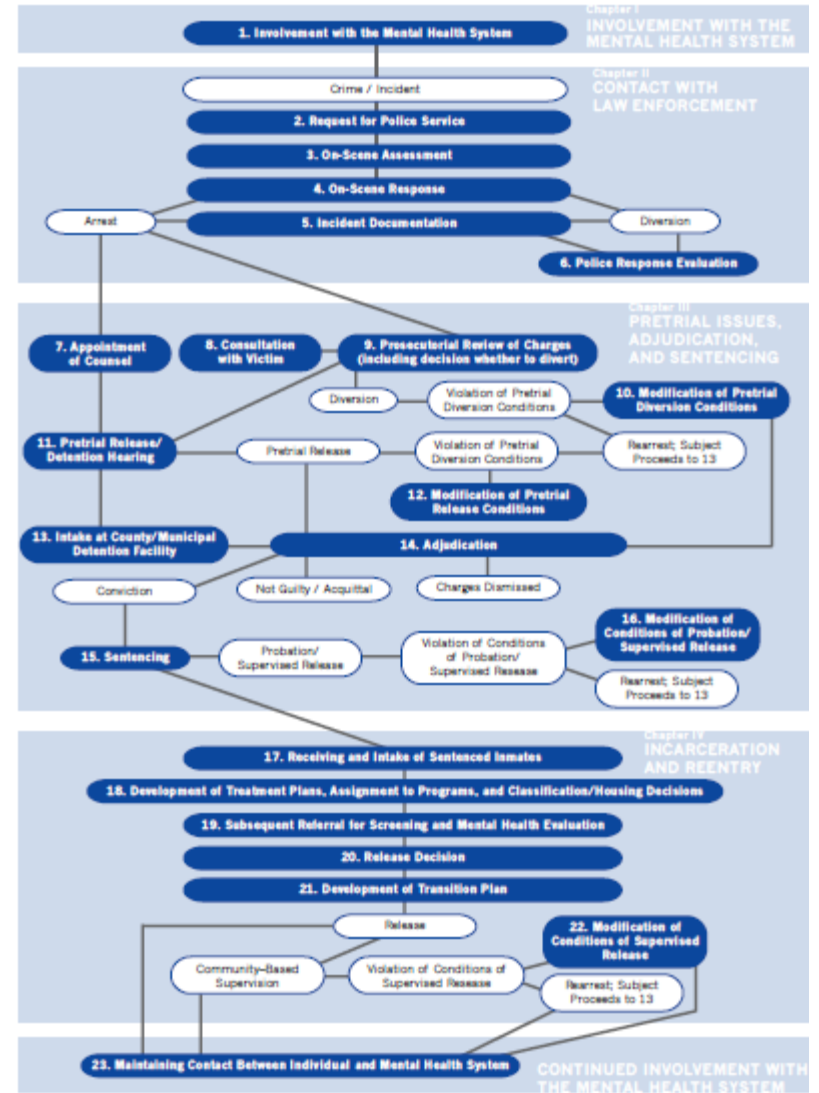
The Consensus Project Report (2002)



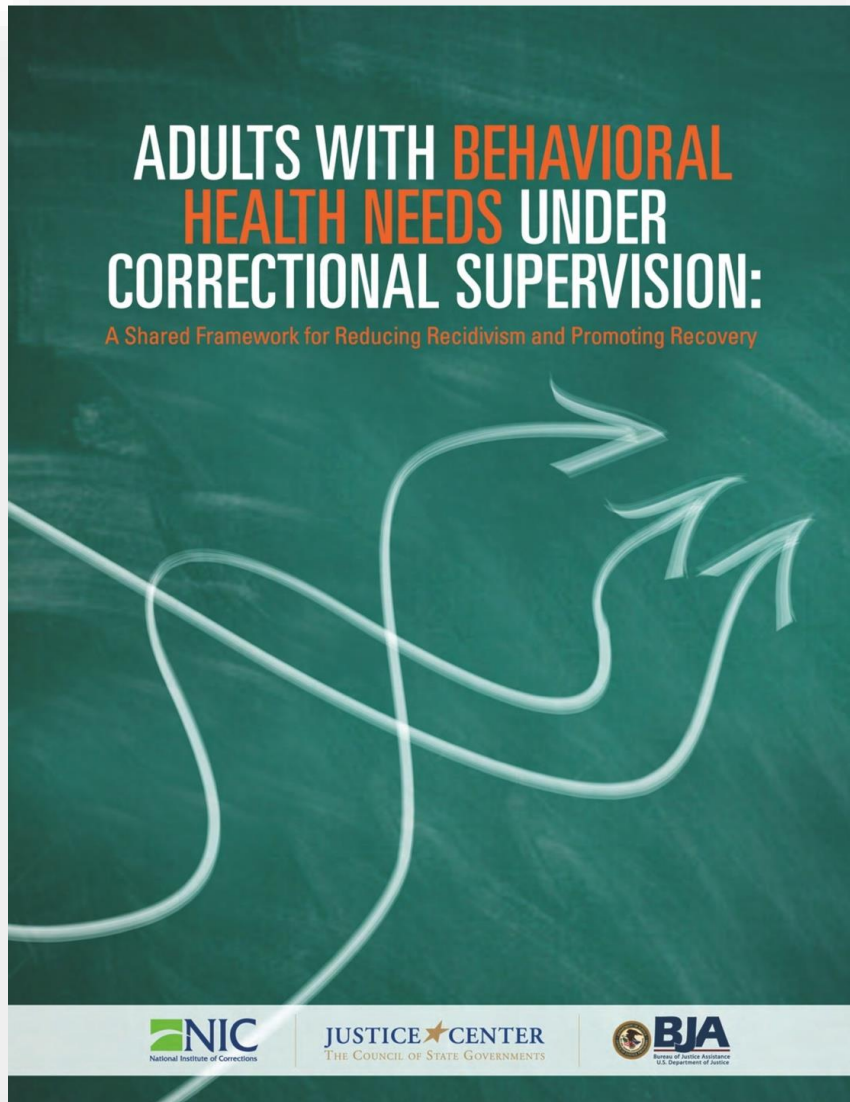
Criminal Justice / Mental Health Consensus Project

police chiefs | consumers | pretrial service administrators | probation officials | state legislators | substance abuse providers | state corrections directors | judges | district attorneys | families | parole board members | county executives | public defenders | crime victims | state corrections directors | prosecutors | mental health advocates | court administrators | mental health providers | researchers | jail administrators | sheriffs | conditional mental health providers | state mental health directors | victim advocates | parole officials

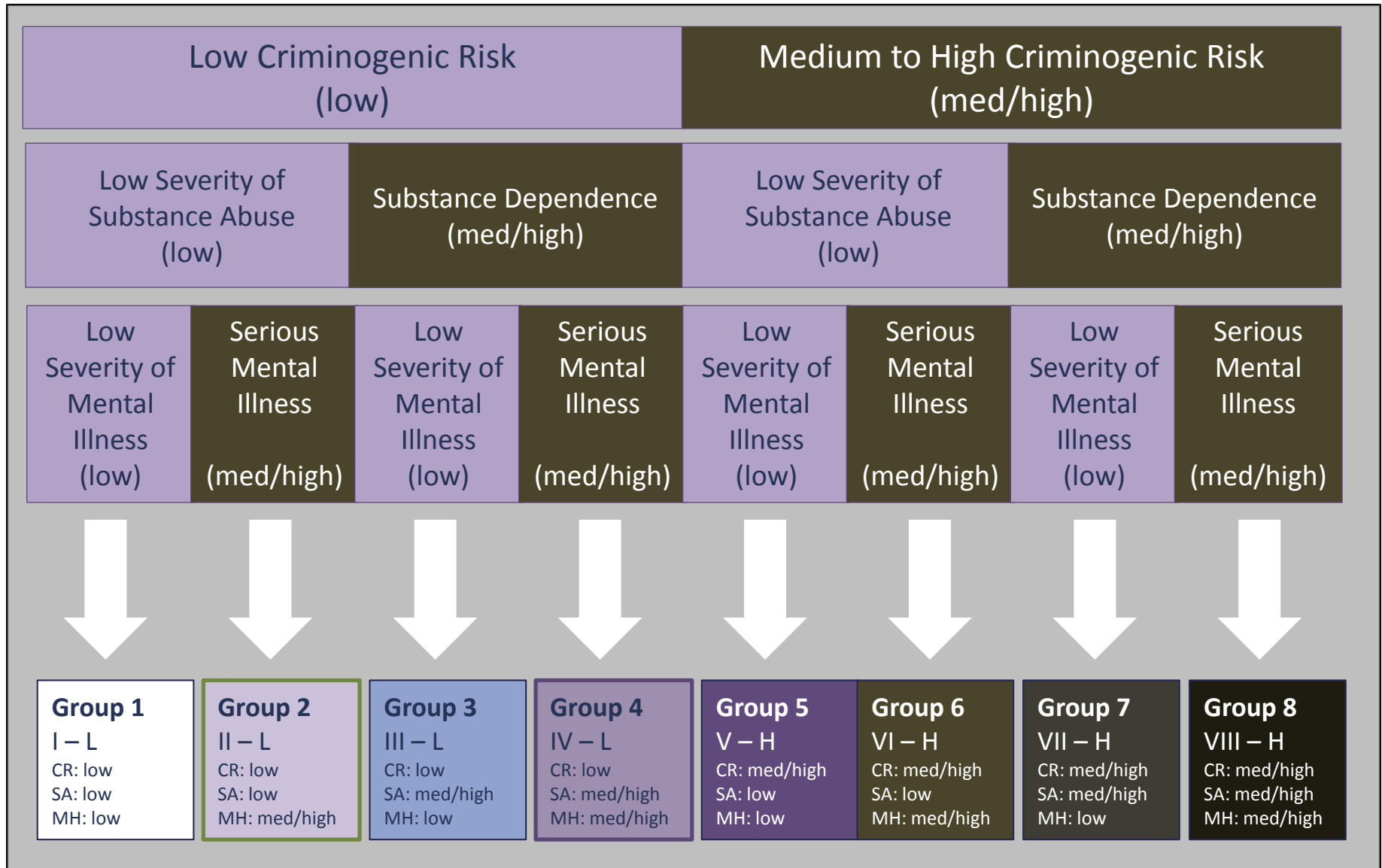
A Person with Mental Illness in the Criminal Justice System: A Flowchart of Select Events



Pulling Together a Research-Based Framework

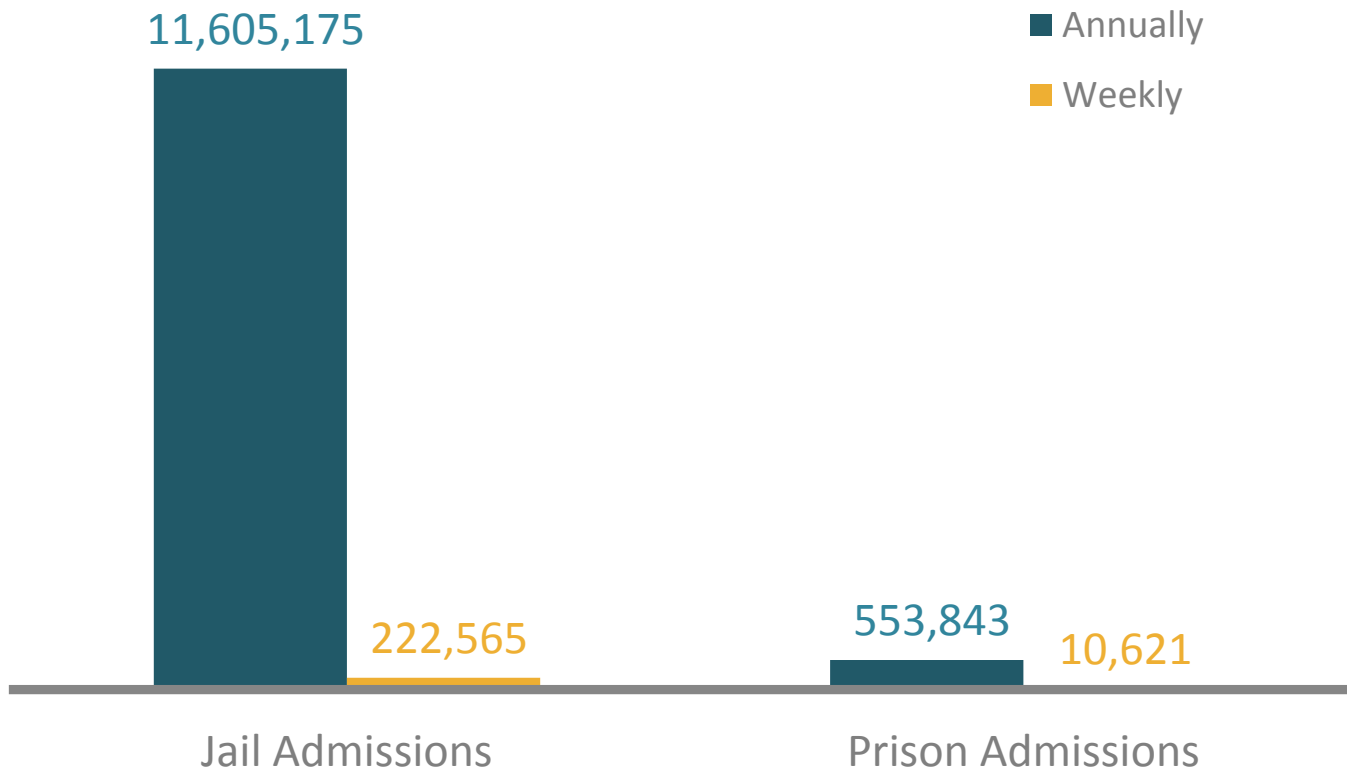


Framework for Targeting Resources Effectively



Jails are Where the Volume is

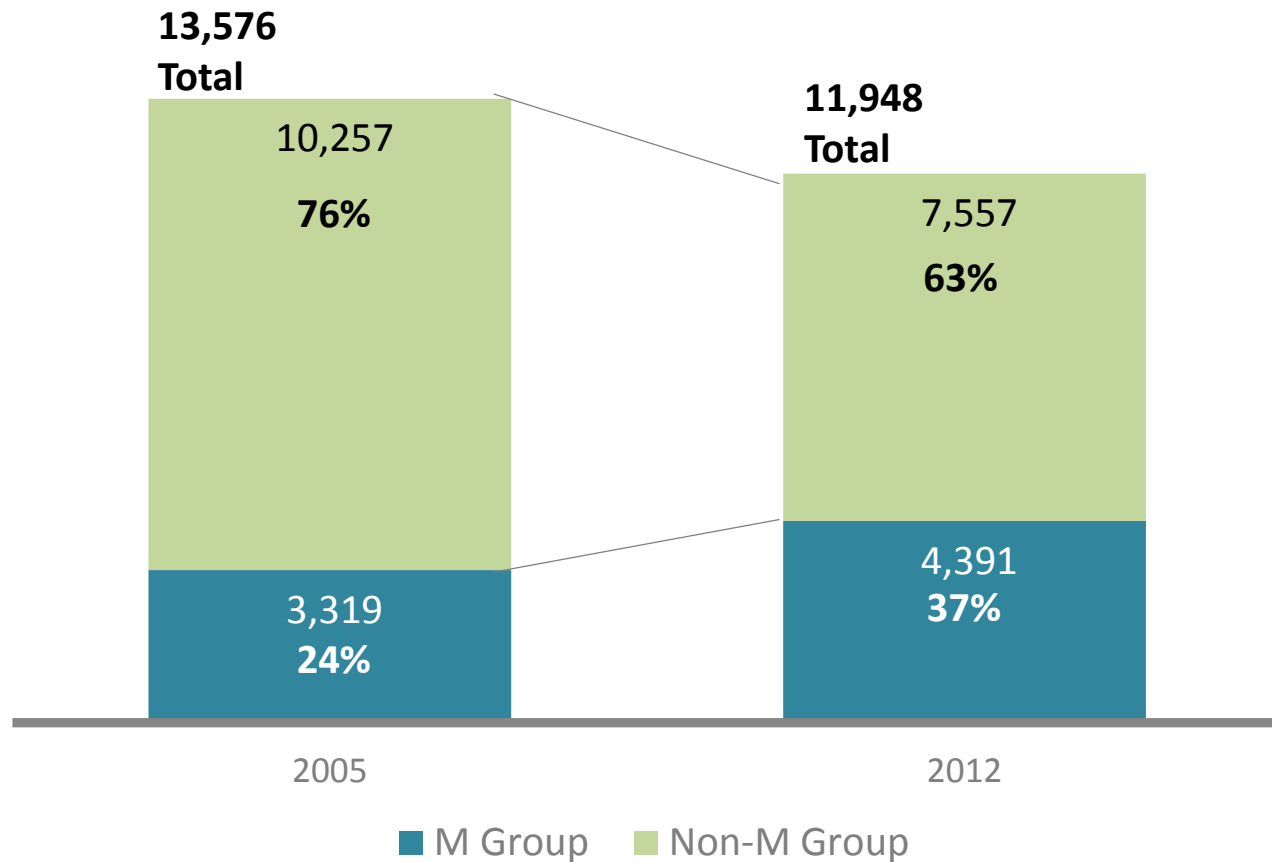
Number of Admissions to Jail and Prison Weekly and Annually, 2012



Jails Report Increases in the Numbers of People Mental with Illnesses

NYC Jail Population (2005-2012)

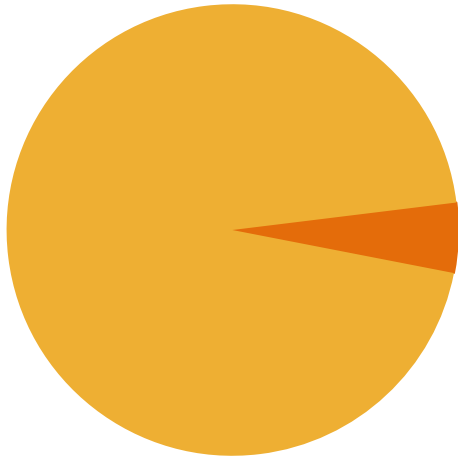
Average Daily Jail Population (ADP) and ADP with Mental Health Diagnoses



Mental Illnesses: Overrepresented in Our Jails

General Population

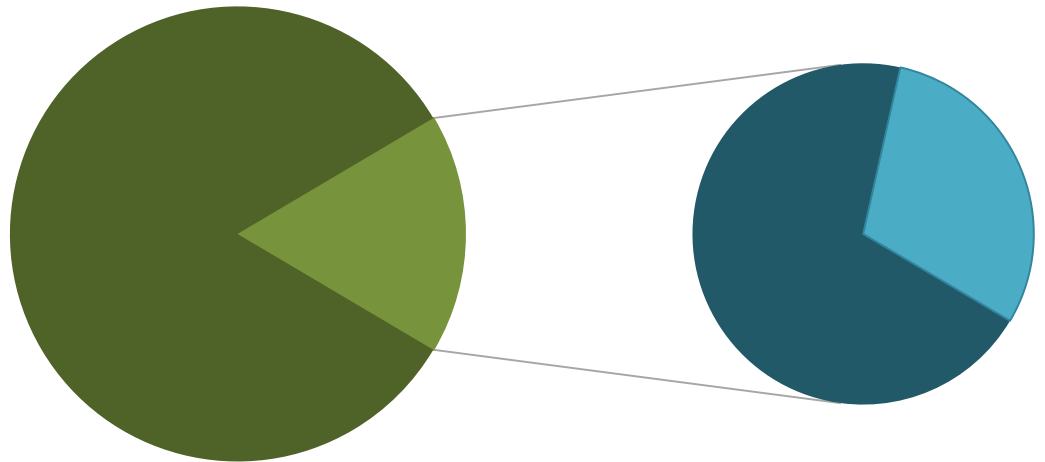
5% Serious Mental Illness



Jail Population

17% Serious Mental Illness

72% Co-Occurring Substance Use Disorder



Factors Driving the Crisis



Disproportionately higher rates of arrest



Longer stays in jail and prison



Limited access to health care



Higher recidivism rates



Low utilization of EBPs



More criminogenic risk factors

01. Counties Step Up but Face Key Challenges: Why is it so hard to fix?



Key Challenges Counties Face: Observations from the Field

1.

Being data driven

2.

Using best practices

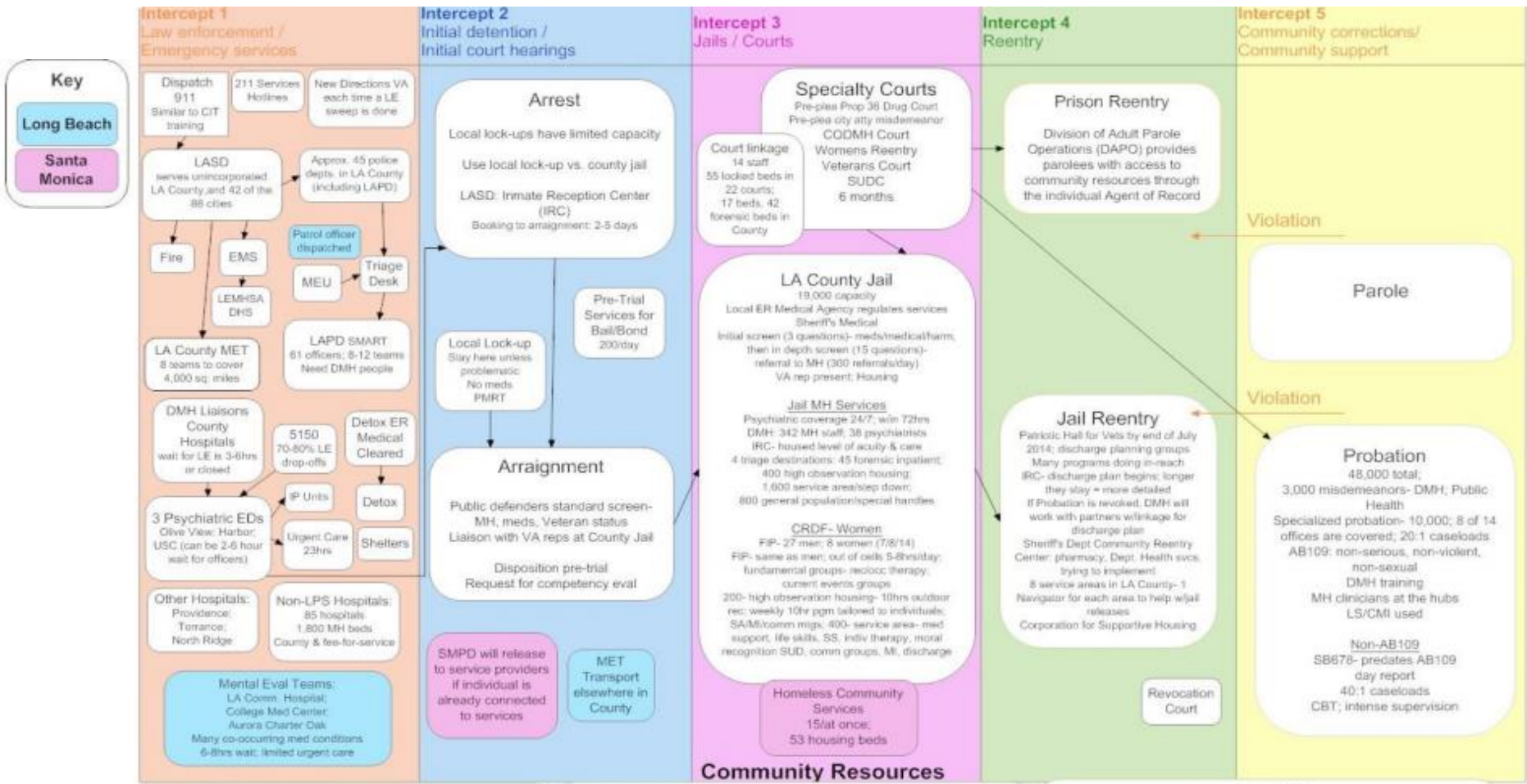
3.

Continuity of care

4.

Measuring results

Challenge 1 - Being Data Driven: Policymakers Face Complex Systems with Limited Information



Challenge 1 - Being Data Driven: Not Knowing the Target Population

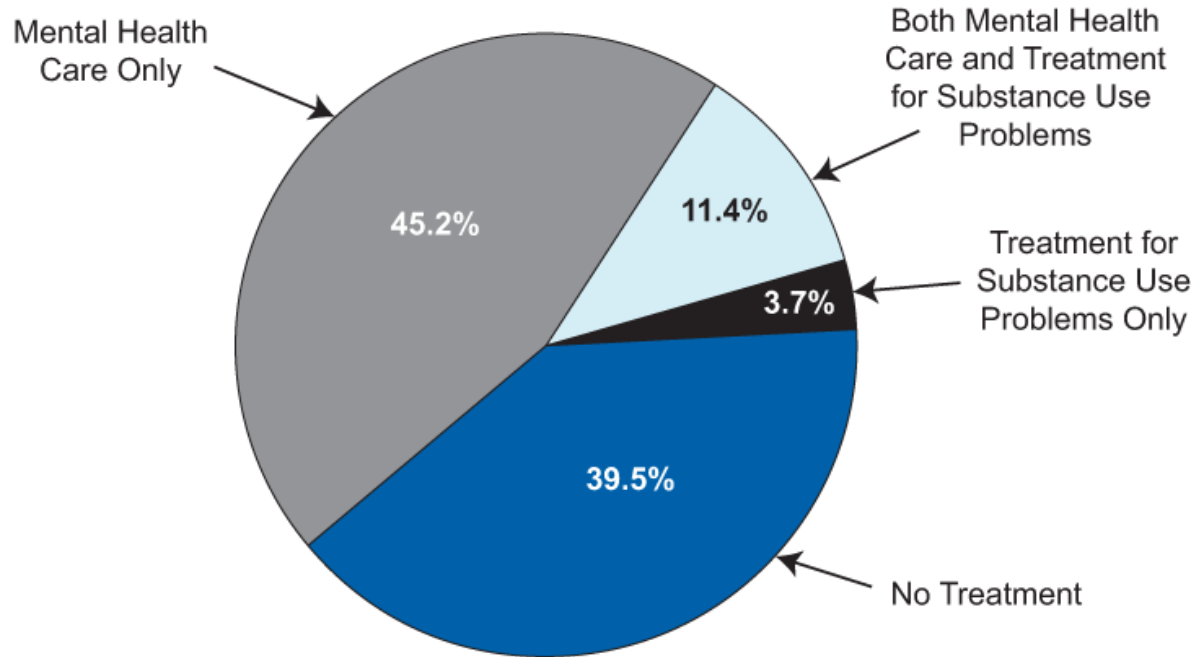
	County A	County B	County C	County D
Mental Health Assessment	✓	○	✓	✓ -
Substance Abuse Assessment	○	○	✓ -	○
Risk Assessment	✓ -	○	○	○

Challenge 2 – Using Best Practices: Addressing Dynamic Needs

Dynamic Risk Factor	Need
History of antisocial behavior	Build alternative behaviors
Antisocial personality pattern	Problem solving skills, anger management
Antisocial cognition	Develop less risky thinking
Antisocial associates	Reduce association with criminal others
Family and/or marital discord	Reduce conflict, build positive relationships
Poor school and/or work performance	Enhance performance, rewards
Few leisure or recreation activities	Enhance outside involvement
Substance abuse	Reduce use through integrated treatment

Challenge 2 – Using Best Practices: The Science to Service Gaps

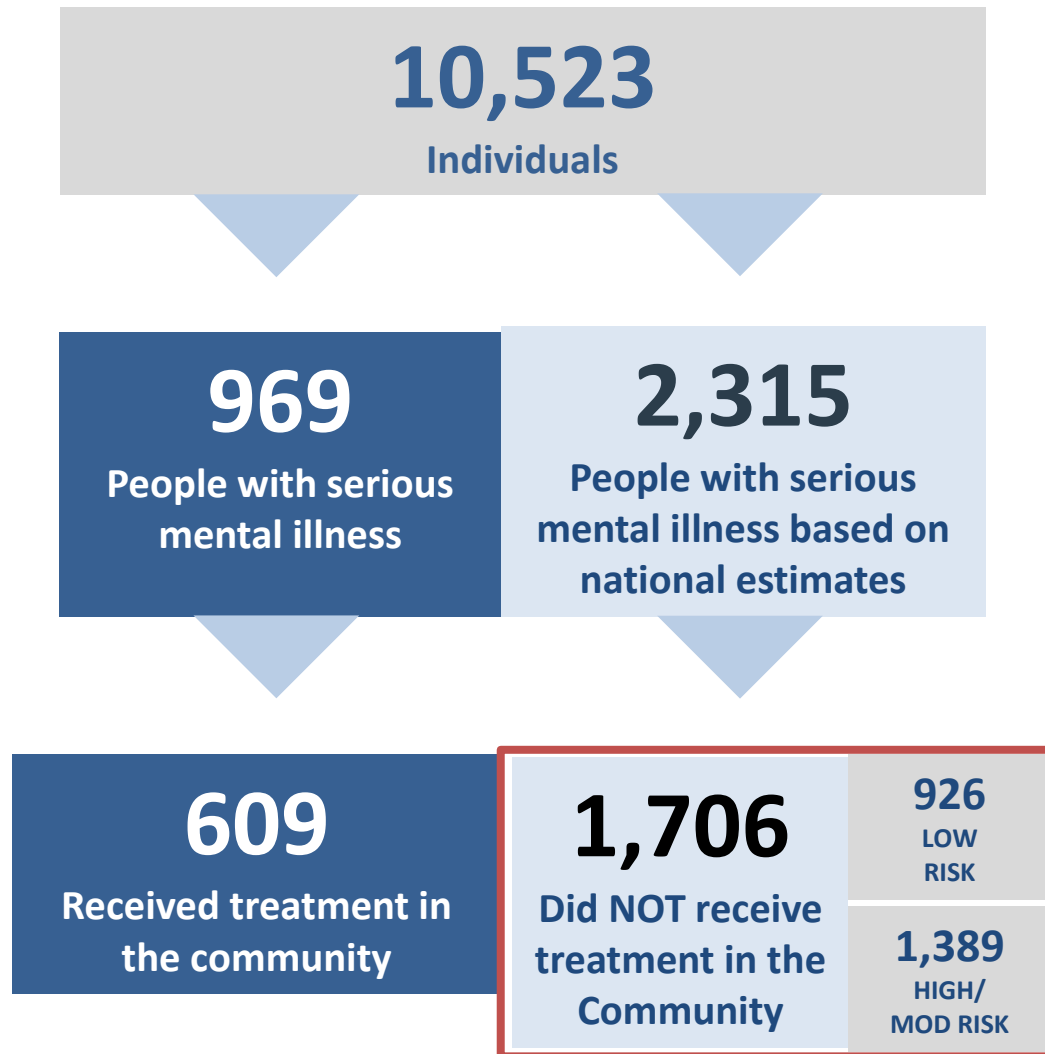
Past Year Mental Health Care and Treatment for Adults 18 or Older with Both SMI and Substance Use Disorder



2.5 Million Adults with Co-Occurring SMI and Substance Use Disorder

Challenge 3 – Continuity of Care

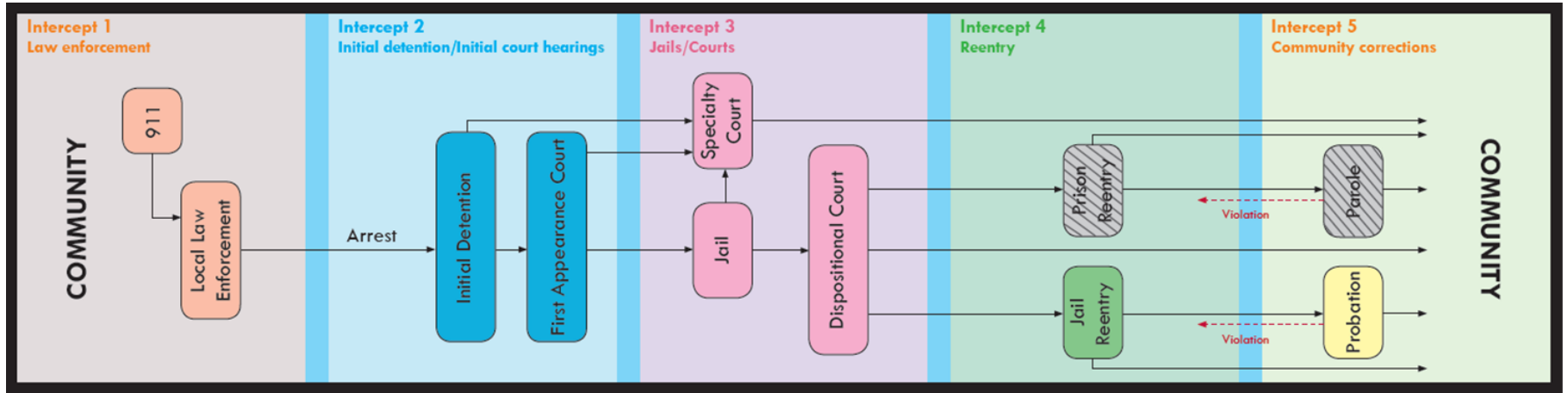
Existing Services Only Reach a Small Fraction of Those in Need



Example from Franklin County, OH

Challenge 4 – Tracking Progress:

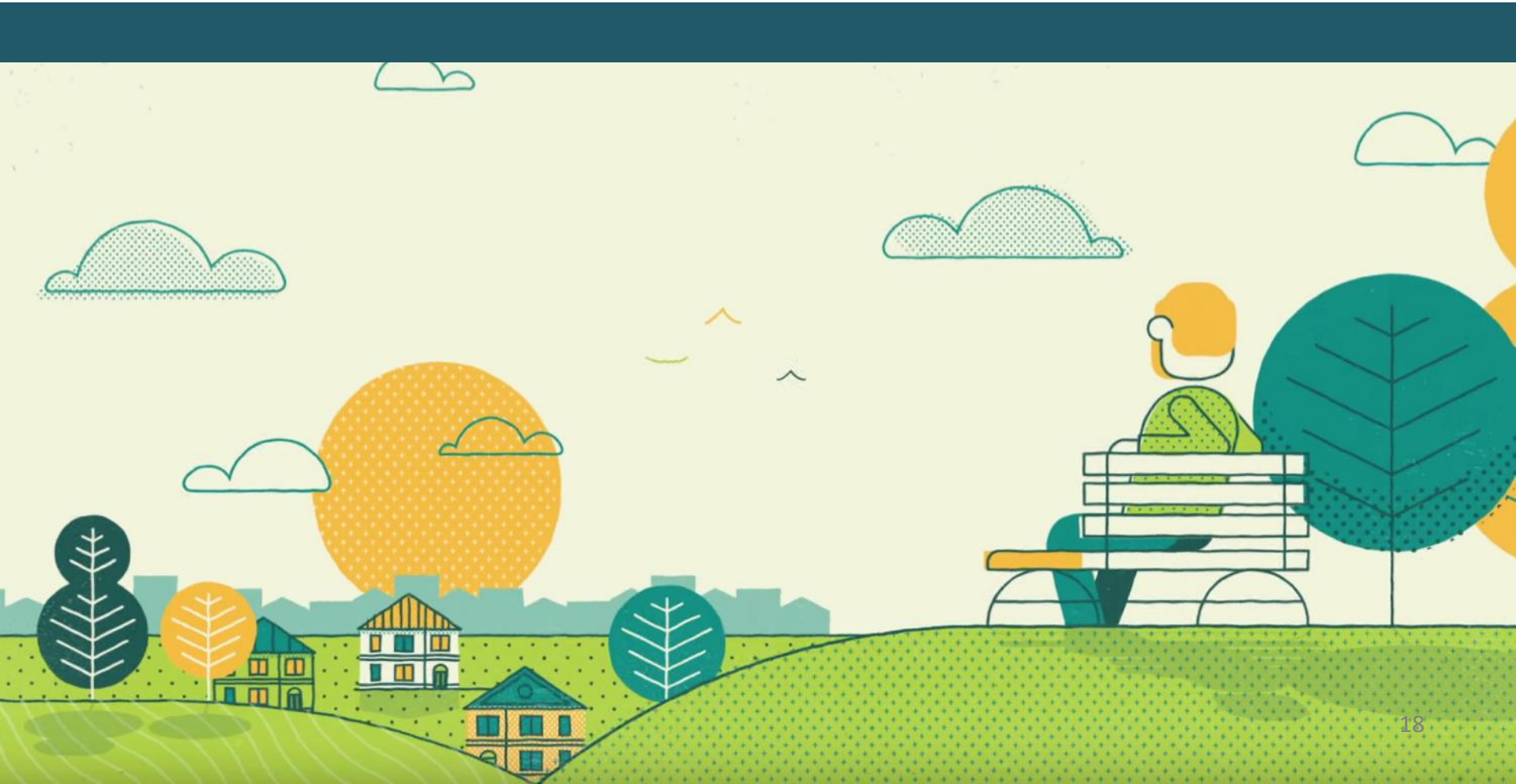
Focusing County Leaders on Key Outcomes Measures



Outcome measures needed to evaluate impact and prioritize scarce resources

- 1. Reduce**
the number of people with mental illness booked into jail
- 2. Shorten**
the length of stay for people with mental illnesses in jails
- 3. Increase**
the percentage of people with mental illnesses in jail connected to the right services and supports
- 4. Lower**
rates of recidivism

02. Effective Strategic Plans: How do we move forward?



Overarching Goal




*There will be fewer
people with mental
illnesses in our jails
tomorrow
than there are today.*

Launched Stepping Up in May 2015



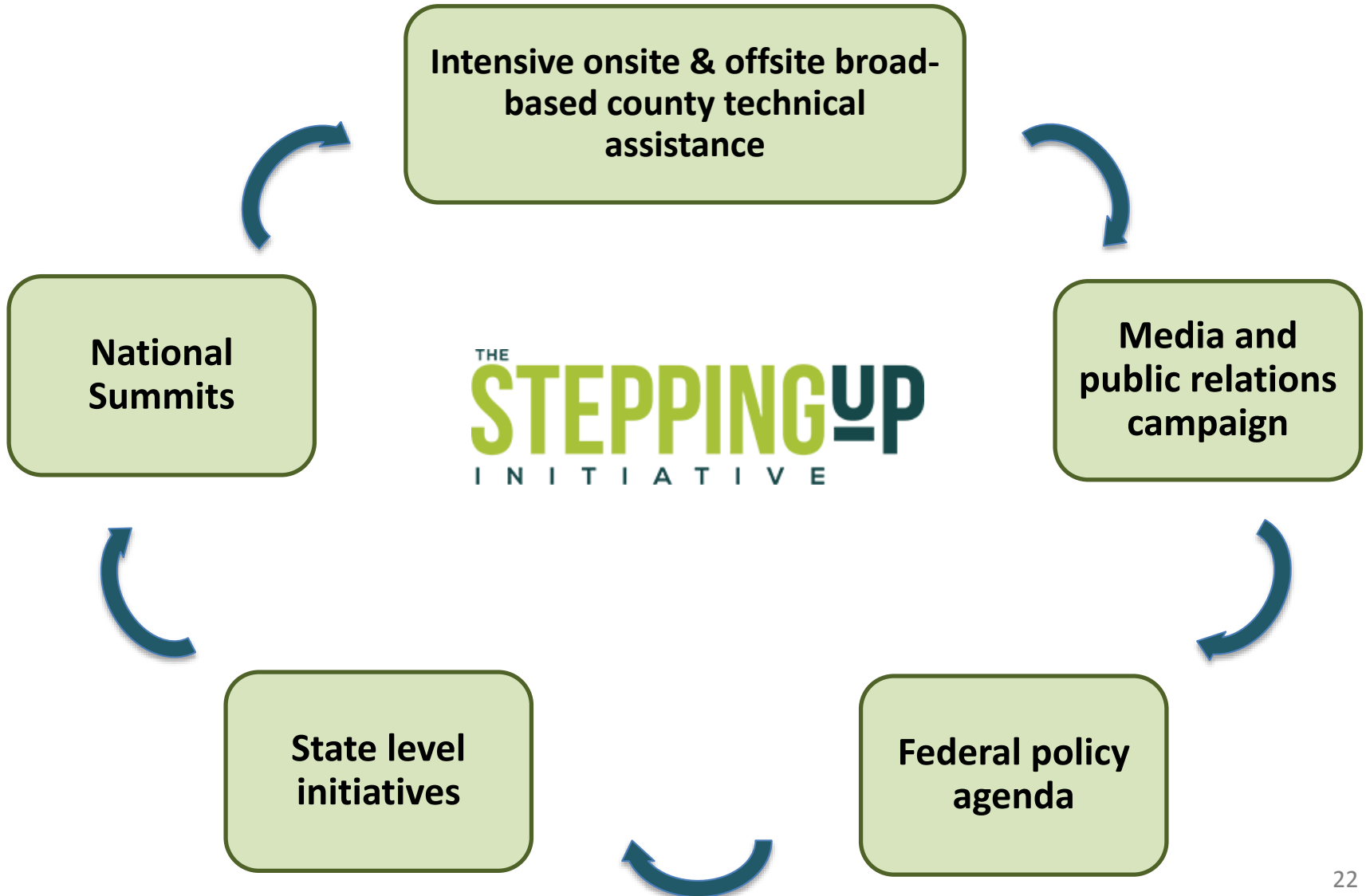
How do We Know if a County is Positioned to Reduce Number of People with Mental Illness in Jail?



Six Key Questions

1. Is your leadership committed?
2. Do you have timely screening and assessment?
3. Do you have baseline data?
4. Have you conducted a comprehensive process analysis and service inventory?
5. Have you prioritized policy, practice, and funding?
6. Do you track progress?

Components of Stepping Up



THE STEPPING UP INITIATIVE

California

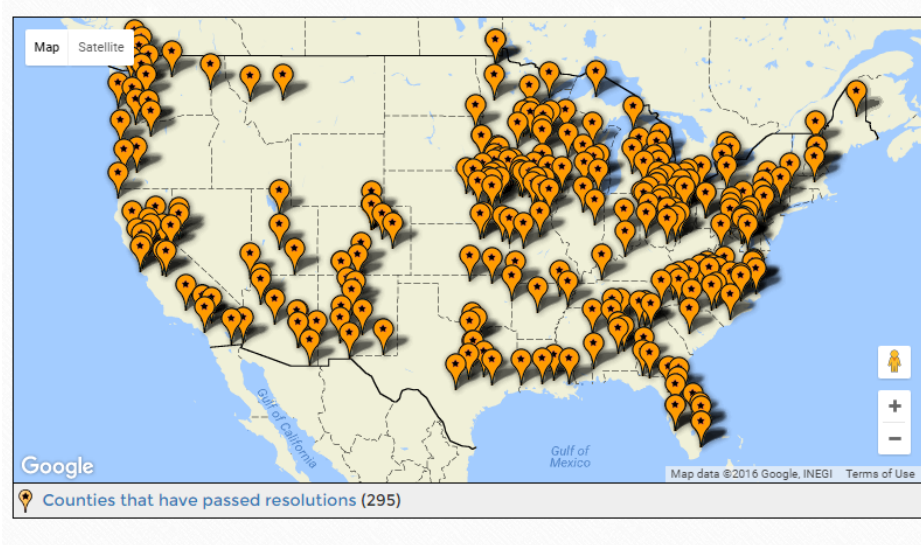
Sacramento Launch, May 2015



Partners and Related Efforts



21 California Counties Have Stepped Up; More Engaged



Alameda

Imperial

Merced

San Joaquin

Calaveras

Kern

Orange

Solano

Contra Costa

Los Angeles

Riverside

Sonoma

Del Norte

Madera

Santa Clara

Sutter

El Dorado

Mendocino

Santa Cruz

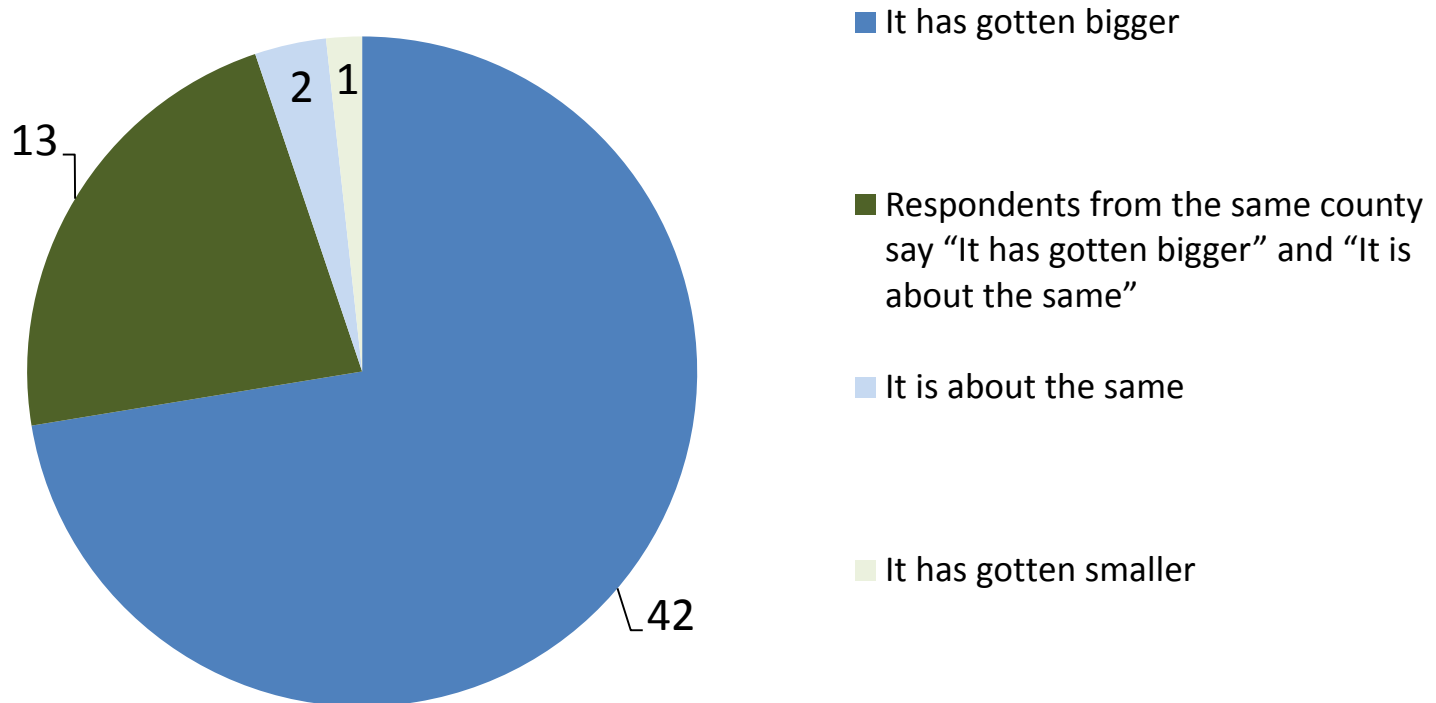
Yolo

Yuba

Stepping Up counties represent about 60% of the state's average daily jail population.

Almost all counties report more people with mental illnesses in jail now than five years ago

Survey Question: What is your impression of the number of people with mental illnesses in your county's jails over the past five years?



100% responding Sheriffs (14) said "It has gotten bigger."

Do We Conduct Timely Screening And Assessments?

National Picture:

- Agreement that universal screening for mental health, substance use, and criminogenic risk are necessary to inform good decision-making
- Very few, if any, county jails do this
- Even counties often held up as models struggle with this

Slide from National Stepping Up Presentations

	County A	County B	County C	County D
Mental Health Assessment	✓	○	✓	✓ -
Substance Abuse Assessment	○	○	✓ -	○
Risk Assessment	✓ -	○	○	○

Do We Have Baseline Data?

National Picture:

- Few places have definitions and processes to collect data
- Few, if any, places regularly run reports to track these four key measures



Four Key Measures



- Prevalence rate of mental illnesses in jail population
- Length of time people with mental illnesses stay in jail
- Connections to community-based treatment, services, and supports
- Recidivism rates



Electronically collected data



Do We Conduct a Comprehensive Process Analysis and Inventory of Services?

Survey Question : Many communities undertake a process of identifying available community-based treatment and support services and “mapping” the flow of people with mental illnesses from initial contact with law enforcement through booking in jail, disposition of the court case, incarceration, and reentry. Please check all of the following that apply to your system:

- An interagency group has **identified community-based treatment services** (conducted an inventory of services) **26 counties**
- An interagency group has **mapped out the flow of people with mental illnesses** through the local justice system **15 counties**
- An interagency group has **done both** **13 counties**

Respondents from **34 counties** indicated
“We are interested in assistance on these steps”

Identified Needs

Survey Question: Which of the following do you think would have the greatest impact on improving your county's capacity to address this issue? *Check all that apply*

- 49 counties- Resources to collect and track data
- 46 counties- Research-based interventions for people involved with the justice system who have behavioral health needs
- 43 counties- Information about strategies and solutions that work
- 37 counties- Improved cooperation among the relevant agencies and partners
- 36 counties- Dedicated time to solving these issues
- 28 counties- Clear leadership on this issue
- 27 counties- State policy change

“We work in silos and funding is separated between departments, which results in services being separated” – Write in response

THE STEPPING UP INITIATIVE

California



Chief Probation Officers
of California

cbhda



- Launch in Sacramento May 2015
- 21 Counties have passed Resolutions
- 4 Counties at National Summit
- 58 County survey of practices
- Stepping Up California Summit- January 2017
- Resources and support for planning efforts



THANK YOU

For more information, contact: Hallie Fader-Towe (hfader@csg.org)

Stepping Up
www.stepuptogether.org