



“

I feel good
about myself.
My life a
better life.

LOIS CURTIS

ACTIVIST, ARTIST, AND
PLAINTIFFS IN THE 1999
OLMSTEAD SUPREME COURT
DECISION





<https://www.lamag.com/longform/what-happened-to-mitrice-richardson/>



<https://a16.asmdc.org/ab-988-miles-hall-lifeline-act>

C.A.R.E. COURT

C.A.R.E. = Community Assistance Recovery and Empowerment

COURT ≠ CARE

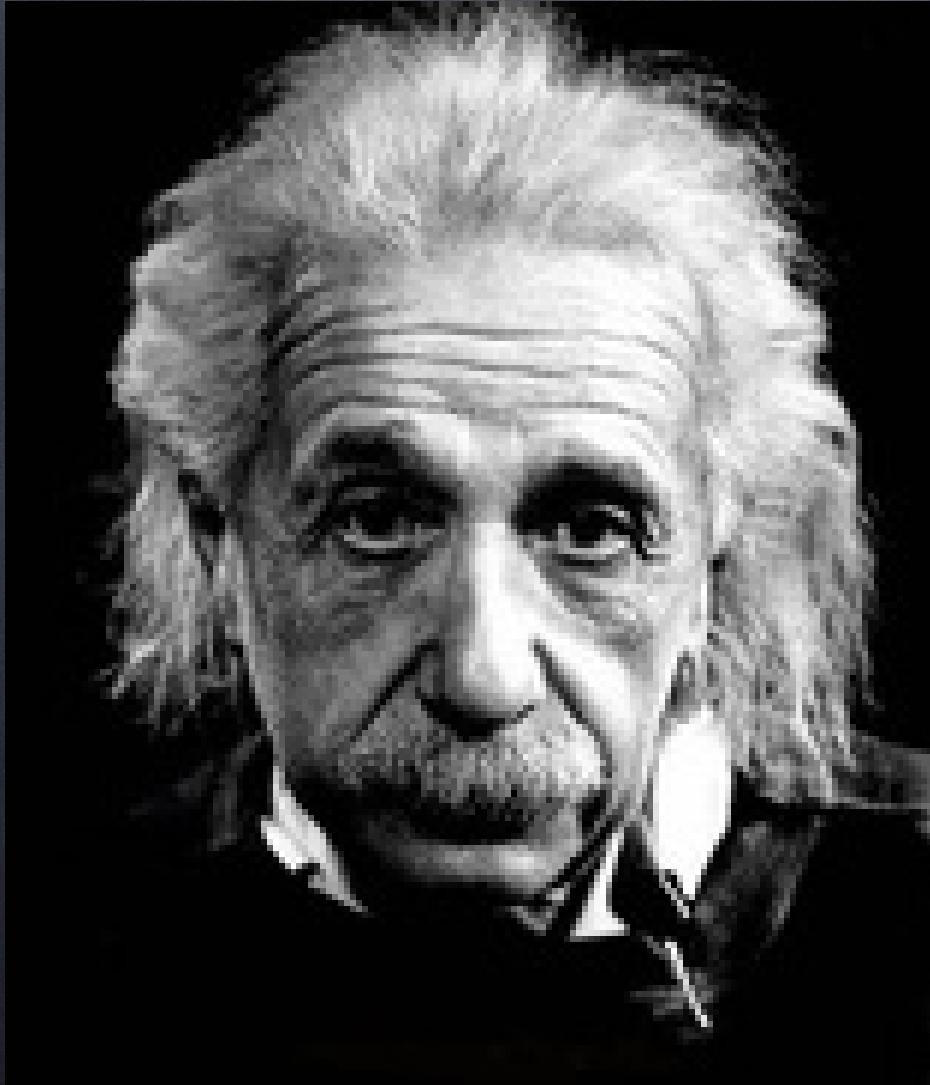
COURT ≠ VOLUNTARY

COURT ≠ RECOVERY

COURT ≠ EMPOWERMENT

COURT ≠ PERMANENT (SUPPORTIVE) HOUSING

What is the problem CARE Court trying to solve?



"If I had an hour to solve a problem and my life depended on the solution, I would spend the first 55 minutes determining the proper question to ask, for once I know the proper question, I could solve the problem in less than five minutes."

— Albert Einstein

Radical
simply means
grasping things at
the root.

Angela
Davis





"Many people are so uncomfortable with the stigma associated with mental illness that they would rather suffer in silence than get the help they need"

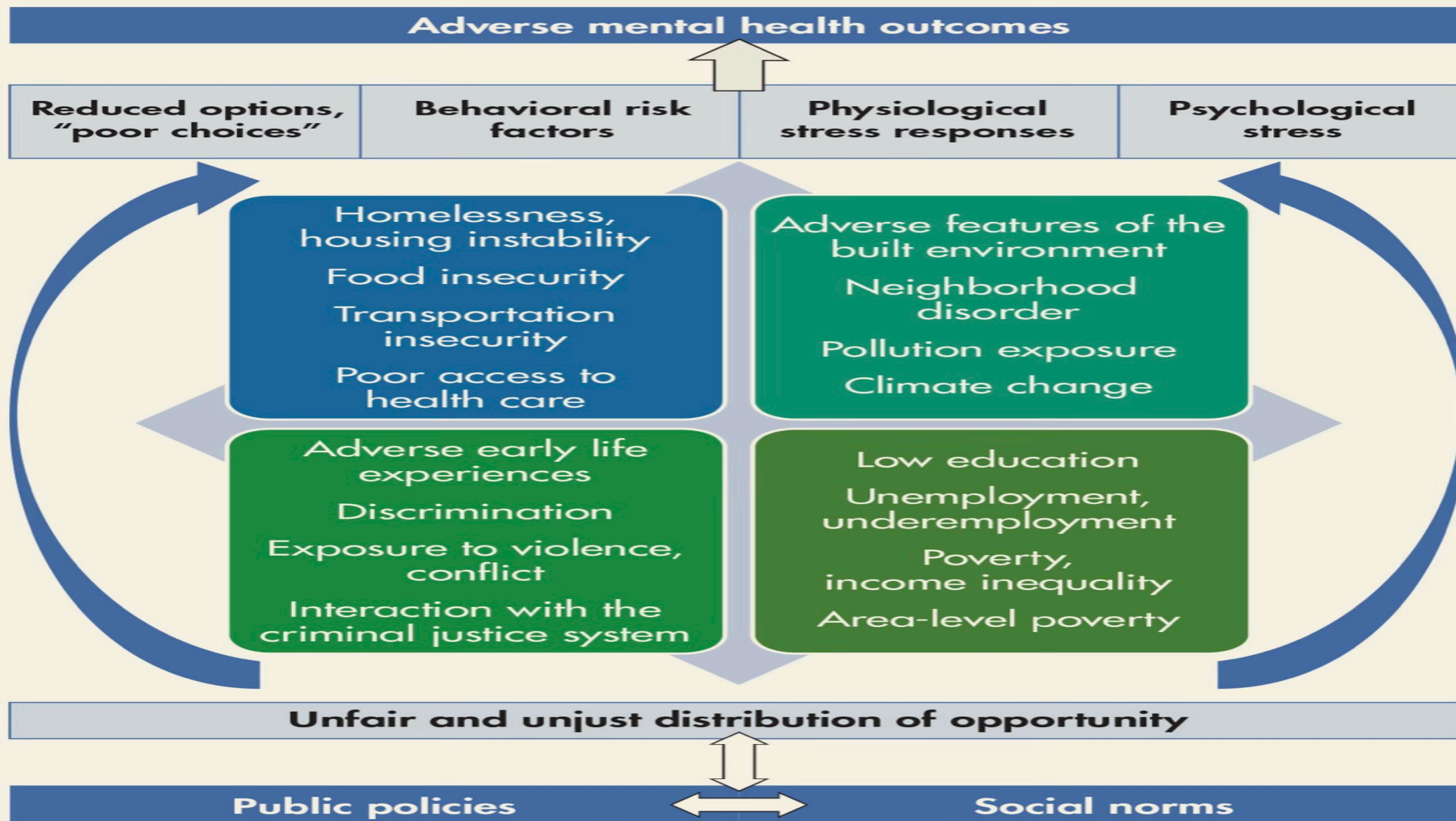
Pat Deegan

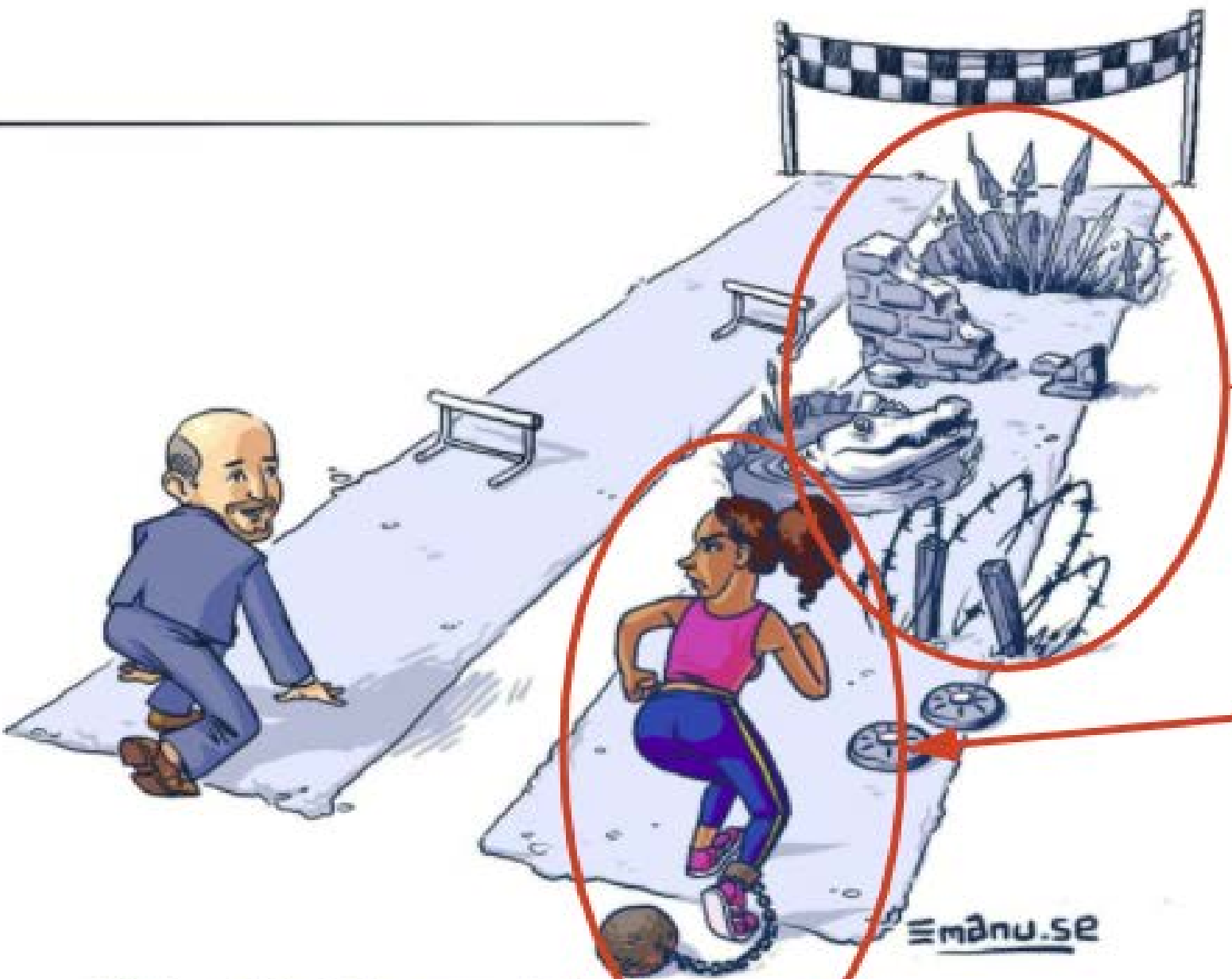
It's pronounced...

[skit-suh-FREE-nee-uh]

not

[KREY-zee]

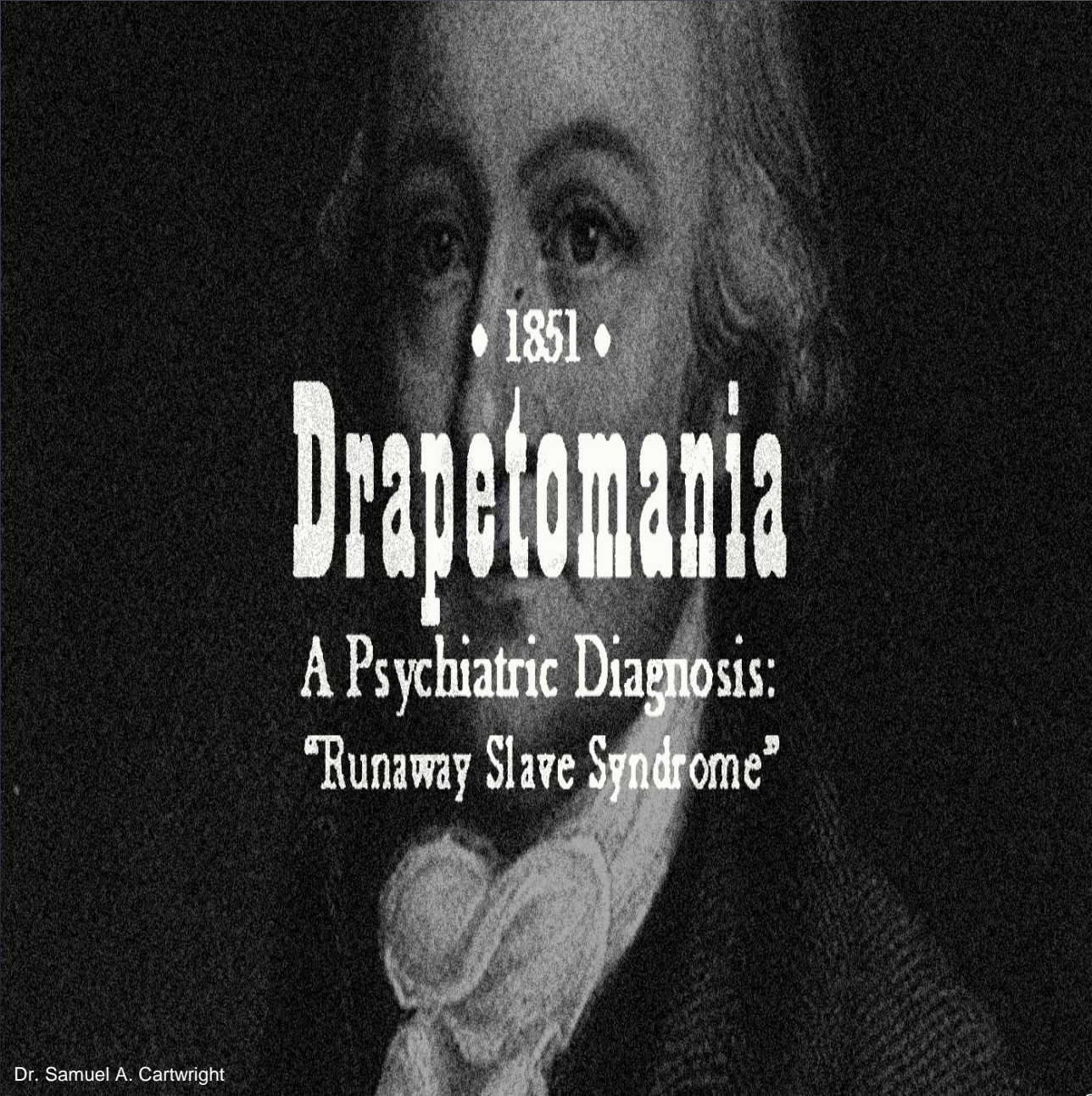




Structural competency is seeing & dismantling the barriers in front of her as a WOC.

Cultural competency is seeing & honoring her lived experiences as a WOC.

“What’s the matter?
It’s the same distance!”



◆ 1851 ◆

Drapetomania

A Psychiatric Diagnosis:
"Runaway Slave Syndrome"

Dr. Samuel A. Cartwright

"If treated kindly, well fed and clothed, with fuel enough to keep a small fire burning all night

— separated into families, each family having its own house

— not permitted to run about at night to visit their neighbors, to receive visits or use intoxicating liquors, and not overworked or exposed too much to the weather, they are very easily governed more so than any other people in the world.

If any one or more of them, at any time, are inclined to raise their heads to a level with their master or overseer, humanity and their own good requires that they should be punished until they fall into that submissive state which was intended for them to occupy.

They have only to be kept in that state, and treated like children to prevent and cure them from running away"

S. L. Chorover. *From Genesis to Genocide* (Cambridge, Massachusetts: MIT Press 1974). p. 150.

RAISE THE EMOTIONAL THRESHOLD

against
everyday stresses...

Serpasil in a LOW, ONCE-A-DAY* dose acts as a gentle mood-leveling agent...sets up a needed "tranquility barrier" for the many patients who, without some help, are incapable of dealing calmly with a daily pile-up of stressful situations.

For chronic stress, Serpasil is best used daily. Serpasil provides an effective pathway for the release of stress, anxiety and irritability...with a minimum of side effects.

1. 250 mg. capsules, 10 mg. capsules, 5 mg. capsules, 2.5 mg. capsules, and 1 mg. capsules. SERPASIL, 25 mg. or 10 mg. per unit capsules.

C. I. B. A. Serpasil, Inc.

Serpasil

Manufactured by C. I. B. A.



why is this woman tired?

She may be tired for either of two reasons:

- * because she is physically overworked. If this is the case, you prescribe rest, because rest is the only cure for this kind of physical tiredness.
- * because she is mentally "done in". Many of your patients—particularly housewives—are crushed under a load of dull, routine duties that leave them in a state of mental and emotional fatigue. For these patients, you may find *Dexedrine* an ideal prescription. *Dexedrine* will give them a feeling of energy and well-being, renewing their interest in life and living. *Dexedrine** (dextro-amphetamine sulfate, S.K.F.) is available as tablets, elixir, and *Sponule** capsules (sustained release capsules, S.K.F.) and is manufactured by Smith, Kline & French Laboratories, Philadelphia.

*T.M. Reg. U.S. Pat. Off. Trade Applied For.

Assaultive and belligerent?



Cooperation often begins with

HALDOL (haloperidol)

a first choice for starting therapy

Acts promptly to control aggressive, assaultive behavior

Several studies have assessed the initial effectiveness of HALDOL (haloperidol) in controlling aggressive and assaultive behavior. "Over the course of 10 days, nearly 90% of patients severely distressed by a group of chronic schizophrenic patients in a general hospital psychiatric ward were stabilized with HALDOL. Patients responded to the drug very rapidly, within a few days after the treatment was initiated by their medical staff," stated the authors.

Usually leaves patients relatively alert and responsive

Although some instances of drowsiness have been observed, patients treated with HALDOL responded to care. In a study of 100 patients with chronic psychosis in a long-term care facility, the patients remained alert and were available to participate in treatment. In another study, patients treated with HALDOL "remained alert and responsive to care in the institution that allows non-drug-oriented care of the patient while on the therapeutic regimen."

Reduces risk of serious adverse reactions

HALDOL (haloperidol) is non-hypnotic, avoids an accumulation of the sedation associated with the phenothiazines, does not cause orthostatic hypotension, has not been associated with a low risk of extrapyramidal adverse reactions, and does not cause changes in body temperature, weight, and appetite. The non-hypnotic side effect of HALDOL (haloperidol)—involuntary movements—can usually be controlled and well tolerated.

© 1987, J. B. Lilly, Inc. All rights reserved. HALDOL (haloperidol) is a registered trademark of J. B. Lilly, Inc. All other trademarks are the property of their respective owners.

Indications, Dosage, Side Effects, Contraindications, Warnings, Precautions and Adverse Reactions: please see page _____.

EXAMPLE CARE COURT SCENARIO: Susan*

WHO?

A 55-year-old woman with a diagnosis of schizophrenia. The voices in her head scream at her and she can't tell which are her thoughts and or if other people are yelling at her. The voices get in the way of taking care of her poorly controlled diabetes. She feel safe only in her car, alone with her cat, isolated from others. She was briefly enrolled in mental health treatment, but shortly after enrolling she declined services and treatment. She is at risk of conservatorship.



*The above example is not based on real life people or scenarios.

EXAMPLE CARE COURT SCENARIO: Victor*

WHO?

A 25-year-old male diagnosed with schizoaffective disorder and substance use disorder who typically takes medication as directed but recently stopped completely due to side effects. His housing is unstable. Living part time with family and part time on the street. Recently, his substance misuse has substantially increased.



*The above example is not based on real life people or scenarios.

The U.S. Census shows about **6.5%** of Californians identify as black or African American, but they account for nearly **40%** of the state's homeless, according to a Department of Housing and Urban Development report to Congress.

- As of 2019, California is experiencing a **shortage of 1.4 million affordable homes** given the demand for affordable housing.
- Black people have experienced overrepresentation in the **criminal justice system, housing segregation and employment discrimination**, which have led to their disproportionate representation in the homeless population.



“WE AIN’T CRAZY! Just Coping With a Crazy System”

Pathways into the Black Population
for Eliminating Mental Health Disparities

love

ityfamilycouragepeacetogethernessculturefaithlove

EDITORS

V. Diane Woods, Dr.P.H.

Project Director, Client Family Member

Nicelma J. King, Ph.D.

Public Policy Analyst, Client Family Member

Suzanne Midori Hanna, Ph.D.

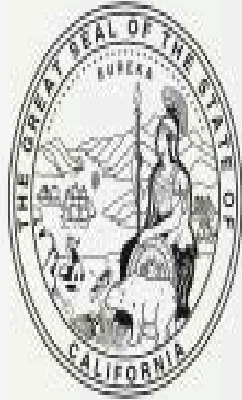
Marriage and Family Therapist

Carolyn Murray, Ph.D.

Psychologist

MAY 2012

<https://lhc.ca.gov/sites/lhc.ca.gov/files/Reports/225/ReportsSubmitted/CRDPAfricanAmericanPopulationReport.pdf>



California Task Force to Study and Develop Reparation Proposals for African Americans

INTERIM REPORT

June 2022

<https://oag.ca.gov/system/files/media/ab3121-reparations-interim-report-2022.pdf>

Mental & Physical Harm and Neglect (page 23)

- *Eliminate anti-Black healthcare laws and policies and anti-Black discrimination in healthcare .*
- Compensate, both financially and with cost-free high quality comprehensive services and supports, individuals whose mental and physical health has been permanently damaged by anti-Black healthcare system policies and treatment, including, but not limited to, those subjected to forced sterilization, medical experimentation, *racist sentencing disparities*, police violence, environmental racism, and *psychological harm from race-related stress* .
- *Identify and eliminate discrimination and systemic racism*, including but not limited to, discrimination by healthcare providers; *inequity in access to healthcare*; inaccessibility of health insurance; *funding needs of health-focused community organizations*; the dearth of clinical research on health conditions that affect African Americans; the underrepresentation of African Americans among medical and mental health providers; and *the lack of race-conscious public health policy* .
- Create free healthcare programs .
- Provide ongoing medical education, particularly on illnesses and other issues that historically impact health of African Americans; provide medical clinics .
- *Implement Medi-Cal reforms to increase flexibility for the use of community evidence practices designed, tested and implemented by the Black community and reduce the tendency to use culturally bankrupt evidence based practices that are not field tested* .

JAMA Psychiatry | [Original Investigation](#)

Effect of Psychiatric Advance Directives Facilitated by Peer Workers on Compulsory Admission Among People With Mental Illness

A Randomized Clinical Trial

Aurélie Tinland, MD, PhD; Sandrine Loubière, PhD; Frederic Mougeot, PhD; Emmanuelle Jouet, PhD; Magali Pontier, MD; Karine Baumstarck, MD, PhD; Anderson Loundou, PhD; Nicolas Franck, MD, PhD; Christophe Lançon, MD, PhD; Pascal Auquier, MD, PhD; for the DAiP Group

[+ Supplemental content](#)

IMPORTANCE Reducing the use of coercion in mental health care is crucial from a human rights and public health perspective. Psychiatric advance directives (PADs) are promising tools that may reduce compulsory admissions. Assessments of PADs have included facilitation by health care agents but not facilitation by peer workers.

OBJECTIVE To determine the efficacy of PADs facilitated by peer workers (PW-PAD) in people with mental disorders.

Findings In this randomized clinical trial, 394 adults with schizophrenia, bipolar I disorder, or schizoaffective disorder with a previous compulsory hospitalization were randomized into 2 groups (ratio 1:1). Participants in the PW-PAD group **experienced significantly fewer compulsory admissions than those in the control group.**

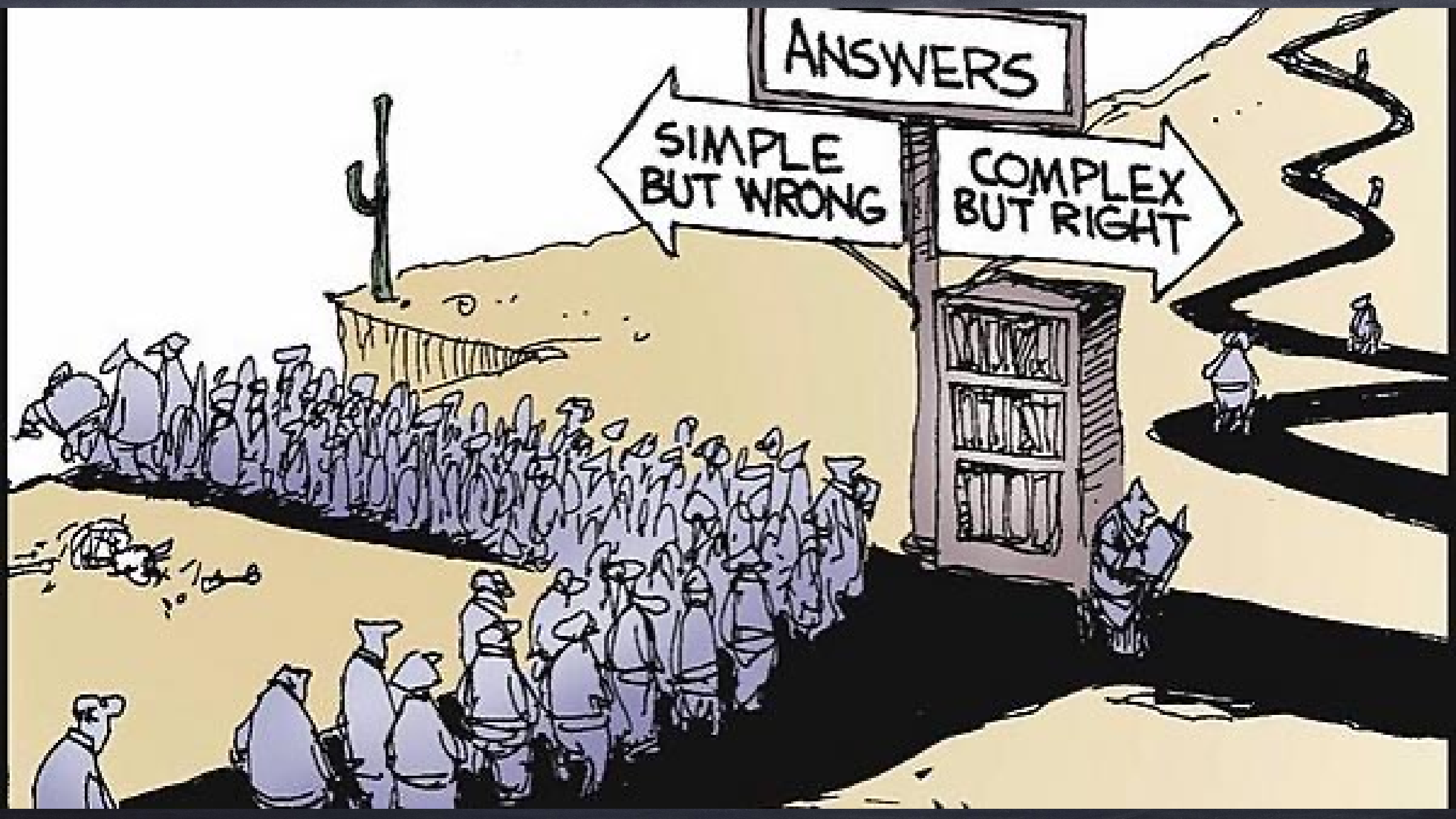
Meaning **These findings support the use of peer worker–facilitated psychiatric advance directives to prevent compulsory rehospitalization in people with severe mental illness.**

**Once you
get there,
there is no
there, there.**

ANSWERS

SIMPLE
BUT WRONG

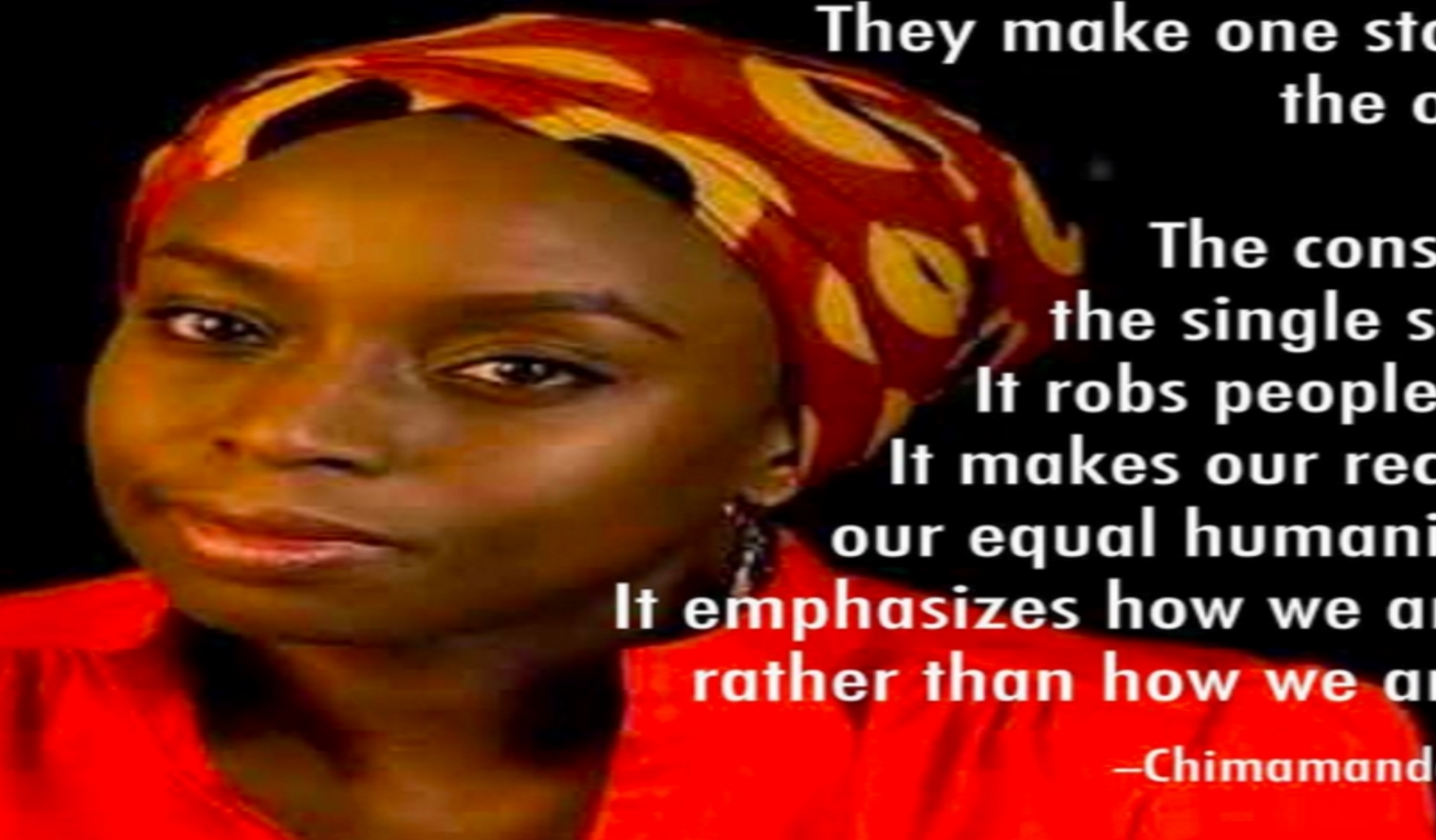
COMPLEX
BUT RIGHT



"The single story creates stereotypes, and the problem with stereotypes is not that they are untrue, but that they are incomplete. They make one story become the only story..."

The consequence of the single story is this: It robs people of dignity. It makes our recognition of our equal humanity difficult. It emphasizes how we are different rather than how we are similar."

–Chimamanda Ngozi Adichie



Presented by:

Keris Jän Myrick, M.B.A., M.S.,
Certified Personal Medicine Coach, CPMC

Podcast Host -
Unapologetically Black Unicorns

kerismyrick@gmail.com

MHSOAC July 28, 2022

