

New Commission Staff Biographies

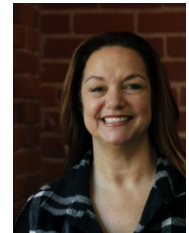
March 26, 2026

Alicia DeLouize Research Scientist



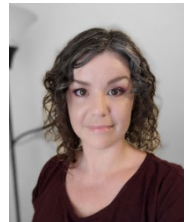
Alicia DeLouize completed her Ph.D. in Biological Anthropology at the University of Oregon and her Master's in Psychological Science at the University of Colorado. Her research focuses on the evolutionary and environmental causes of health, including mental health, aging, cancer, and other chronic diseases. She has 13 years of experience specializing in data management, statistics, and research methods which include employment as a statistical consultant and the creation of an array of statistical workshops. Alicia recently finished work as a study coordinator for the World Health Organization's World Health Survey Plus, where she has assisted with designing and implementing the collection of anthropometrics, performance test, and minimally invasive biomarker measurements in nationally representative studies globally.

Claudia King Senior Personnel Specialist



Claudia brings more than 14 years of progressive human resources experience, including over five years in state service as a Personnel Specialist. Her background reflects a strong commitment to excellence, collaboration, and service. She is deeply dedicated to fostering effective partnerships and empowering staff through clear communication, guidance, and support.

Corey O'Malley Research Scientist III



Corey is a sociologist specializing in equity-focused mixed methods research and evaluation. As a postdoctoral researcher in Psychiatry and Biobehavioral Sciences at the University of California, Los Angeles, she led a community-partnered formative evaluation of youth crisis triage programs in collaboration with the Commission.

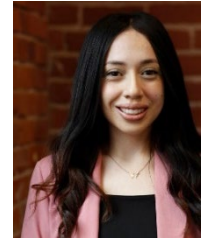
She holds a Ph.D. in Sociology from UCLA, with a focus on historical and comparative analysis of race and ethnicity. Other applied research experience includes work on welfare policy, occupational segregation, censuses, and salary equity. Corey is committed to producing research that is both rigorous and strengthens behavioral health services for children, families, and communities.

On weekends, you might find her baking bread, cheering at a drag show, or exploring with her chihuahua, Max.

Selena Regalado

Research Scientist II

Selena serves as a Research Scientist II at the Commission, where she supports the Universal Mental Health Screening of Children and Youth.



Her work contributes to strengthening statewide school-based mental health systems, with a focus on supporting grantees, promoting effective implementation, and using data to improve outcomes for children and youth.

Before joining the Commission, Selena worked with the UC Davis Center for Reducing Health Disparities, the UC Davis Center for Regional Change, and the California Tribal Epidemiology Center. In these roles, she conducted quantitative and spatial analyses, program evaluations, and project coordination focused on improving health outcomes for underserved and Indigenous communities across California.

Her technical experience includes statistical modeling, survey design, and secondary data analysis using a variety of analytic tools.

Selena holds a Master of Health Science in Public Mental Health and Biostatistics from Johns Hopkins Bloomberg School of Public Health. She is committed to leveraging data for positive impact and advocating for those most in need. She is excited to grow professionally while contributing to the Commission's mission. Selena's hobbies include beading jewelry, solving puzzles, and learning how to golf.

Fuey Saechao

Health Program Specialist II

Fuey Saechao joined the Commission in January 2026 after serving as a Health Program Specialist II at the California EMS Authority where she led the statewide Emergency Medical Services for Children program. In that role, she oversaw complex state and federal initiatives, with a focus on improving systems, ensuring compliance, and advancing policies to enhance pediatric emergency care.



Fuey has spent most of her career with the State in roles with Covered California, Department of Public Health, Department of Health Care Services, and California Volunteers, where she provided program consultation, contract and grant oversight, policy analysis, and training. She holds an MPA with a concentration in Public Management and Policy Analysis, and a bachelor's in business administration.

Fuey will manage a diverse portfolio of Behavioral Health Student Services Act grants and supporting special projects including our quality assurance and process improvements work.