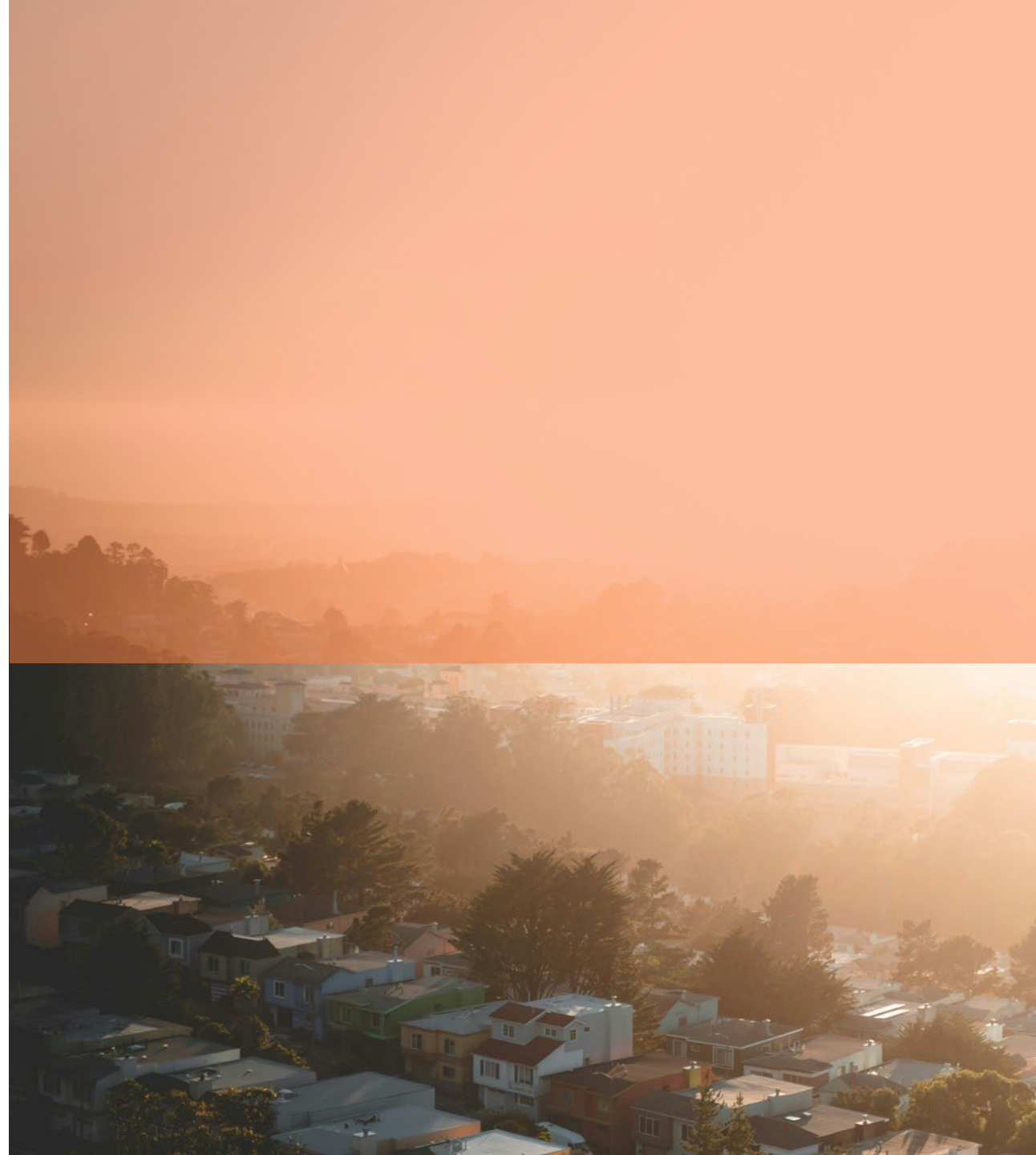




# CBH Data Framework

Presented by Kali Patterson, Chief  
Research, Evaluation, and Programs



# Today's objectives

## CBH Data framework, capabilities, and opportunities

- Understand the Commission's data reporting responsibilities under the Behavioral Health Services Act (BHSA).
- Understand how the Commission uses behavioral health data to inform its work.
- Review CBH's data capabilities and current portfolio.
- Consider how data supports the Commission's role as it relates to BHSA priority populations.



# CBH Data Framework

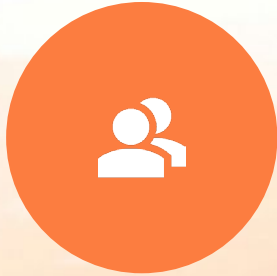
# Behavioral Health Data Explained

Data Uses	Data Types
<ul style="list-style-type: none"><li>• Identify the need</li><li>• Contextualize (risk, disparities)</li><li>• Identify promising solutions and gaps</li><li>• Assess and evaluate impact</li></ul>	<ul style="list-style-type: none"><li>• Behavioral health services data</li><li>• Non-behavioral health data (e.g., housing, social services, and other sectors)</li><li>• Public survey data</li><li>• Community voice</li><li>• Planning and reporting data</li></ul>

# Data is central to the Commission's role under the BHSA

- **Data collection and reporting:** CBH receives data from local and state entities (claims data; local integrated planning) and report data via legislative reports (Innovation Partnership Fund (IPF) and Full Service Partnership (FSP) evaluations) and data visualizations (dashboards, data briefs).
- **Consultation:** CBH provides input on variety of State efforts such as population-based prevention, stigma reduction, early intervention, and performance measurement for Behavioral Health Transformation (BHT).
- **Technical Assistance:** CBH supports local and State planning, training, and capacity building.

# CBH Data Framework



## Engage

Codesigned with stakeholders and community members.



## Inform

Promote transparency and public awareness of behavioral health services and trends.



## Plan

Data-informed decision making, funding, and prioritization.



## Evaluate

Track progress and outcomes to assess impact and lessons learned.



# CBH Data Capabilities and Products

# CBH Data Activities

Engage	Inform	Plan	Evaluate
<ul style="list-style-type: none"><li>• Interagency data partners</li><li>• Public stakeholders</li><li>• Communities</li></ul>	<ul style="list-style-type: none"><li>• Dashboard suite</li><li>• Reports</li><li>• Commission and Committee meetings</li></ul>	<ul style="list-style-type: none"><li>• CBH Grants</li><li>• Local planning</li><li>• Legislation</li><li>• Policy making</li></ul>	<ul style="list-style-type: none"><li>• BHSA (IPF, FSP)</li><li>• Commission initiatives</li><li>• Monitor BHT</li></ul>

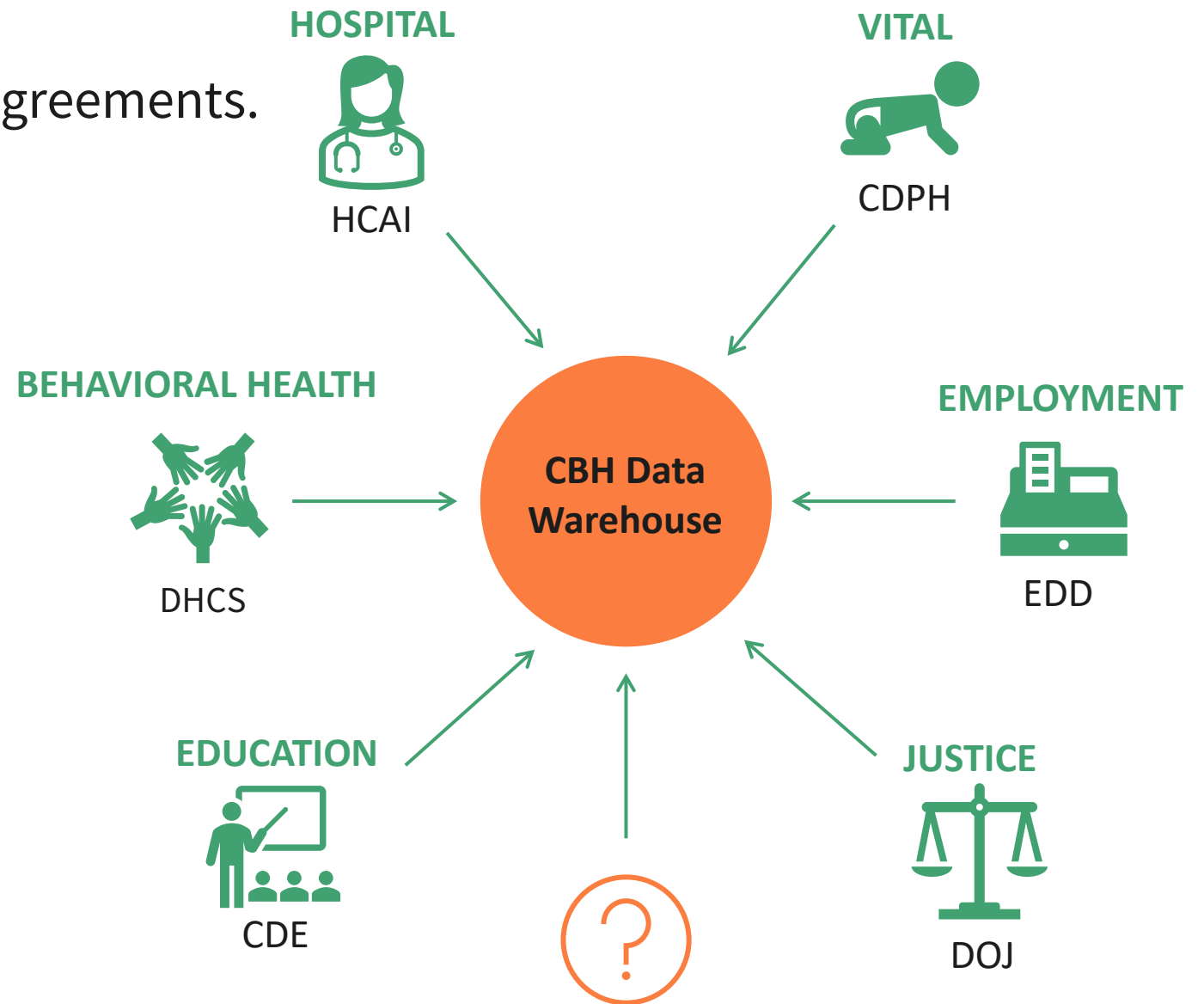
# CBH Data Warehouse

Data captured through interagency agreements.

**Breadth:** BHSOAC maintains linked data from six different agencies.

**Depth:** BHSOAC receives nearly complete extracts from its data sources.

**Longitudinal:** The data warehouse has multiple years of data, allowing trends to be measured over time.



# Diversifying data ensures analyses are comprehensive and contextual

## Evaluation

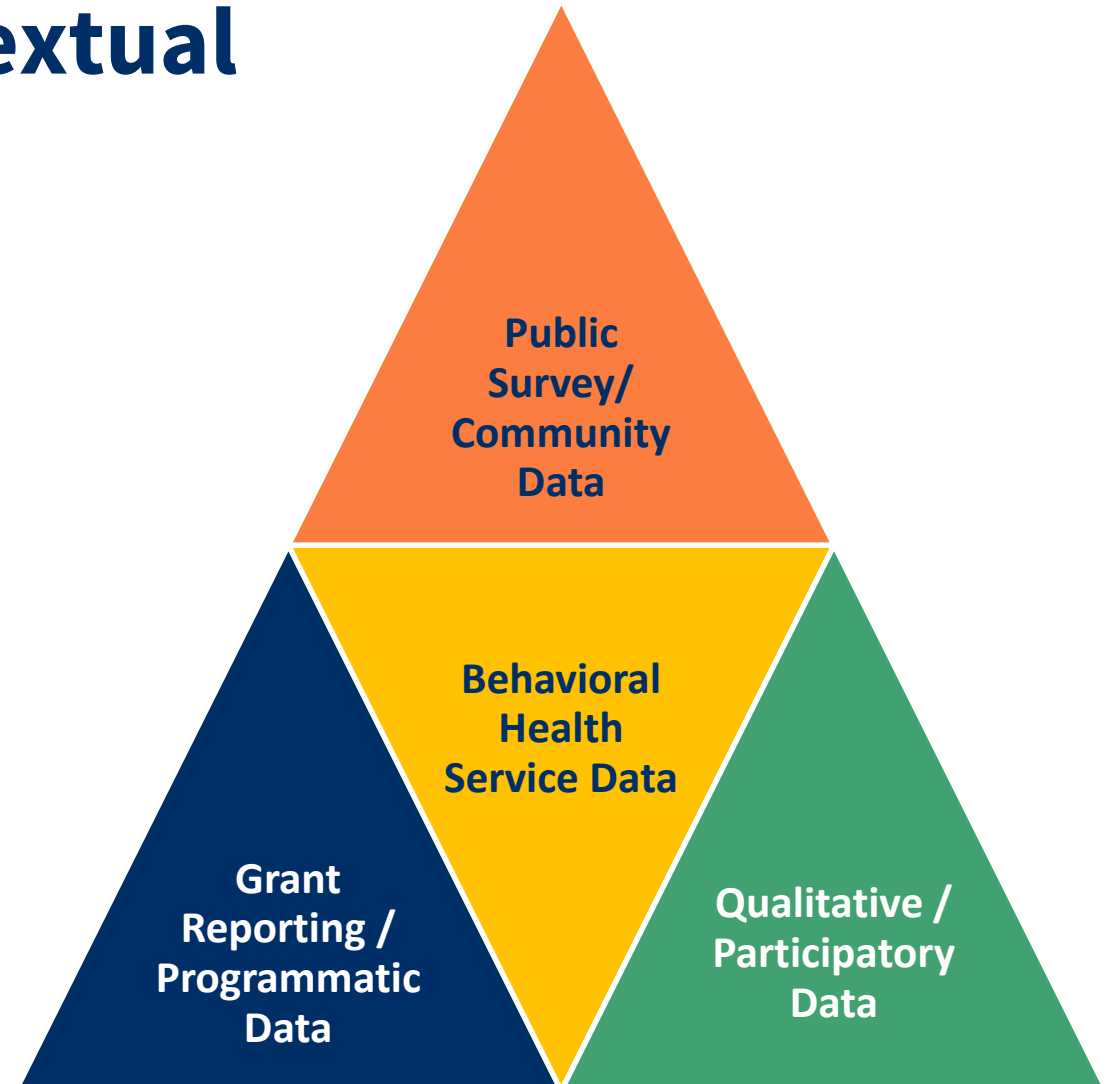
- Full Service Partnership
- Behavioral Health Student Services Act
- Mental Health Wellness Act (MHWA)

## Planning

- Innovation Partnership Fund
- Peer Respite (MHWA)

## Policy

- Impacts of Firearm Violence Report
- Universal Screening – Suicide Screening Legislation



# Public-facing data promotes awareness, transparency, and equity

## Transparency Suite – BHSOAC

Dashboards showing high-level statistics of county and statewide services, spending, and outcomes.

- Fiscal Transparency
- Allocation
- Criminal Justice
- CSI Demographics
- FSP Demographics
- Highlighting Disparities
- Suicide Incidence

# Ongoing engagement ensures data is valid, relevant, and inclusive

- **Collaboration:** Data products are codesigned with and vetted by key partners to ensure alignment with BHT goals and priorities.
  - Interagency data partners, stakeholders, and community members.
- **Public review:** 30-day public review process for new or updated dashboards.
- **Assess reach and impact:** Monitor data user activity and engagement metrics to inform dashboard improvements or discontinuation.
- **Data updates:** Data is updated routinely to ensure information is timely and responsive.



# Opportunities and Next Steps

# New Dashboards

## Population Behavioral Health Measures

### Population Health Dashboard:

<https://bhsoac.ca.gov/transparency-suite/pop-health/>

## Educational Characteristics of Youth Receiving MHSA Funded Services

### CDE Dashboard:

<https://bhsoac.ca.gov/transparency-suite/transparency-suite-education-characteristics-of-mental-health-consumers/>

# Dashboard Dissemination and Review

Prior to release, dashboards will undergo a structured engagement and review process that includes:

- Review and feedback from State partners: HHS, DHCS, CDE, and others
- One-month public release of draft dashboards for review and input.
- Dashboards revised based on public and partner feedback
- Dashboard publication and continuous quality assurance.

# Considerations

- Given the BHSA goals and mandates and considering DHCS' data strategy, where should the Commission focus its data work?
- How can the Commission's data capabilities be leveraged to focus in on the BHSA priority populations?
- What steps or considerations are necessary to ensure the Commission fulfills its data roles and mandates?