

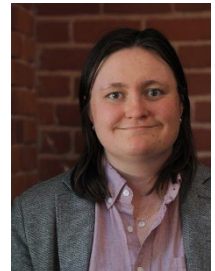
New Commission Staff Biographies

May 28, 2026

Tatum Allen

Information Technology Specialist I (LT – Cybersecurity Analyst)

Tatum Allen has four years of experience in information science, with expertise in cybersecurity, IT help desk support, data science, and technical instruction. In her current role as an Information Technology Specialist at the Commission, she supports the organization’s information security program by helping develop and maintain security policies, plans, and procedures, while also providing additional coverage for the IT Help Desk to support compliance with state and federal standards.



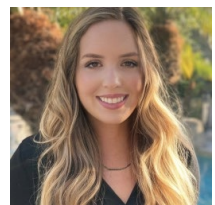
Before joining the Commission, Tatum worked at iD Tech Camps, where she taught computer science, artificial intelligence, game design, and cybersecurity through both group classes and one-on-one instruction. Her background bridges cybersecurity and education, with a focus on making technical topics accessible and actionable.

Tatum holds an M.S. in Cybersecurity and a B.S. in Computer Science from Fordham University. She has earned CompTIA Security+, an AI for Cybersecurity certification from Fordham, and is a CyberCorps Scholarship for Service (SFS) scholar committed to public service. She is recognized for clearly communicating complex technical concepts to diverse audiences and for producing precise, high-quality technical documentation, and she is passionate about using her skills to advance the Commission’s mission and strengthen outcomes for the public.

Hannah Barker

Research and Evaluation Project Manager

Hannah Elise Barker is a first-year doctoral student in Public Health Sciences at the University of California, Davis. She holds a Bachelor of Public Health from the University of Washington and a Master of Public Health from the University of North Carolina at Chapel Hill.



Hannah began her public health career as an AmeriCorps Health Resource Specialist in King County, Washington. During her graduate studies, she conducted research on campus mental health, peer support programs, and workplace health initiatives, particularly those addressing COVID-19 policies and support for newly hired workers. Her MPH capstone examined the mortality, morbidity, and economic costs of excessive drinking in Orange County, North

Carolina. For the past four years, Hannah has worked as a Senior Research Project Coordinator at the Johns Hopkins Bloomberg School of Public Health’s Institute for Global Tobacco Control, leading research and partnering with organizations in Vietnam, the Philippines, Indonesia, India, and China. Her work has focused on generating evidence to inform and strengthen global tobacco control policies.

Hannah is excited to join the Commission, where she looks forward to advancing understanding of behavioral health trends and supporting programs and policies at the program, community, and state levels.

Swapna Ganne

Analyst II

Swapna Ganne is a data analyst with over five years of experience working across insurance, public utilities, and retail domains. She holds a master’s degree in information science from Saint Louis University and most recently worked as a Senior Data Analyst at Nationwide Insurance. Her work focuses on data visualization, GIS mapping, and analytics to support decision-making and community-focused initiatives. She is excited to be part of the Commission and contribute to meaningful, data-driven impact.



Dane Leineke

Information Technology Specialist I

Dane Leineke serves as an Information Technology Specialist at the Commission, where he supports the agency's IT operations and infrastructure. His work contributes to maintaining secure, reliable systems and developing new data management systems to enable Commission staff to advance their mission, with a focus on collaboration, continuous improvement and user-centered technical support.



Before joining the Commission, Dane worked as a freelance IT specialist and systems administrator, where he planned and maintained cloud-based infrastructure, automated workflows and provided remote technical support to key clients. He brings a background in computer science and mathematics and is especially interested in building tools and systems to empower those around him.

Dane holds a Bachelor of Science in Computer Science from California State University, Sacramento and an Associate Degree in Mathematics from Folsom Lake College. He is committed to public service and empowering our local community, having previously collaborated with the Sacramento Area Beekeepers Association, and he's excited to grow professionally while contributing to the Commission's mission. On weekends, Dane enjoys exploring the Sacramento region’s blossoming food scene and shooting film photography of the local area.

Dominique Santiago

Analyst II

Dominique brings 10 years of experience in the behavioral health, customer service, clinical care, and social services field. In her current role as Analyst II at the Commission, Dominique provides support to the Communications, Legislation, External Affairs and Advocacy branch, contributing to partnering with diverse communities to shape and strengthen behavioral health resources and make a positive impact through collaboration and policy advancement.



Prior to joining the Commission, Dominique held roles in the private sector as a registered nurse working in employee health and in pediatrics and as a behavioral health technician providing direct support to children with autism spectrum disorder. Dominique has also previously worked in several California state agencies, including serving as a student assistant with the Department of State Hospitals in the Patient Management Unit and as a licensing program analyst with the Department of Social Services in the Community Care Licensing Division, Children's Residential Unit.

Dominique holds a Bachelor of Arts in Sociology from CSU Sacramento and a Bachelor of Science in Nursing from Chamberlain University and has holds both a California Registered Nurse license and a Public Health Nurse license. She is known for her collaborative approach, analytical skills and thoughtful leadership, and is passionate about work that supports children, families, and underserved communities.

On weekends, Dominique enjoys binge-watching Disney movies and exploring coffee shops. Dominique shares her home with her dog Bear, who loves walks to the park and eating treats.