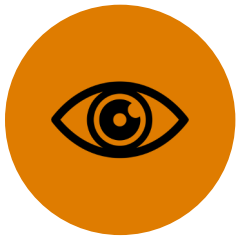


WestEd MHSSA Evaluation Partnership



About WestEd

The Resilient and Healthy Schools and Communities content area includes all of **the conditions for learning, development, and success** for school-aged children, youth, and adults. This area includes projects that are **often cross-sector**, including focus on mental health, health, child welfare, housing, and community safety and well-being.



Our **vision** is that one day, all children, regardless of background, identity, or circumstance will have the opportunities and conditions they need to learn and develop to their fullest potential.



Key Staff



Natalie Romer, PhD



Nicole Tirado-Strayer, PhD



Tom Hanson, PhD

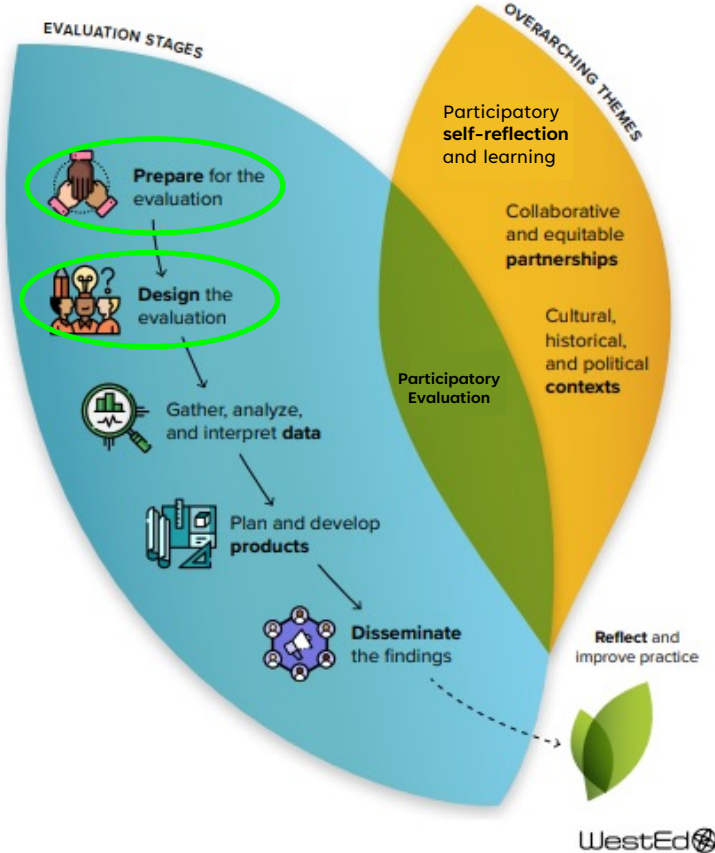


Amber Valdez, EdD



Nick Gage, PhD

Our Approach



Anti-Racist Evaluation Strategies: A Guide for Evaluation Team: <https://www.wested.org/resources/anti-racist-evaluation-strategies/>

Evaluation Goal: Transformational Change

Develop **performance metrics** that cut across systems

Understand the **impact of MHSSA**

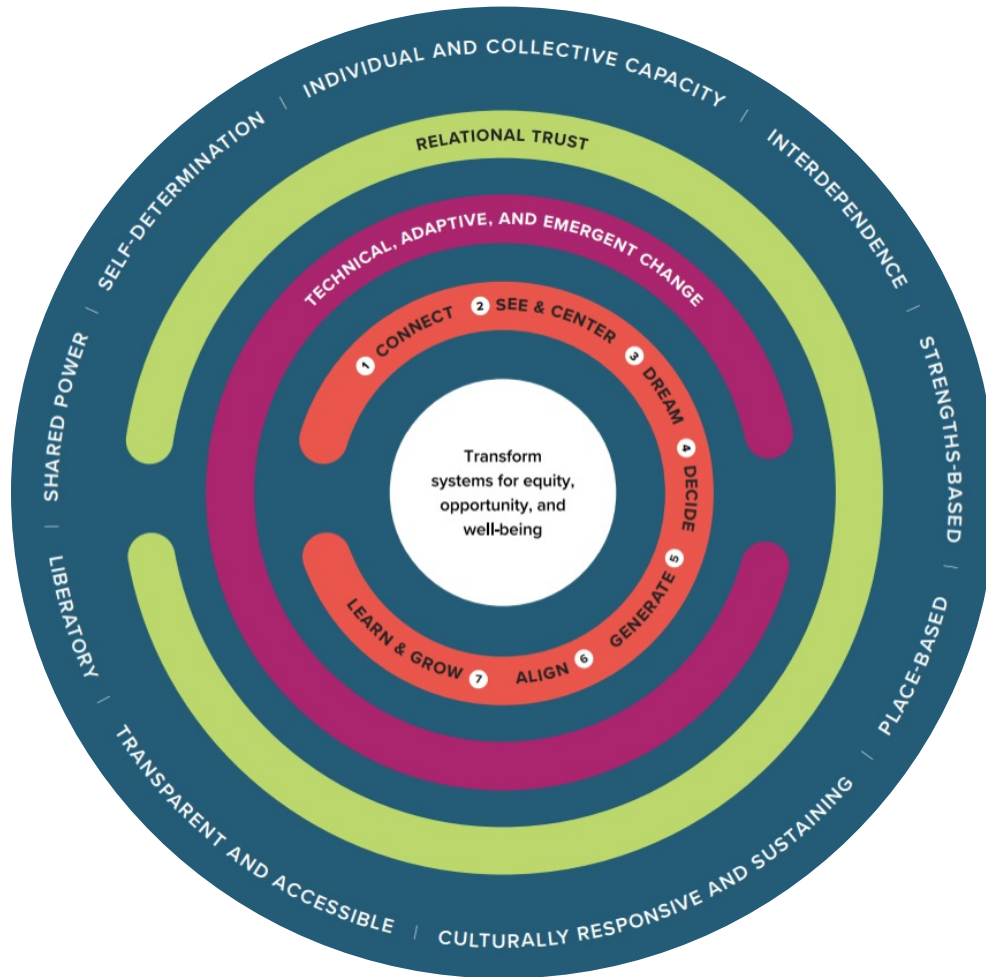
Understand **MHSSA implementation**

Understand the **different needs/experiences of student subgroups**

Build **comprehensive, effective, and sustainable school mental health systems** in local communities



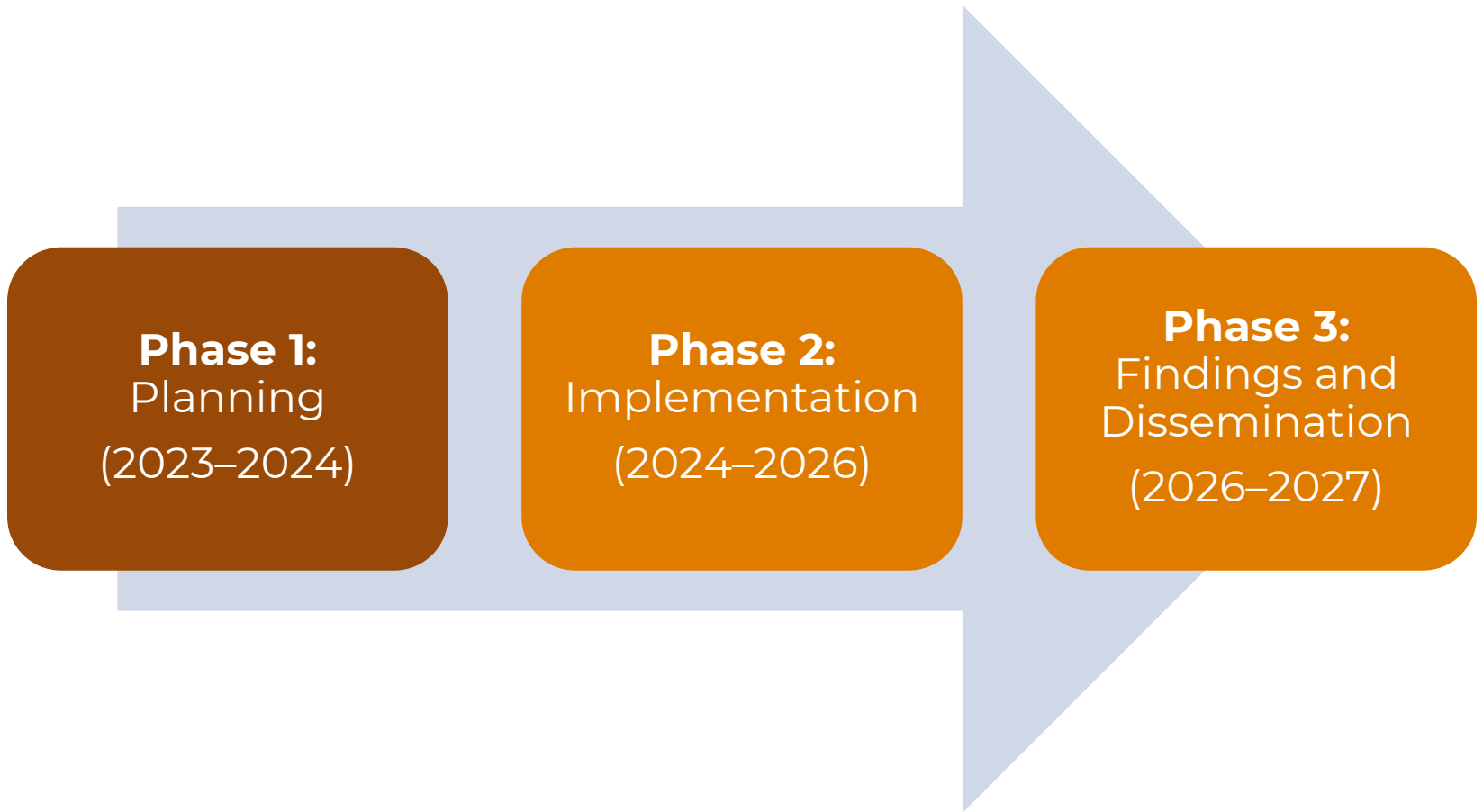
Participatory Systems Change



“Whether and how systems-change efforts are done in partnership with communities can determine the potential for liberating and lasting change.”

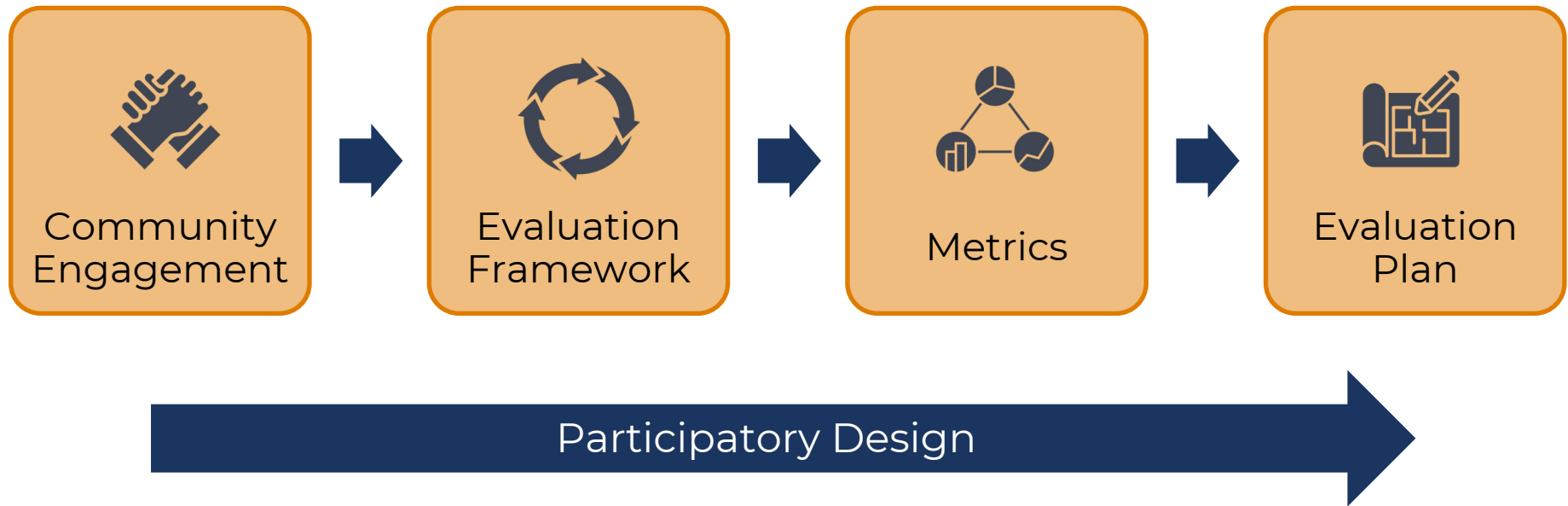
Participatory Systems Change for Equity: An Inquiry Guide for Child-, Youth-, and Family-Serving Agencies (WestEd, 2023)

MHSSA Evaluation Phases





Phase 1



Activity

What is one word that describes the impact that you hope your MHSSA initiative will have?



Join at: menti.com
Use code: 9128 - 0699

What is one word that describes the impact that you hope your MHSSA program will have?



Questions?

Natalie Romer, nromer@wested.org

Nicole Tirado-Strayer, ntirado@wested.org

