



The Statewide MHSSA Evaluation Plan

December 11, 2024

Today's Agenda

Background information

Community engagement

Conceptual model

Evaluation design

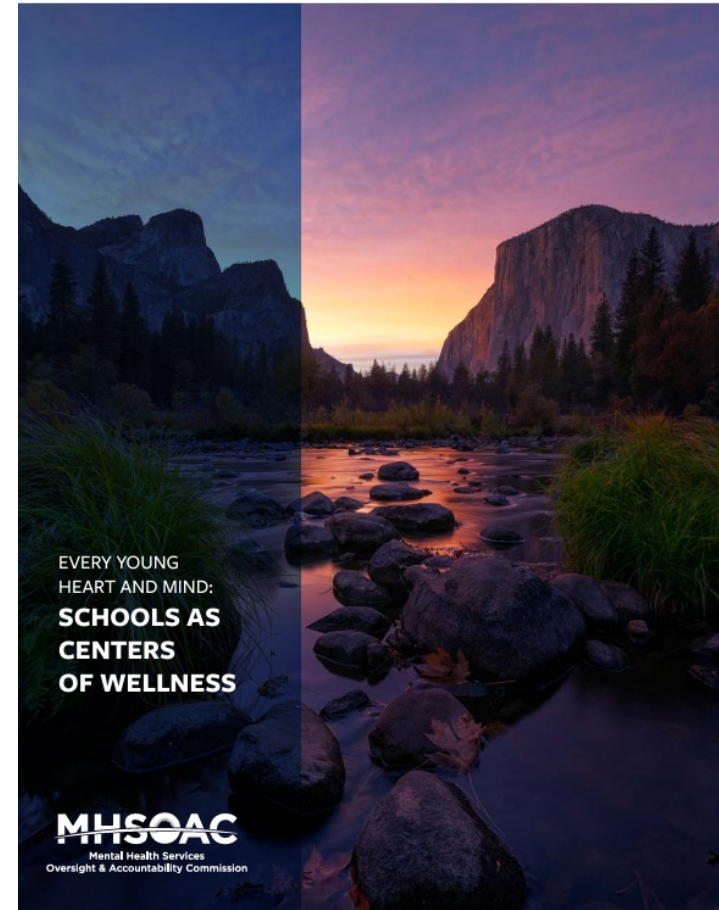
BACKGROUND INFORMATION

Mental Health Services Act

-
- The Mental Health Services Act (MHSA) levies a 1 percent tax on personal incomes above \$1 million and generates enough dollars each year to fund nearly 25 percent of the state's public mental health system.
 - The Mental Health Services Oversight and Accountability Commission (the Commission; 16 members) was formed to drive transformational change across the state's mental health system.
 - The Commission's primary function is to oversee the implementation of the MHSA.



—
**SCHOOLS AS
CENTERS OF
WELLNESS**



Mental Health Student Services Act (MHSSA) grants build and strengthen partnerships across behavioral health, education, and the community.



57

county behavioral health departments out of 58 counties



50

county offices of education/county superintendents of schools out of 58 counties



440

districts out of 1,021 districts statewide



2,161

K-12 schools out of 10,558 schools statewide



221

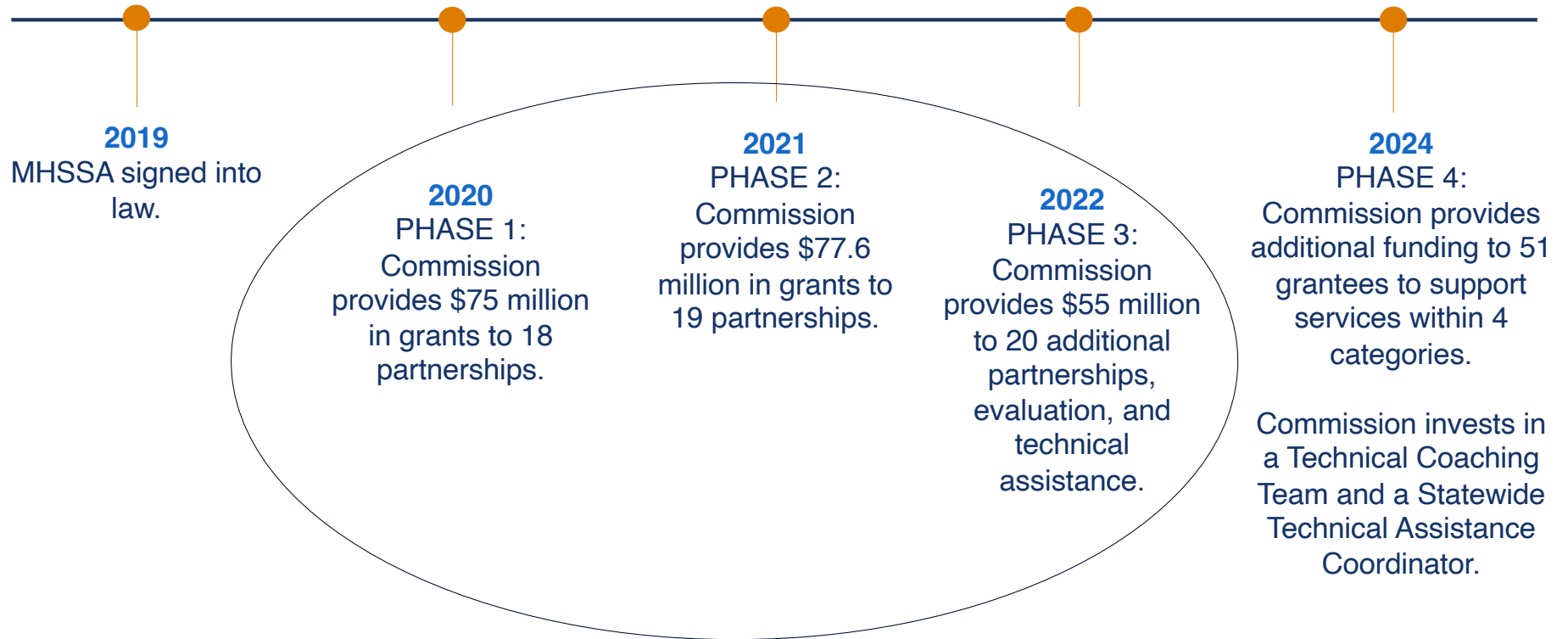
charter schools out of 2,164 schools statewide



39

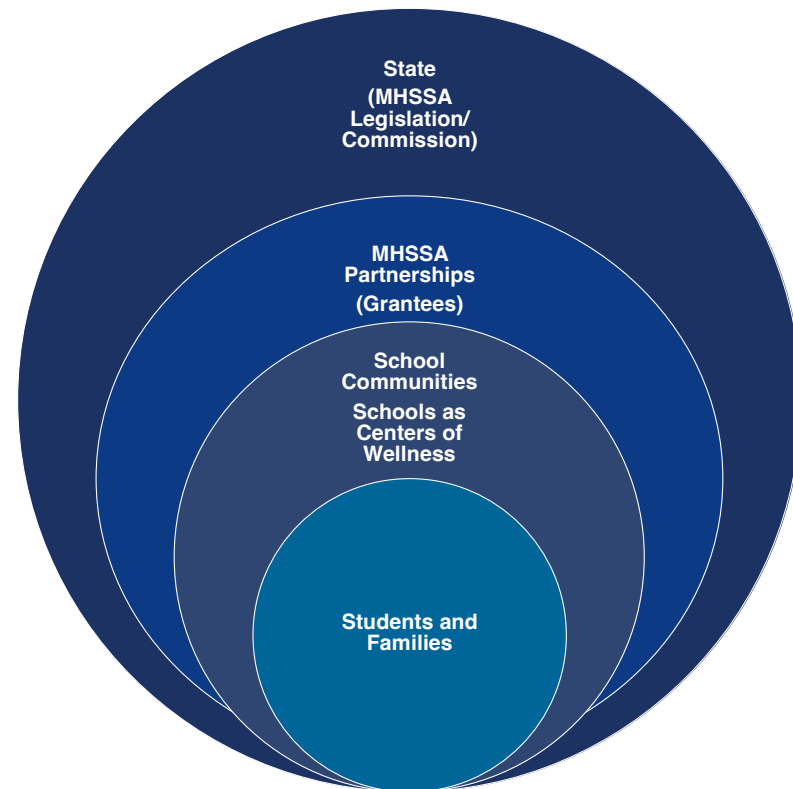
community-based organizations and other partners

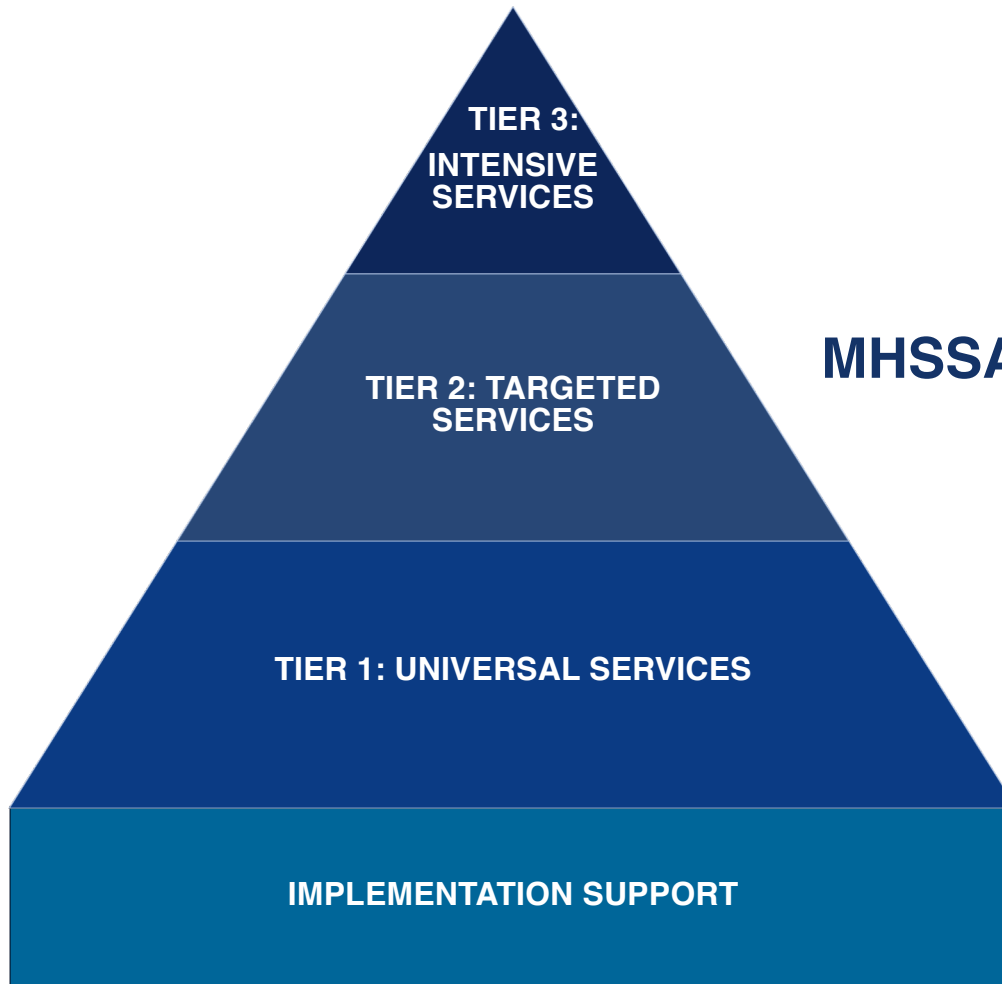
MHSSA Timeline



MHSSA Evaluation Challenges and Opportunities

- Capturing the MHSSA story using a participatory approach
- Alignment with legislation
- Systems approach
 - Heterogeneity of local programs
- Focus on MHSSA partnerships
- Consideration of larger context/landscape





MHSSA Activities and Services

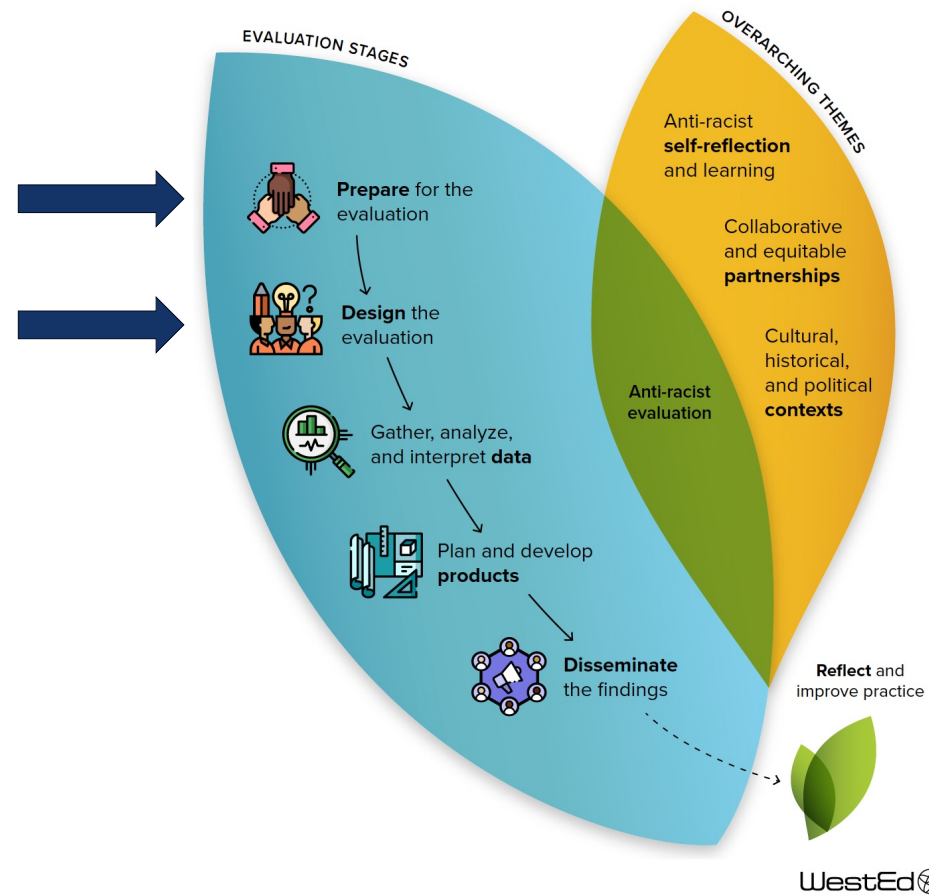




**COMMUNITY ENGAGEMENT TO INFORM
EVALUATION PLANNING**

Anti-Racist Evaluation Strategies: A Guide for Evaluation Teams

<https://www.wested.org/resource/anti-racist-evaluation-strategies/>

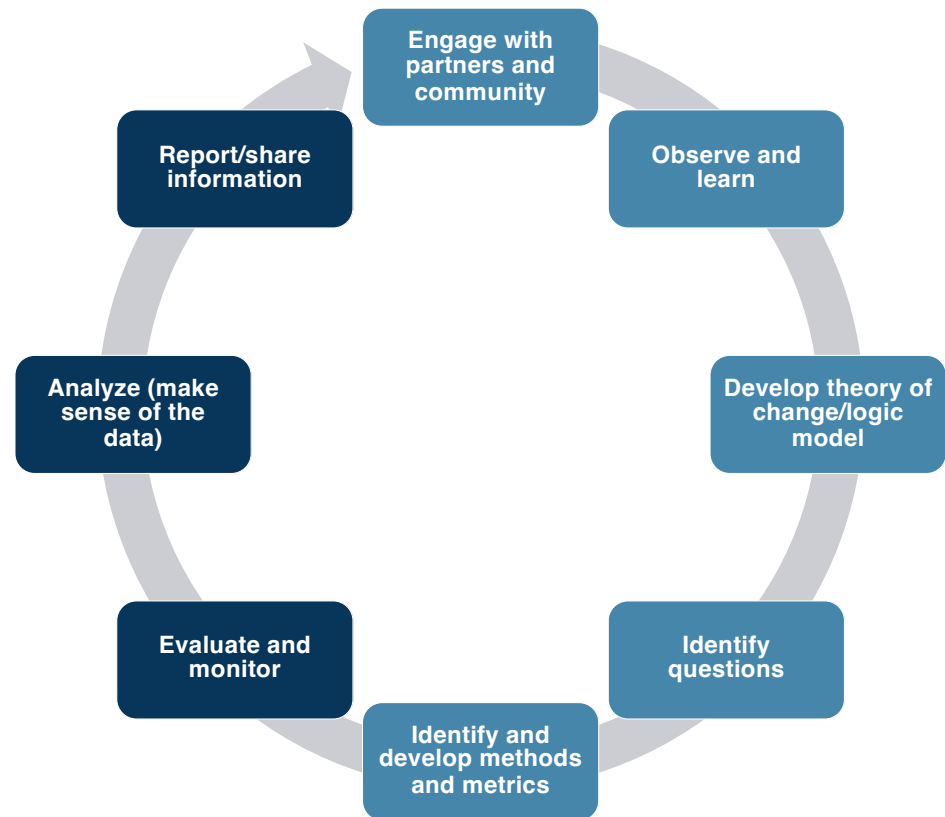


WestEd 

WestEd 
WestEd.org

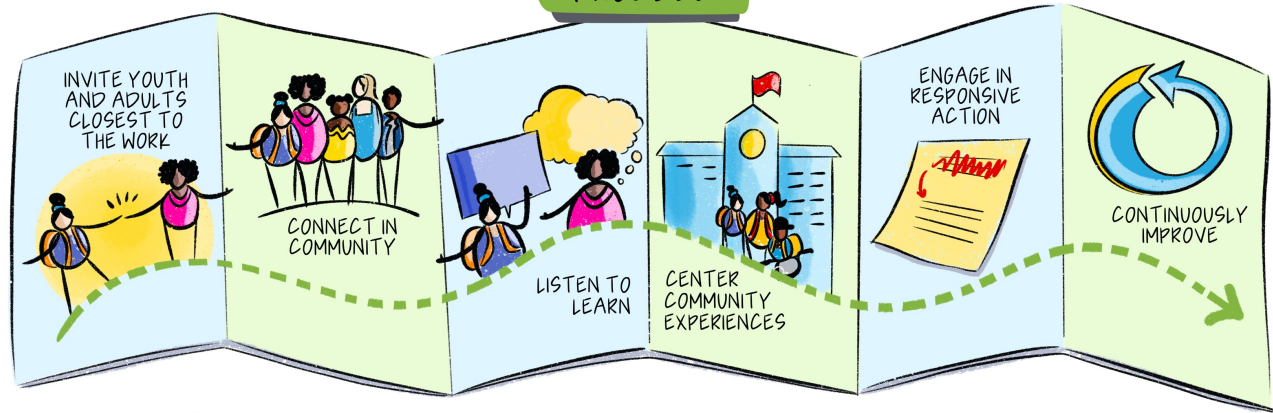
MHSOAC
Mental Health Services
Oversight & Accountability Commission

Participatory Evaluation Planning





PROCESS



WestEd

GRAPHIC BY RIO HOLADAY

Community Engagement Informing the MHSSA Evaluation Plan

Engagement activities

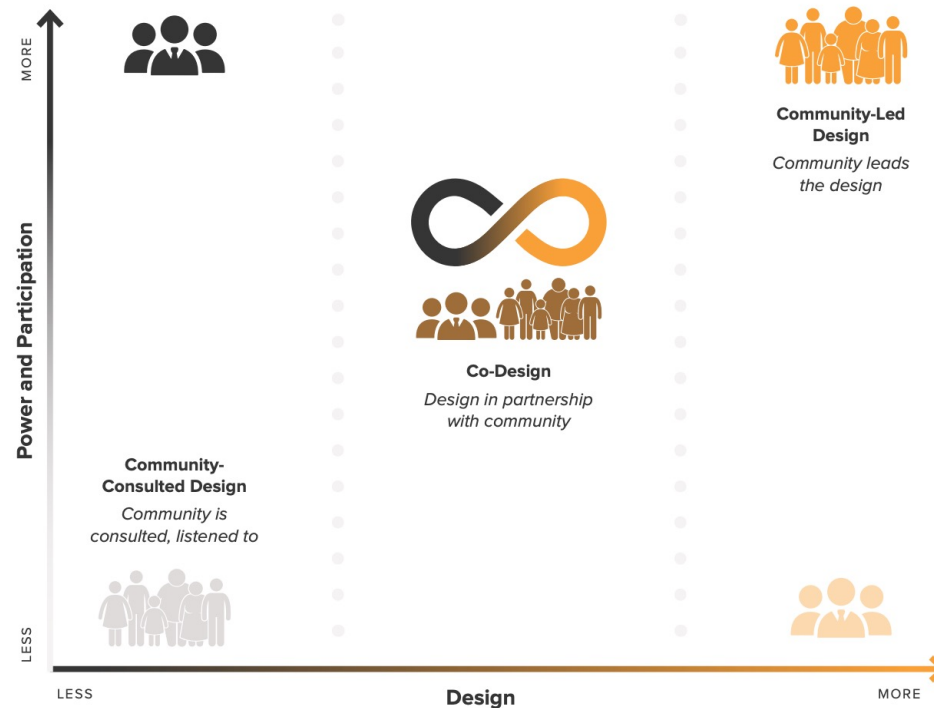
- 32 listening sessions
- 11 feedback sessions
- 3 surveys

Participants

- 293 grantee representatives
- 22 mental and behavioral health professionals implementing MHSSA-funded activities and services
- 42 youth partners
- 16 Youth Advisory Group members
- 106 families/caregivers
- 9 local evaluation teams (internal and external)

Continuum of Collaboration

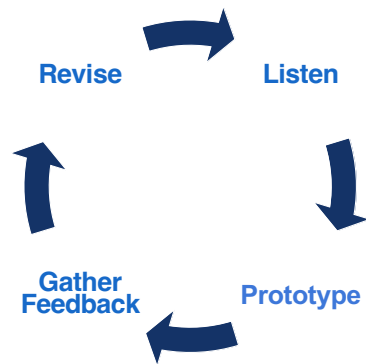
Co-design exists along a continuum of design approaches:



Continuum of Collaboration

Adapted from Human Design Practices Image (Bach et. al 2022) as adapted from Tania Anaisie of Beyna Design and equityXdesign

Co-Design: Engage with MHSSA Communities



- Students
- Parents and caregivers



- School-based educators and staff
- School district and county office of education system administrators
- School-based mental health/behavioral health (MH/BH) service providers



- County MH/BH system administrators
- State agency administrators



- Evaluators of MHSSA grantee programs

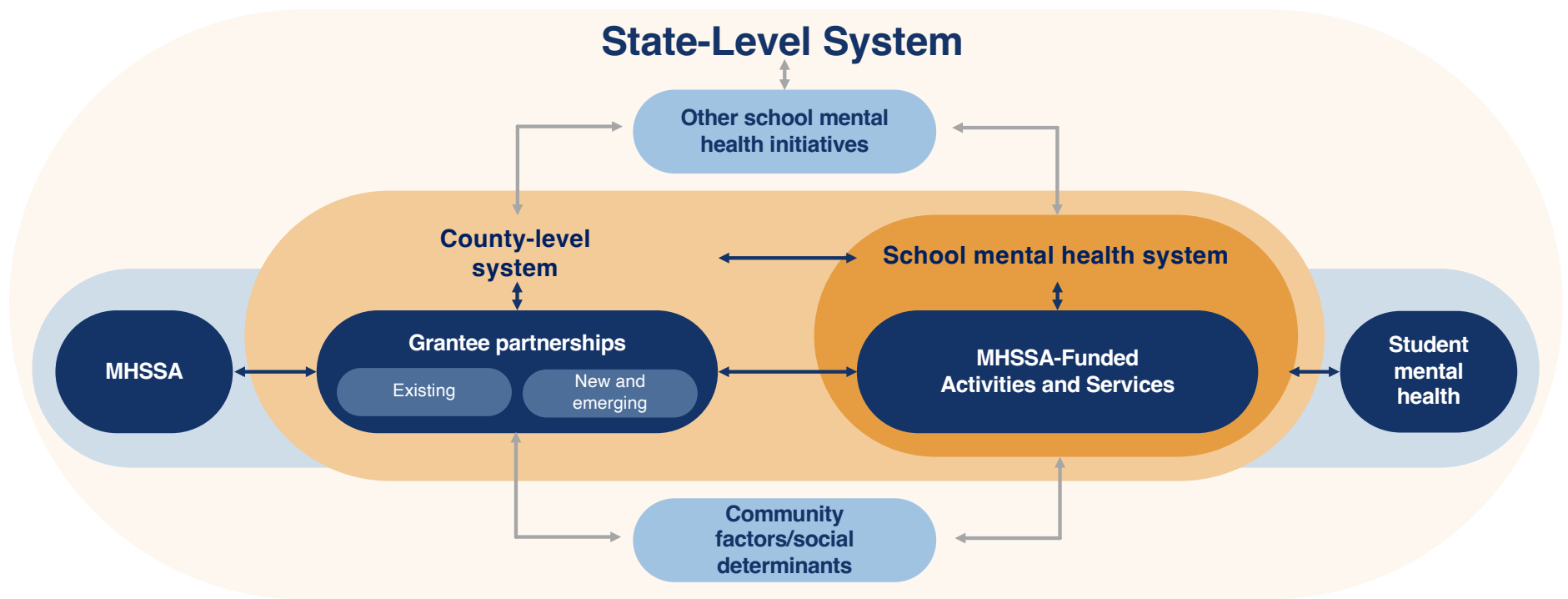
Select Community Insights Informing the Evaluation Design

Partners...

- value **having a voice** in the evaluation process and are committed to **ongoing collaboration**;
- emphasize that it is critical to understand and measure **variation in student mental health** across **different regions and populations**;
- want to **understand the school mental health system** in which MHSSA-funded activities and services were implemented to show how the **MHSSA builds upon the existing system** and **interacts with related initiatives** that were implemented concurrently;
- assert that the MHSSA is unique because it incentivizes interagency partnerships; they are proud of the work they do and want to **demonstrate using data** how local education agencies and county behavioral health departments are “**better together**”;
- want to engage with **meaningful and useful** data that could be used not only to satisfy reporting requirements but also to support **continuous improvement**;

MHSSA CONCEPTUAL MODEL

The MHSSA Conceptual Model



MHSSA EVALUATION DESIGN

The MHSSA Evaluation Goal: Transformational Change

-
- **Build comprehensive, effective, and sustainable school mental health systems in local communities.**
 - **Understand the different needs and experiences of student subgroups.**
 - **Understand MHSSA implementation and impact.**
 - **Develop performance metrics that cut across systems.**

Continuum of Evaluation: Telling the MHSSA Story



Community engagement



Contextual descriptive analyses



Process and systems change evaluation



Grantee partnership case study



Implementation and impact school case studies

Data Sources

New data

- Survey of MHSSA partnerships and school mental health system
- Grantee Partnership Planning Process
- Listening and sense-making sessions with key informants at county, district, and school levels
- Youth engagement
 - Listening circle, data equity walk, student panel

Existing data

- California Healthy Kids Survey
- California Longitudinal Pupil Achievement Data System
- US Census and other publicly available data on county and school community factors
- MHSSA grant monitoring data



Community Engagement

- collaborating with the MHSSA Youth Advisory Group
- training youth data collection partners
- collaborating with the Commission, grantees, other vested organizations, evaluators, and state agencies

Contextual Descriptive Analysis

-
- **Sample: Schools that administered the CHKS between 2022/23 and 2023/24 (n = 5,253)**
 - **Method:**
 - Multi-Level Model measuring outcomes from the California Healthy Kids Survey/California Longitudinal Pupil Achievement Data System and explore differences by county/school characteristics

Process and Systems Change Evaluation

-
- **Sample: All ($n = 57$)**
 - Grantee leads and teams
 - **Method:**
 - collecting and analyzing survey data from all grantee leads and teams about MHSSA partnerships and school mental health systems change
 - incorporating MHSSA grant monitoring results into evaluation communication and reporting
 - facilitating sense-making sessions with grantee leads and teams

Partnership Case Study

-
- **Sample: Systematically selected subsample**
 - Partnership Case Study ($n = 10$ grantee teams comprising county, district, school representation)
 - **Method:**
 - collecting and analyzing existing county- and district-level MHSSA-related documents and data on MHSSA partnerships, county mental health systems, and MHSSA-funded activities and services for the purpose of contextualizing each case study
 - facilitating a four-step partnership and school mental health systems change planning process with grantee partnership teams to collect, analyze, and plan using MHSSA Evaluation data

Implementation and Impact School Case Study

-
- **Systematically selected subsample**
 - School Case Study ($n = 12$ schools)
 - **Method:**
 - conducting interviews and listening sessions with key informants on the coordination, implementation, and impact of MHSSA-funded activities and services
 - co-facilitating youth engagement activities

Anticipated Implications of the MHSSA Evaluation

Increased understanding of

- California's evolving school mental health landscape,
- how MHSSA implementation has contributed to systems change within California's communities,
- behavioral health and education partnerships across the different levels of the system (school, district, county);
- the experiences and wisdom of those who are closest to school mental health systems, particularly youth; and
- the strengths of California's school communities and the unique approaches to serving those communities.

Increased opportunities for

- collaborative continuous improvement with key partners and interest holders and
- collective and individual self-reflection and learning.

Contact Us Any Time!

MHSSAeval@wested.org

Natalie Romer: nromer@wested.org

Nicole Tirado-Strayer: ntirado@wested.org