
Integrated Funding County Finance: Building Sustainable Financing for Children and Youth Support MHSSA 6/1/22

Michael Lombardo, Executive Director
Placer County Office of Education
Prevention Supports and Services
mlombardo@placercoe.org



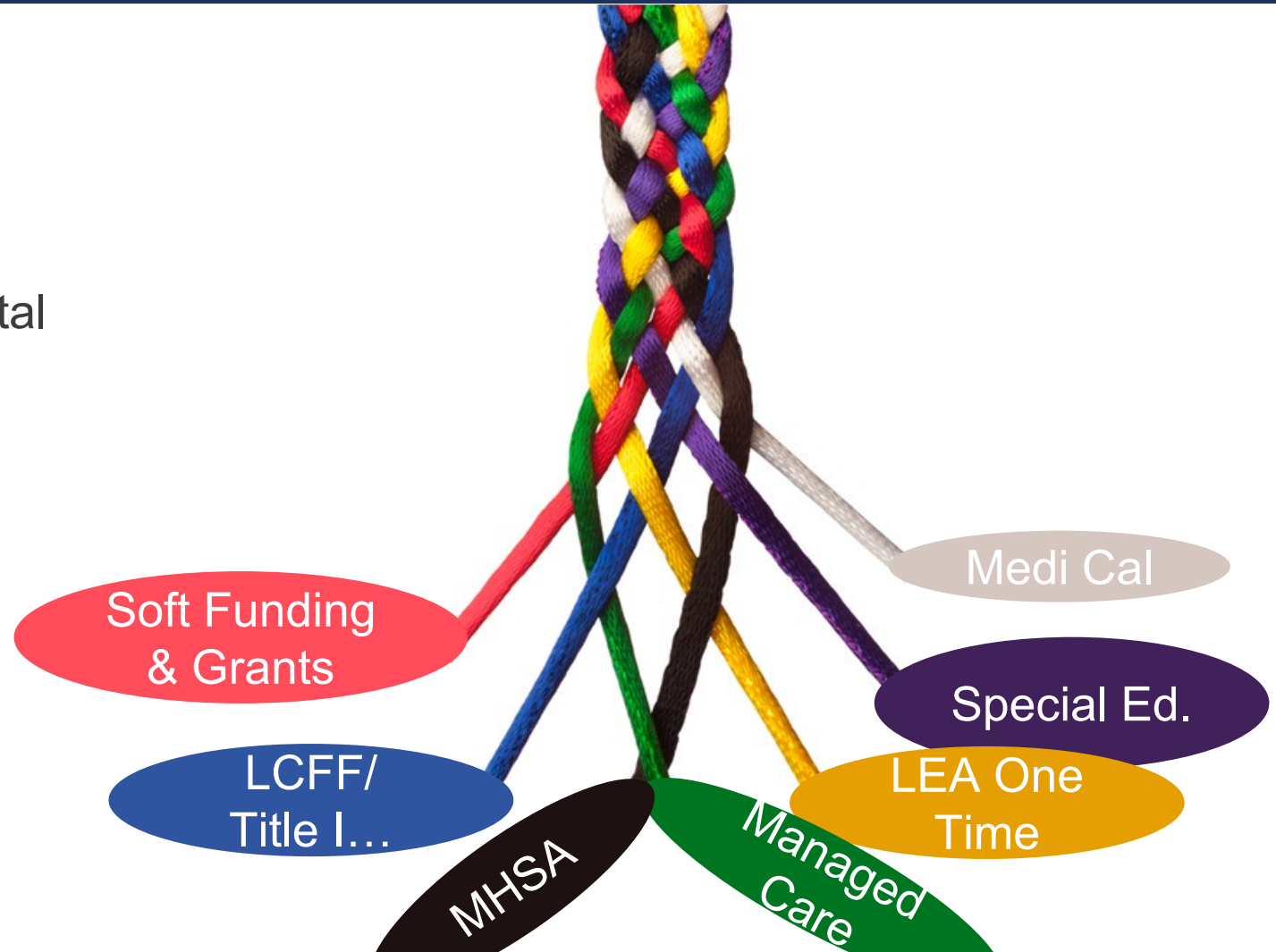
Opportunities for Sustainability / Reality Check

Funding
mental
health in
isolation
often results
in this....



Reality Check

- There is no single funding source to leverage that will fully fund an integrated mental health program.
- Communities must look at braided/blended funding

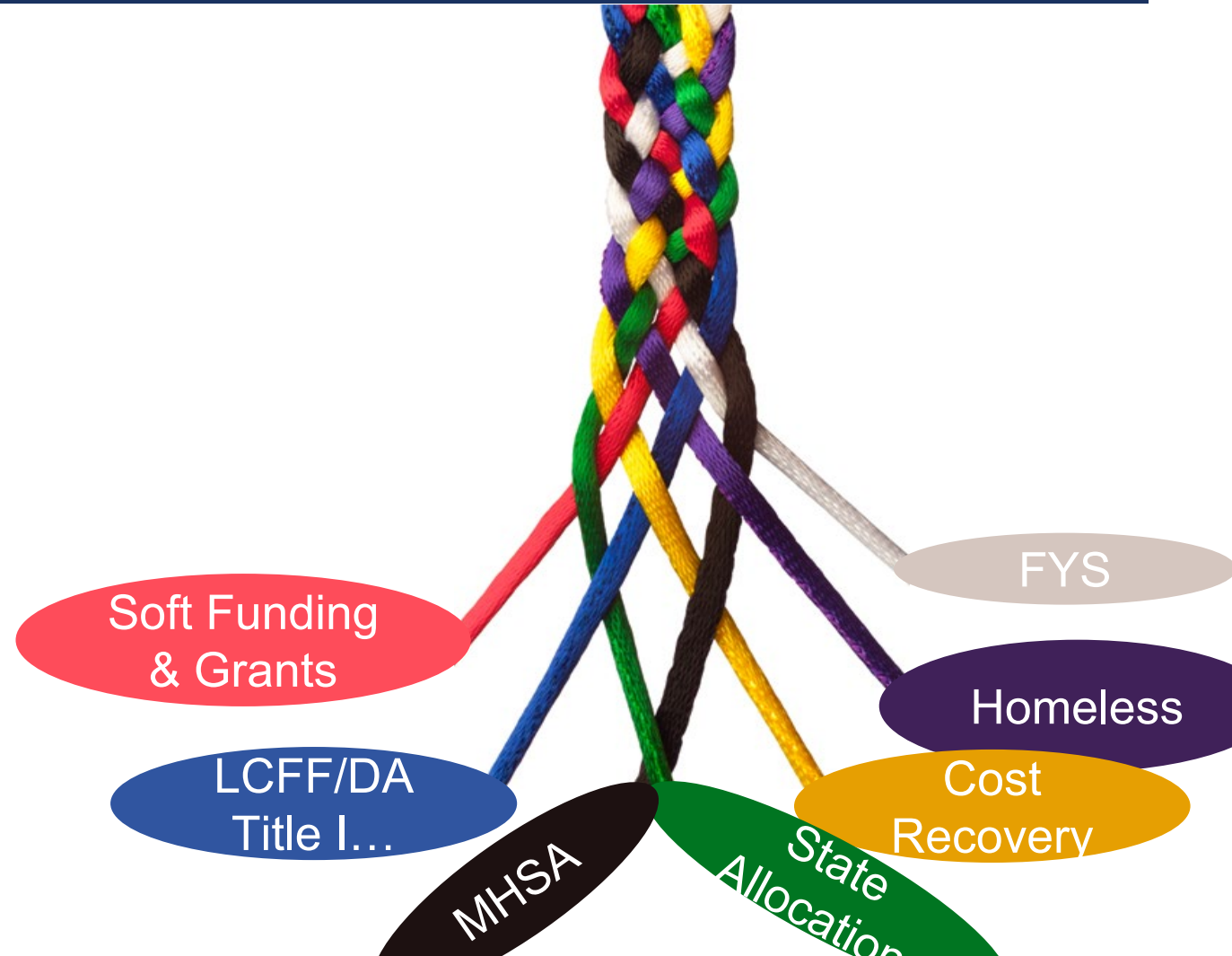


Thinking Beyond Mental Health Funding

Funding Sources

<u>Mental Health</u>	<u>State Allocated</u>	<u>Grants</u>
Triage	TUPE	ILP
MHSSA	FYS	McKinney-
Health Care	DA	Vento
Philanthropy	Core	Local -
MHSA	Cost-	Homeless
	Recovery	DOR
	CSEC	
	ESSR	

(Above a combination of Ongoing, but mostly One Time Grants)



What does Braided Funding Look Like:

35 Funding Streams

55 Staff

The image shows a large spreadsheet with 35 columns and 55 rows. The columns are labeled 'Revenue 001' through 'Revenue 035'. The rows are labeled with various staff names and positions. The table contains numerical data, likely representing funding amounts. The text '35 Funding Streams' is written in red across the top of the columns, and '55 Staff' is written vertically in red on the left side of the rows. The spreadsheet is mostly blue and white, with some red text.

What does Braided Funding Look Like (Sample Version)

PCN #	Title	Dates	Name	FTE Auth	FY Total Salary & Benefit Cost	Resource XXXX		Resource XXXX		Resource XXXX		Resource XXXX		Resource XXXX		COMBINED TOTAL	ERROR CHECK	
						22-23 Orig. Budget	22-23 Orig. Budget	22-23 Orig. Budget	22-23 Orig. Budget	22-23 Orig. Budget	22-23 Orig. Budget	22-23 Orig. Budget	22-23 Orig. Budget					
						85,000	61,000	25,000	500,000	200,000	871,000							
1258	Family/Youth Community Liaison		Adams John	1.00	100,000	0.00%	-	0.00%	-	0.00%	-	0.00%	-	0.00%	-	0.00%	NOT 100%	100,000
3654	Program Manager		Alexander, Susie	1.00	100,000	0.00%	-	0.00%	-	0.00%	-	0.00%	-	0.00%	-	0.00%	NOT 100%	100,000
9526	Program Manager		Anderson, Bart	1.00	100,000	0.00%	-	0.00%	-	0.00%	-	0.00%	-	0.00%	-	0.00%	NOT 100%	100,000
98526	Senior Director		Armstrong, Keith	1.00	100,000	0.00%	-	0.00%	-	0.00%	-	0.00%	-	0.00%	-	0.00%	NOT 100%	100,000
7526	Program Manager		Abbott, Jenny	1.00	100,000	0.00%	-	0.00%	-	0.00%	-	0.00%	-	0.00%	-	0.00%	NOT 100%	100,000
3258	Mental Health Specialist		Austin, Walker	1.00	100,000	0.00%	-	0.00%	-	0.00%	-	0.00%	-	0.00%	-	0.00%	NOT 100%	100,000
1256	Mental Health Specialist		Baker, Simone	1.00	100,000	0.00%	-	0.00%	-	0.00%	-	0.00%	-	0.00%	-	0.00%	NOT 100%	100,000
4526	Family/Youth Community Liaison		Bailey, Jessica	1.00	100,000	0.00%	-	0.00%	-	0.00%	-	0.00%	-	0.00%	-	0.00%	NOT 100%	100,000
3255	Administrative Secretary		Bell, Courtney	1.00	100,000	0.00%	-	0.00%	-	0.00%	-	0.00%	-	0.00%	-	0.00%	NOT 100%	100,000
1236	Vocational Specialist		Brown, Rex	1.00	100,000	0.00%	-	0.00%	-	0.00%	-	0.00%	-	0.00%	-	0.00%	NOT 100%	100,000
4569	Student Support Practitioner		Campbell, Tiffany	1.00	100,000	0.00%	-	0.00%	-	0.00%	-	0.00%	-	0.00%	-	0.00%	NOT 100%	100,000
7896	Family/Youth Community Liaison		Carter, Tristan	1.00	100,000	0.00%	-	0.00%	-	0.00%	-	0.00%	-	0.00%	-	0.00%	NOT 100%	100,000
5412	Bilingual Community Liaison		Collins, Terri	1.00	100,000	0.00%	-	0.00%	-	0.00%	-	0.00%	-	0.00%	-	0.00%	NOT 100%	100,000
8547	Family/Youth Community Liaison		Cook, Greg	1.00	100,000	0.00%	-	0.00%	-	0.00%	-	0.00%	-	0.00%	-	0.00%	NOT 100%	100,000
9856	Mental Health Specialist		Davis, Duncan	1.00	100,000	0.00%	-	0.00%	-	0.00%	-	0.00%	-	0.00%	-	0.00%	NOT 100%	100,000
3256	Coordinator		Dixon, Rebecca	1.00	100,000	0.00%	-	0.00%	-	0.00%	-	0.00%	-	0.00%	-	0.00%	NOT 100%	100,000
3698	Mental Health Specialist		Dunn, Penelope	1.00	100,000	0.00%	-	0.00%	-	0.00%	-	0.00%	-	0.00%	-	0.00%	NOT 100%	100,000
8963	Mental Health Specialist		Doyle, Doug	1.00	100,000	0.00%	-	0.00%	-	0.00%	-	0.00%	-	0.00%	-	0.00%	NOT 100%	100,000
25632	Program Manager		Davidson, Stacey	1.00	100,000	0.00%	-	0.00%	-	0.00%	-	0.00%	-	0.00%	-	0.00%	NOT 100%	100,000
3578	Employment Placement Specialist		Ferguson, Jim	1.00	100,000	0.00%	-	0.00%	-	0.00%	-	0.00%	-	0.00%	-	0.00%	NOT 100%	100,000
3695	Student Support Practitioner-PCOE		Franklin, Mary	1.00	100,000	0.00%	-	0.00%	-	0.00%	-	0.00%	-	0.00%	-	0.00%	NOT 100%	100,000
3214	Family/Youth Community Liaison		Freeman, Carter	1.00	100,000	0.00%	-	0.00%	-	0.00%	-	0.00%	-	0.00%	-	0.00%	NOT 100%	100,000
25639	Mental Health Coordinator		Gibson, Beth	1.00	100,000	0.00%	-	0.00%	-	0.00%	-	0.00%	-	0.00%	-	0.00%	NOT 100%	100,000
951	Mental Health Specialist		Griffen, Nancy	1.00	100,000	0.00%	-	0.00%	-	0.00%	-	0.00%	-	0.00%	-	0.00%	NOT 100%	100,000
1245	Student Support Practitioner		Gonzalez, Jose	1.00	100,000	0.00%	-	0.00%	-	0.00%	-	0.00%	-	0.00%	-	0.00%	NOT 100%	100,000
1228	Family/Youth Community Liaison		Harrison, Joanne	1.00	100,000	0.00%	-	0.00%	-	0.00%	-	0.00%	-	0.00%	-	0.00%	NOT 100%	100,000
6521	Staff Secretary III		Hayes, Kacey	1.00	100,000	0.00%	-	0.00%	-	0.00%	-	0.00%	-	0.00%	-	0.00%	NOT 100%	100,000
8541	Student Support Practitioner		Jacobson, Diane	1.00	100,000	0.00%	-	0.00%	-	0.00%	-	0.00%	-	0.00%	-	0.00%	NOT 100%	100,000
7526	Mental Health Specialist		Jennings, Phylcia	1.00	100,000	0.00%	-	0.00%	-	0.00%	-	0.00%	-	0.00%	-	0.00%	NOT 100%	100,000
95412	Executive Director		Kennedy, Paul	1.00	100,000	0.00%	-	0.00%	-	0.00%	-	0.00%	-	0.00%	-	0.00%	NOT 100%	100,000
						-	-	-	-	-	-	-	-	-	-	-		3,000,000

Opportunities for Sustainability (Key Features)

- Create spaces where:
 - “Every adult on campus using principles of strength based and engaged relationships.
 - Every adult understands and implements Tier I: Early Intervention, Stigma Reduction, and Empathetic Support for children who may be experiencing mental health needs
 - Building Multi-Tier System of Support is Critical
 - Integrated Behavior Health Tiered System (PBIS)

Opportunities for Sustainability

- Seek alternate “Soft Funding” sources:

- Soft Funding:

- Community donations – materials, family resources and more (\$25,000)

- Community Donated Supplies

Furniture, gift cards, clothing, food.....

- Community Benefit Health Care Organizations

- (Partially funded expansion of Wellness Centers (Sutter Health \$500,000 + LEA \$\$\$)
- Contributed to launch of Placer County Handle with Care (Sutter Health \$150,000)
- Training and Coaching (Over last eight years Kaiser \$250,000)

Opportunities for Sustainability

- Collaborate with Managed Care Providers “Student Behavioral Health Incentive Program (SBHIP)”
 - \$389 million in incentive payments paid to Medi Cal Managed Care Plans (MCPs)
 - Build infrastructure, partnerships, and capacity to provide a sustainable school behavioral health platform
 - Fourteen Recommendations #9 “Technical Assistance Support for Contracts and Agreements: Medi Cal managed care plans and/or county BH departments execute contracts with schools to provide preventive, early intervention, and BH services.” (Final Stakeholder Mtg PowerPoint)
 - SBHIP Allocation by County (Click Here)

Opportunities for Sustainability

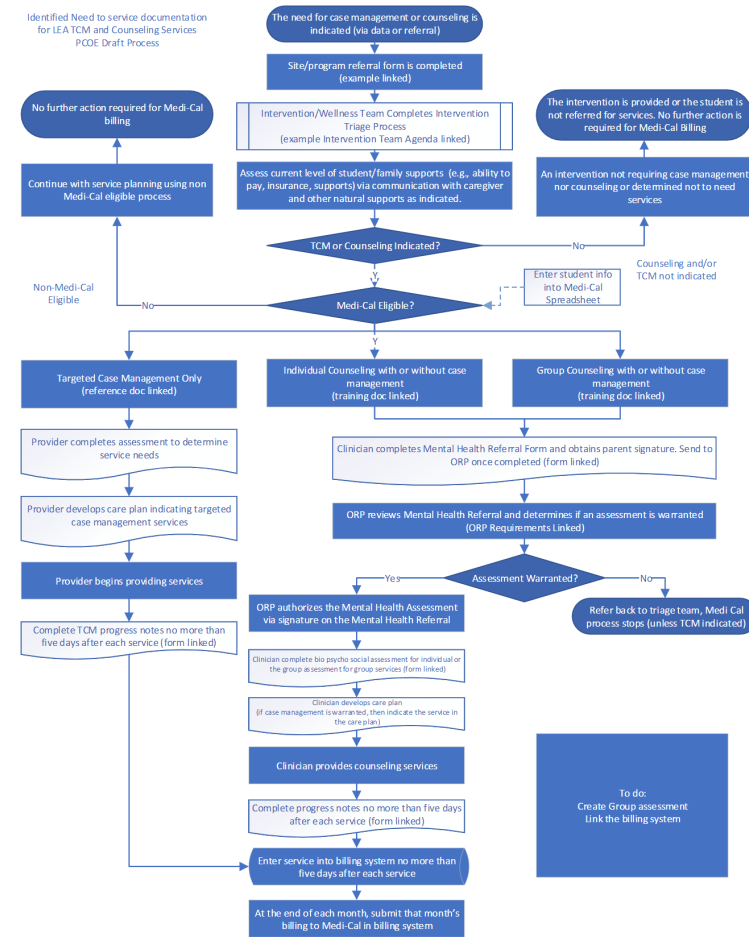
- Partner with County Behavioral Health to explore braiding funding sources such as:
 - Early and Periodic Screening, Diagnostic and Treatment (EPSDT)
 - Placer will explore a pilot in High Medi Cal Eligible School Site
 - Mental Health Services Act (MHSA)
 - Placer County CSOC supplemental funding to help sustain implementation cost
 - Placer CSOC supports training and coaching for school staff in trauma informed PBIS and county wide Suicide Prevention Training

Opportunities for Sustainability

- LEA Medi Cal Funding:
 - Primary Types:
 - (Medi-Cal Administrative Activities, & Local Educational Agency Medi-Cal (LEA Program Targeted Case Management))
 - PCOE activities:
 - Evaluate all staff for use of **Administrative Medi Cal (240 Staff = \$80,000 quarterly)**
 - Designed a Process Map for **LEA Targeted Case Management TCM** and Pilot Project
 - Goal:
 1. Identify process and forms necessary for TCM
 2. Determine number of Medi Cal Eligible Students using Mental Health Supports
 3. Identify quality improvement and documentation strategies

Evaluate Process for LEA Medi-Cal



Develop a process map for workflow to identify barriers, trigger points and detailed process for LEA Medi Cal billing



Opportunities for Sustainability

- The California State Plan Amendment 15-021 was approved on April 27, 2020
 - Local Educational Agency Medi-Cal Billing Option Program (LEA BOP)
 - “Expands reimbursements to include covered services under an Individualized Health and Support Plan (IHSP), which will allow LEAs to receive reimbursement for eligible beneficiaries without an Individualized Education Plan (IEP) or Individualized Family Services Plan (IFSP), resulting in increased services for Medi-Cal eligible general education students.”

Opportunities for Sustainability

- Early Related Mental Health Services (ERMHS) Expansion & Senate Bill 98 ([Link Here](#))
 - Starting in 20-21, ERMHS funds can be used for mental health related services, including:
 - Out of home residential services for emotionally disturbed students
 - Counseling and guidance service (including counseling, personal counseling, and parent counseling and training)
 - Psychological services
 - Social work services
 - Behavioral interventions (ADDED) 
 - Other mental health related services not required by IDEA (ADDED) 

Opportunities for Sustainability

- Local Control Funding Formula (LCFF)
 - School Climate & Suspension/Expulsion Rates
- Title I Funding
 - Part A: Title I, Students who are economically disadvantaged, students with disabilities, migrant students or English learners
 - Part B: School-aged children with disabilities
- SEL Cal Hope
 - Allocation to each COE in CA (SCOPE Lead in Northern CA & OCDE in Southern CA)
- Elementary and Secondary School Emergency Relief Fund (ESSER) (Ends 2024)
 - 16 allowable uses #10: Providing mental health services and supports, including through the implementation of evidence-based full-service community schools.
 - PCOE hired a Mental Health Coordinator to support implementation, exploration and sustainability of Mental Health programs

Opportunities for Sustainability

- *****Early Childhood Education*****
 - AB-2698 “California state preschool programs: general child care and development programs: mental health consultation services: adjustment factors.”
 - Assembly Bill 2698 — Effective January 1, 2019
 - “Assembly Bill 2698 allows contractors to receive an additional adjustment of 0.05 for children served in classrooms where early childhood mental health consultation (ECMHC) services are provided, and are served in a California State Preschool Program (CSPP), infants and toddlers 0 to 36 months of age and are served in General Child Care Development Programs (CCTR), and children zero to five years of age and are served in a family child care home (FCCH) education network setting funded by a CCTR contract.”
 - PCOE uses \$44,000 to offset the cost of Mental Health and Wellness Coordinator ([Link to CDE Information Letter Here](#))

Resources

- School Mental Health Funding - California School Based Health Alliance ([Link](#))
- Public Funding for School-Based Mental Health Programs (CSHA) ([Link](#))
- CA-School-Mental-Health-Implementation-Guide - MHSOAC ([Link](#))
- Interconnected Systems Framework ([Link](#))
- Practical Guide for Financing Social, Emotional, and Mental Health in Schools – Breaking Barriers ([Link](#))
- Guidance to States and School Systems on Addressing Mental Health – SAMHSA ([Link](#))
- Local Educational Agency Medi-Cal Billing Option ([Link](#))

Contact Information

Michael Lombardo, Placer Office of Education, mlombardo@placercoe.org



Questions and Reflections

Michael Lombardo, Executive Director
Placer County Office of Education
Prevention Supports and Services
mlombardo@placercoe.org