



Striving  
for  
Zero

## Striving for Zero Rural County Collaborative Meeting 1, October 8, 2021

Support for people at risk for suicide or those supporting people at risk is available by calling the **National Suicide Prevention Lifeline** 1-800-273-TALK (8255)

Apoyo y ayuda para personas a riesgo de suicidarse o para las personas que los apoyan está disponible llamando al **National Suicide Prevention Lifeline** 1-888-682-9454

# Welcome!

Please add your county name to your display name and introduce yourself in the chat.

We will share the slides and recording with you.

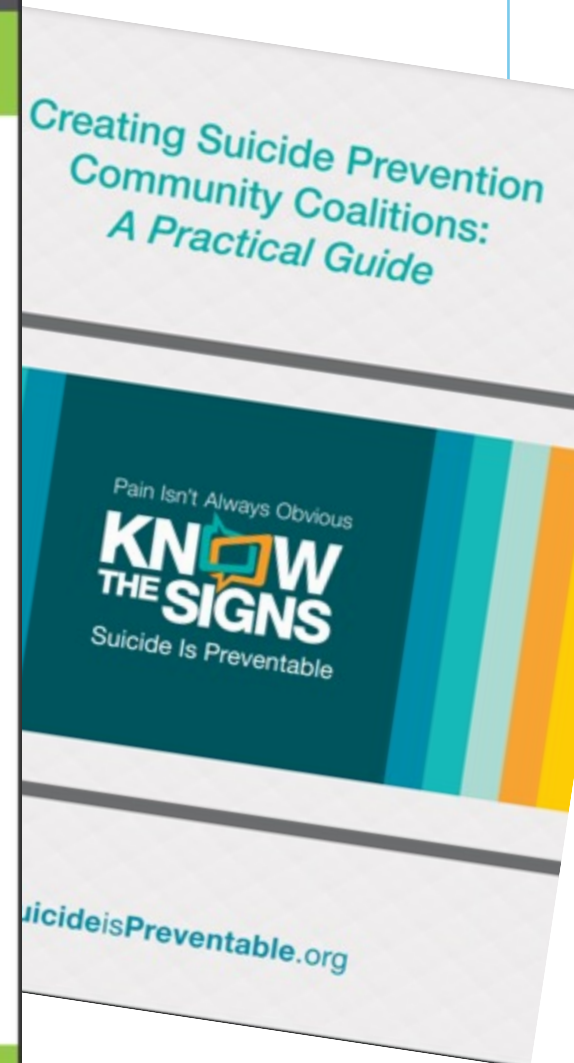
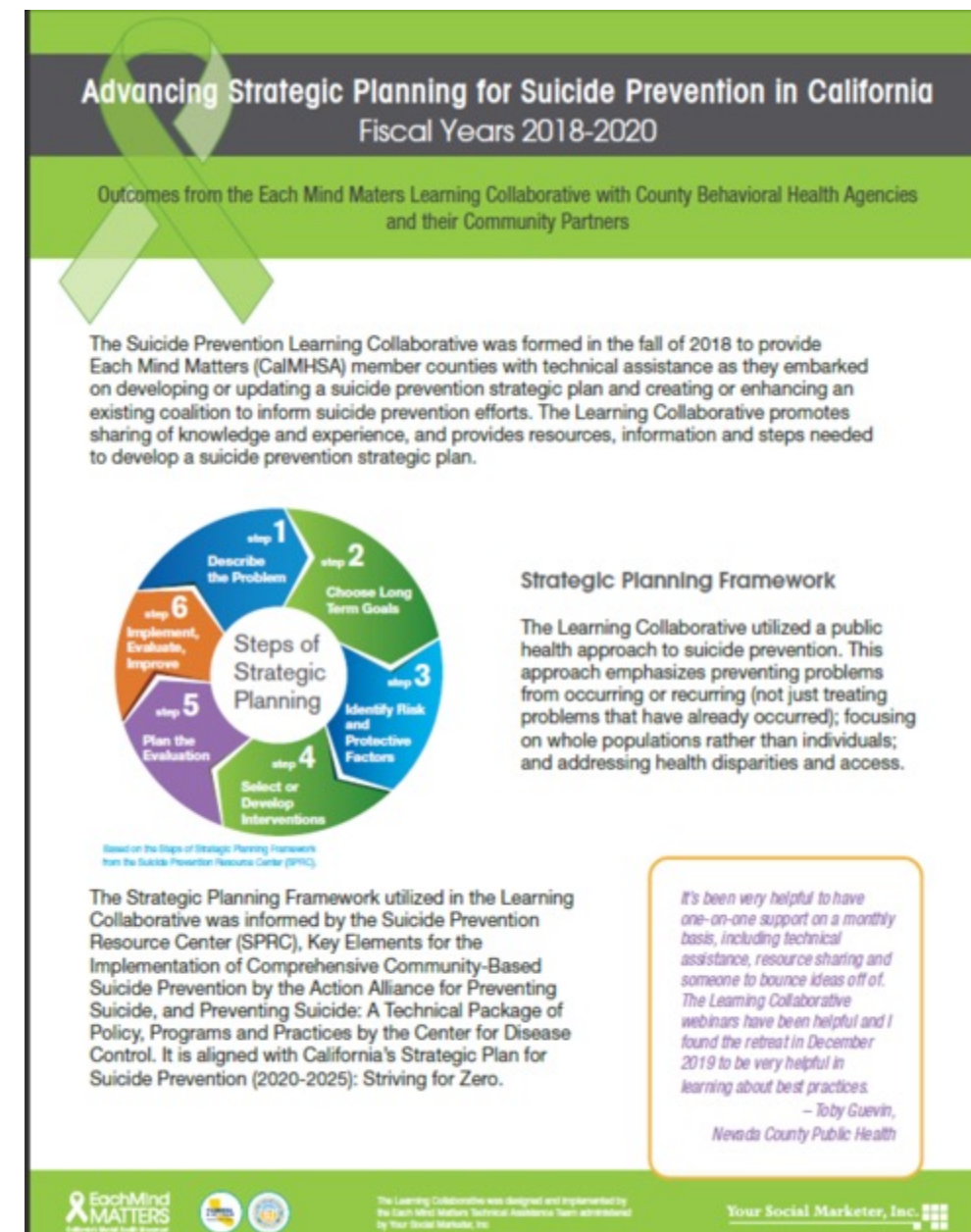
# Striving for Zero Learning Collaborative

Advance local strategic planning and implementation and alignment with strategic aims, goals and objectives set forth in California's Strategic Plan for Suicide Prevention



Builds on a previous Learning Collaborative offered by the California Mental Health Services Authority

Find the Plan here: <https://mhsoac.ca.gov/what-we-do/projects/suicide-prevention/final-report>





# Striving for Zero Rural County Collaborative

**Special focus and hands-on  
support for rural counties**

- ✓ Online modules
- ✓ Individualized technical assistance
- ✓ Learning exchange with other counties in shared interest areas

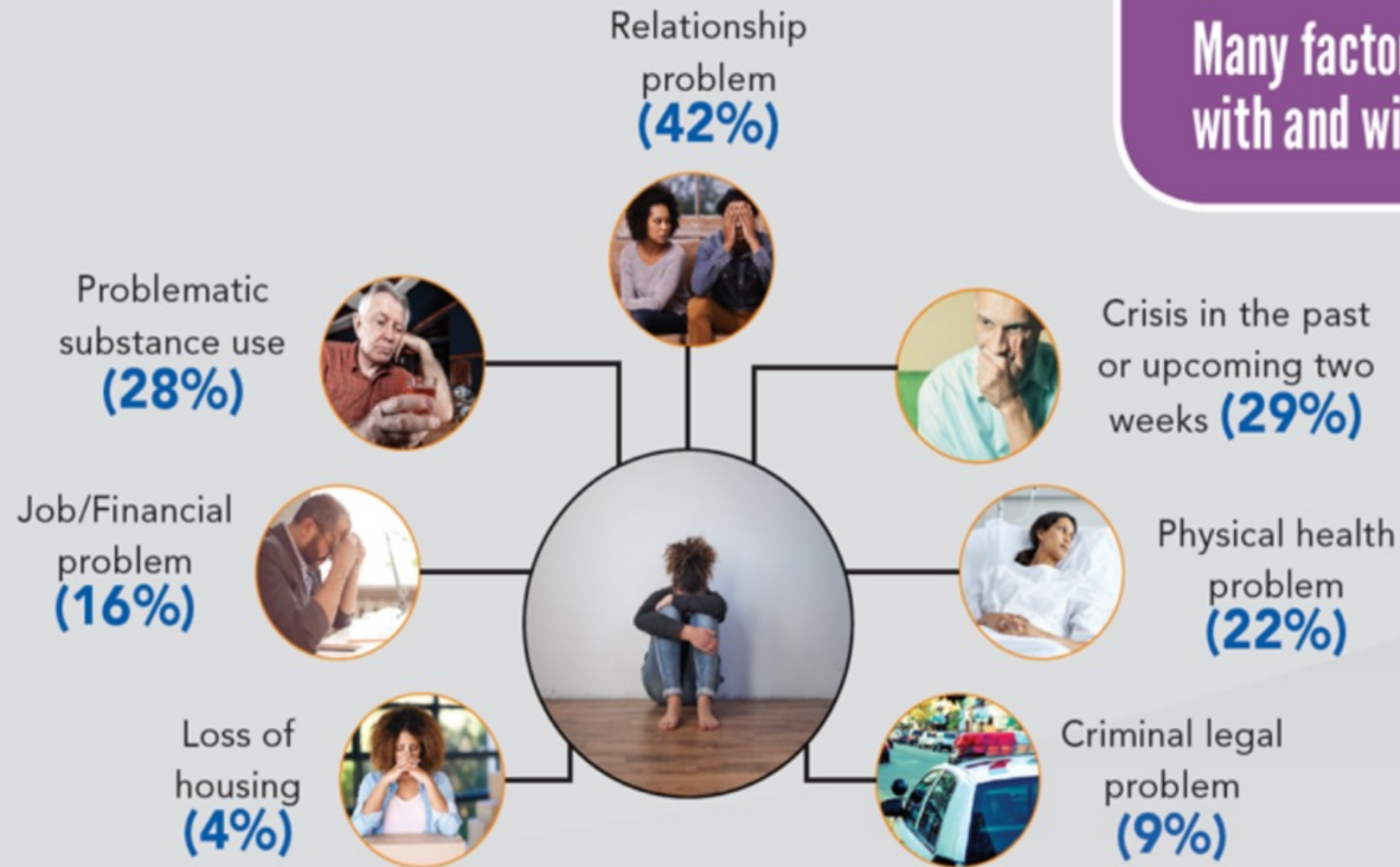


Webinar 1: April 7, 2021

<https://attendee.gotowebinar.com/recording/8177157450372649740>



# The problem is complex...



Many factors contribute to suicide among those with and without known mental health conditions.

Note: Persons who died by suicide may have had multiple circumstances. Data on mental health conditions and other factors are from coroner/medical examiner and law enforcement reports. It is possible that mental health conditions or other circumstances could have been present and not diagnosed, known, or reported.

SOURCE: CDC's National Violent Death Reporting System, data from 27 states participating in 2015.

# ...we can't do it alone!

**Implementing a Comprehensive Approach to Suicide Prevention** will be most effective, particularly in rural areas where services may not be available or are difficult to access.

A comprehensive approach acknowledges the social and environmental determinants of health that impact health and well-being, such as income and poverty, availability of green space, access to healthcare services, and housing affordability.

Suicide prevention programs addressing root causes may include interventions like economic development, open outdoor spaces, access to mental healthcare, housing stabilization policies, reducing provider shortages, and addressing social-emotional learning and parenting and family relationships.



# Coordinated Community Engagement



- A process by which community members and organizations come together with a mission to make a change to benefit their community.
- It inspires true ownership of the problems and the solutions; the more people who “own” your community engagement process, the more successful, and long-standing the overall change will be.
- Coordinated community engagement is an excellent way to drive permanent change or impact in a collaborative and bottom-up way.





What works in rural  
communities?



# COMMUNITY CARE COALITION

*Coalición de Cuidado Comunitario*



## Community Care Coalition

@asktularecountycoc · Nonprofit Organization

[Send Message](#)

[Home](#) [About](#) [Photos](#) [Videos](#) [More](#) ▾

[Liked](#)



### About

[See All](#)

50+ Tulare county partners Focused on coordinated service delivery efforts to identify and meet the diverse needs of our resilient communities.

609 people like this including 38 of your friends



679 people follow this



Create Post



Photo/Video



Check in



Tag Friends

### PINNED POST



Community Care Coalition

September 16 at 9:45 AM ·

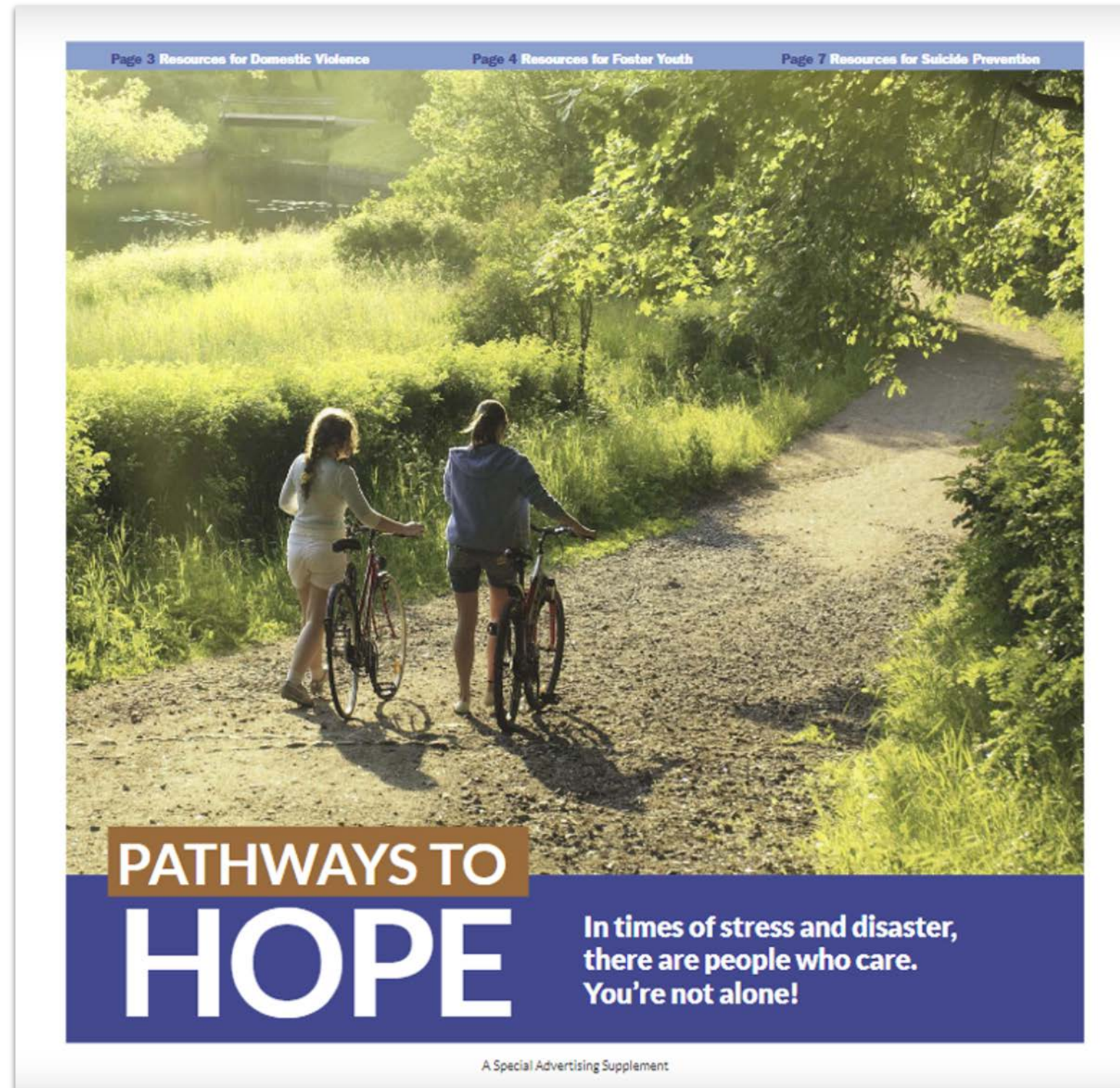


DONATIONS needed! Instructions below.

Town Halls

Website

Publication






Ready for some fun?



# TRIVIA PARTY

Non-Traditional Partners	Engage!	Barriers & Obstacles	Common Ground	Communicate	More Partners
\$200	\$200	\$200	\$200	\$200	\$200
\$400	\$400	\$400	\$400	\$400	\$400
\$600	\$600	\$600	\$600	\$600	\$600
\$800	\$800	\$800	\$800	\$800	\$800
\$1000	\$1000	\$1000	\$1000	\$1000	\$1000



Let's hear from  
you!

How are you  
moving  
forward with  
suicide  
prevention  
efforts amidst  
COVID-19, wild  
fires and more?



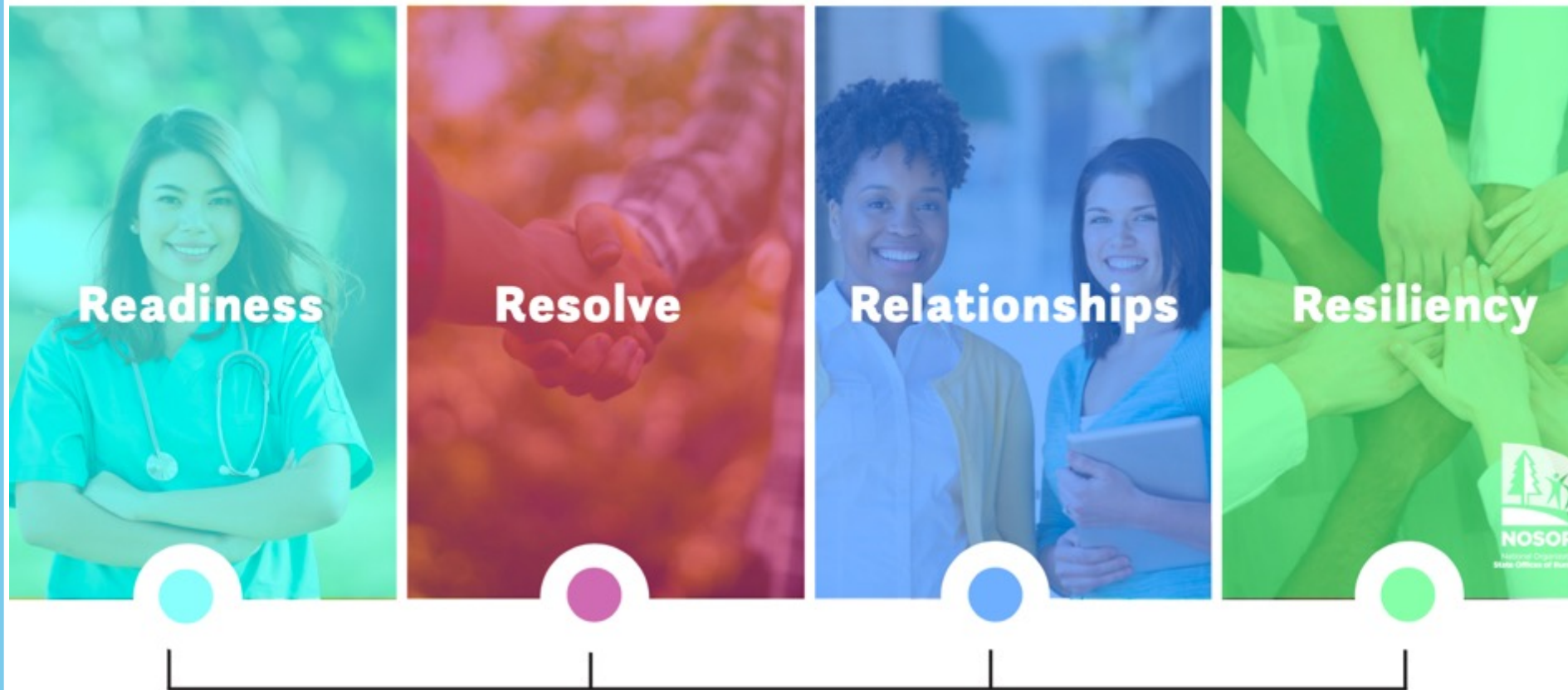




Other Questions?



What's Next?



# Celebrating the Power of Rural Movement!





# Striving for Zero Rural County Collaborative Meeting #2

**March 16, 2022, 10AM-11:30AM**

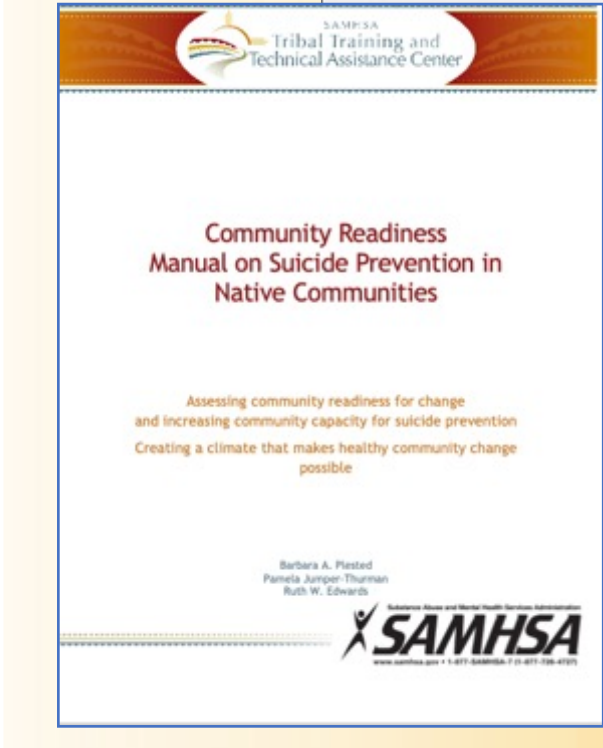
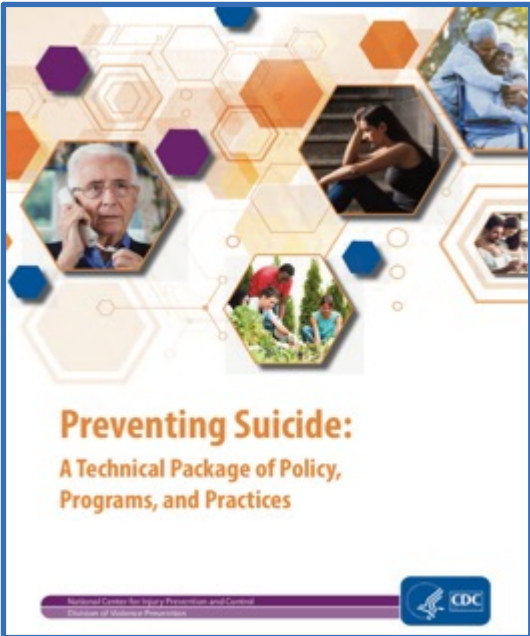
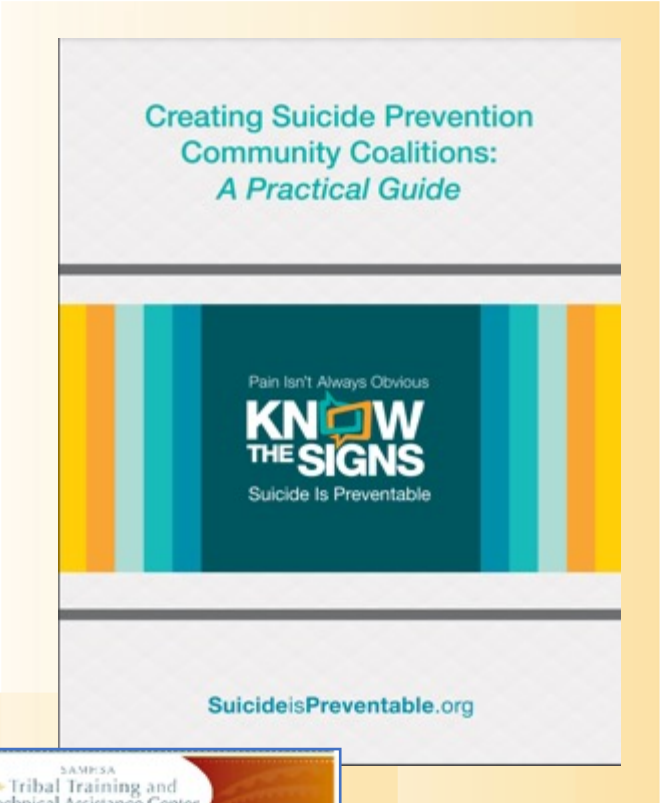
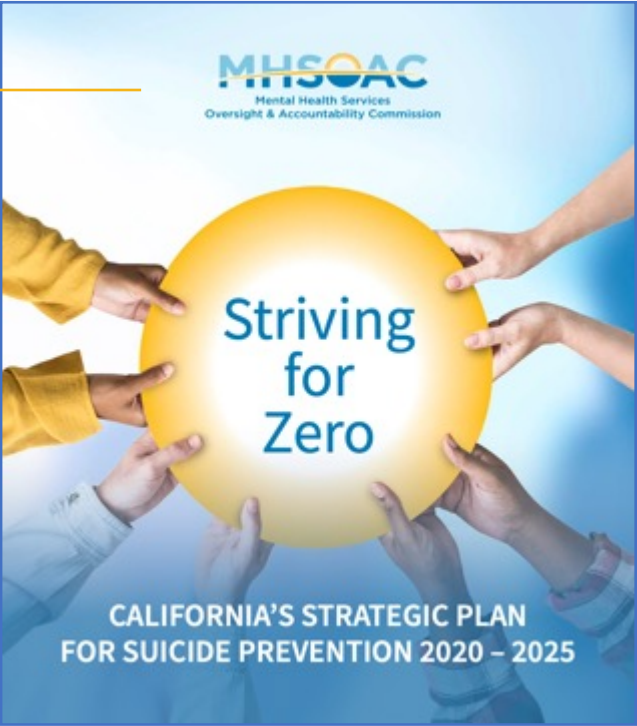
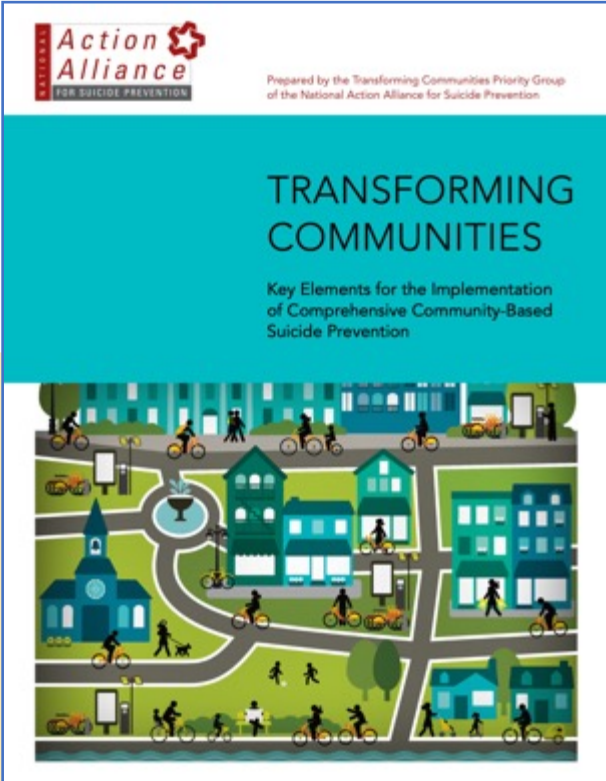
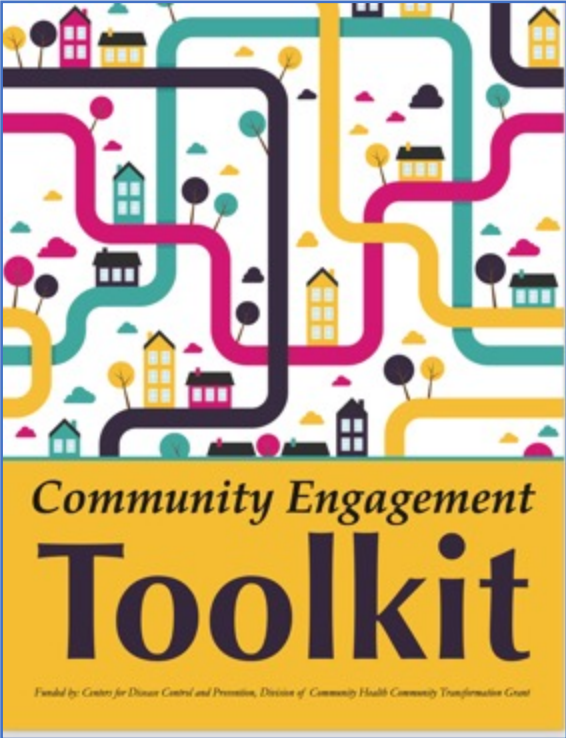
<https://zoom.us/meeting/register/tJApduGgrjktGdQVbA6pbwZykSJcFEaZBrNQ>

# Striving for Zero Strategic Planning Collaborative Online Module #3

**Wednesday, October 20th 10AM - 12PM**

<https://us06web.zoom.us/meeting/register/tJYkdOqqqToqHdM2KiLHbKYeVO38Y9p-fgOn>.

# Guiding Resources



# Thank you for your time

For more information please contact: [jsandra@suicideispreventable.org](mailto:jsandra@suicideispreventable.org)

Support for people at risk for suicide or those supporting people at risk is available by calling the **National Suicide Prevention Lifeline** 1-800-273-TALK (8255)

Apoyo y ayuda para personas a riesgo de suicidarse o para las personas que los apoyan está disponible llamando al **National Suicide Prevention Lifeline** 1-888-682-9454