

STRIVING FOR ZERO EXCELLENCE AWARDS

Striving
for
Zero

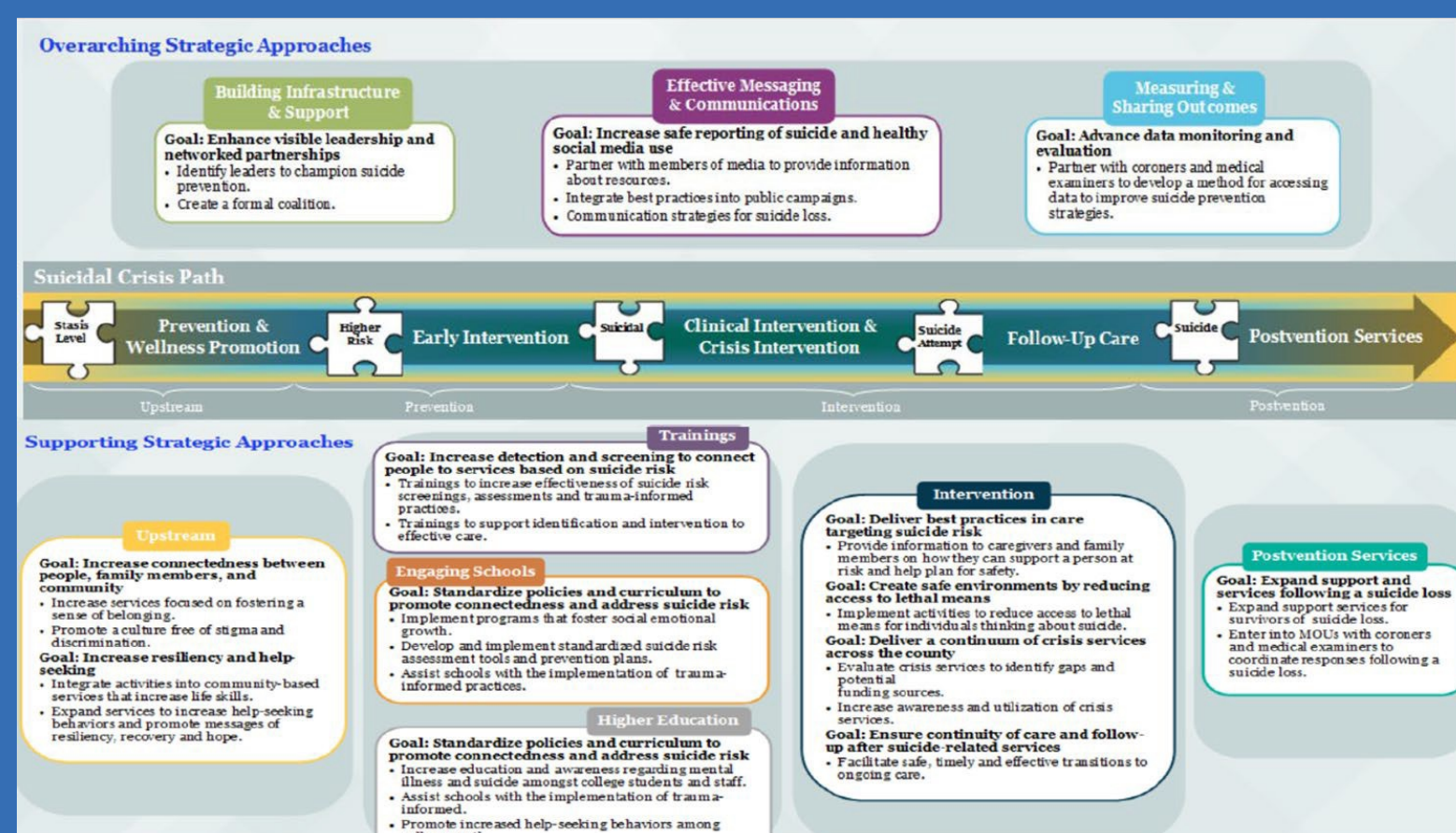
SUSTAINABLE PRACTICES

Suicide Prevention Coalition Infrastructure

Riverside County:

Riverside University Health System – Behavioral Health & Public Health (RUHS)

The Suicide Prevention Coalition was developed with sustainability at its foundation with funding from the Mental Health Services Act, Prevention and Early Intervention through Riverside University Health System - Behavioral Health. This funding supports one full-time Suicide Prevention Coordinator to assist with the coalition's day-to-day operations, funding for countywide events, and subcommittee initiatives. RUHS serves as the backbone of the coalition with several staff assigned to support our 8 subcommittees as part of their job duties. The Suicide Prevention Coalition also brings together multi-disciplinary partners to work towards addressing root causes of suicide. We are currently in the process of formalizing these partnerships through Memorandums of Understanding with local organizations to help transition the coalition to a more community-driven effort over the next 5 years.



Building Hope and Resiliency

A Collaborative Approach to Suicide Prevention in Riverside County

One-page summary of our county's strategic plan for suicide prevention titled, building hope & resiliency.

Vision Statement

Working collectively in Riverside County to eliminate suicide deaths and suicide attempts and increase resources and supports.

Data Overview

- Riverside County has experienced sustained population growth and is estimated to reach 2,686,242 residents by 2025.
- 30% Increase in suicide deaths between 2007 and 2017 in Riverside County.
- 2007 to 2017: 2,586 people died by suicide in Riverside County.
- Hispanic is the largest growing population in Riverside County, but data reveals Caucasians represent 65%-75% of suicide deaths.
- Adults aged 26-59 accounted for over half of the suicide deaths.
- Males accounted for more than two-thirds of the suicide deaths.
- 19% Increase in suicide attempts resulting in an emergency room visit and hospitalizations from 2006 to 2014 in Riverside County.
- Transition Age Youth (TAY) aged 15-19 accounted for 25% suicide attempts and TAY aged 20-24 accounted for 17%.
- Females more often attempt suicide than males, reporting 59% of suicide attempts.

Building Hope and Resiliency

A Collaborative Approach to Suicide Prevention in Riverside County

Www.rivcospc.org

This strategic plan was developed to coincide with California's Strategic Plan for Suicide Prevention 2010-2020: Striving for Zero. Please refer to the full state plan at: <http://bit.ly/strivingforzero>.

Riverside University Health System Behavioral Health



SCAN ME TO READ RIVERSIDE COUNTY'S ENTIRE STRATEGIC PLAN, BUILDING HOPE & RESILIENCY!